

# SOUTHERN RAILWAY STATIONS

## PART 2 SER LINES

LENS OF SUTTON ASSOCIATION  
List 15 (Issue2 Dec 2009)



**Shalford c1920 (20275)**

# LENS OF SUTTON ASSOCIATION

## SOUTHERN RAILWAY STATIONS

### PART 2 SER LINES

**(Including the Kent & East Sussex Railway, SR built stations in the Thanet area and other SECR and SR built stations sited on ex SER lines, eg Eltham Park, Falconwood, Albany Park)**

The order of entries is:

Negative number, location, date (if known), description or direction the view was taken in (eg Dartford indicates the view was taken looking towards Dartford), indication of whether the photograph is a copy – if nothing is stated then it is an original negative.

We are pleased to include photographs from the Denis Cullum Collection; these are prefixed C.

20159	Abbey Wood	1905	Street Scene	COPY
C1435	Abbey Wood	16/08/52	View looking West from footbridge	
21669	Abbey Wood	1950s/60s	Dartford	
21659	Abbey Wood	1950s/60s	frontage	
33557	Addiscombe	unknown date	Frontage	COPY
33558	Addiscombe	unknown date	Frontage	
33560	Addiscombe	unknown date	Frontage	COPY Smiths Bros.
33561	Addiscombe	unknown date	London	COPY
33559	Addiscombe	unknown date	Frontage	COPY
21278	Addiscombe	1950s/60s	canopy details	
21280	Addiscombe	1950s/60s	canopy details	
21275	Addiscombe	1950s/60s	concourse	
21279	Addiscombe	1950s/60s	concourse	
21274	Addiscombe	1950s/60s	Elmers End	
21281	Addiscombe	1950s/60s	Elmers End	
21276	Addiscombe	1950s/60s	name board	
21277	Addiscombe	1950s/60s	name board	
20090	Adisham	1900	Dover	COPY
20089	Adisham	1900	Faversham	COPY
20091	Adisham	1905	Faversham	"COPY C.B. Meakins, Adisham"
20092	Adisham	1905	Faversham	COPY
20101	Adisham	1910	Dover	COPY
20100	Adisham	1910	Faversham	COPY
C4855	Adisham	17/05/79	Station buildings from up platform	
C4854	Adisham	17/05/79	View of station from footbridge, looking South East	
C4857	Adisham	17/05/79	View of up platform from the down side, country end	
21461	Adisham	1950s/60s	Dover	
21473	Adisham	1950s/60s	Dover	
21466	Adisham	1950s/60s	Faversham	
21490	Albany Park	1950s/60s	Dartford	
64072	Aldershot Junction	1930s?	View along track showing junction between SER and LSWR Aldershot Town line.	
	Signal box in background			
33563	Allhallows	1932	Buffers	
33564	Allhallows	1932	Frontage	COPY
33562	Allhallows	1932	Gravesend	
33566	Allhallows	1935	Buffers	
33565	Allhallows	1955	Buffers	
C1895	Allhallows	24/10/53	View towards buffers	

21017	Allhallows	1950s/60s	Buffers	
21024	Allhallows	1950s/60s	Buffers	
21026	Allhallows	1950s/60s	Buffers	
21022	Allhallows	1950s/60s	details	
21023	Allhallows	1950s/60s	details	
21027	Allhallows	1950s/60s	details	
21016	Allhallows	1950s/60s	Gravesend	
21020	Allhallows	1950s/60s	Gravesend	
21025	Allhallows	1950s/60s	Gravesend	
20318	Appledore	1910	View of main station buildings looking to Hastings	Copy
20281	Appledore	1930	Hastings	
20297	Appledore	1950	Ashford	
20296	Appledore	1950	Hastings	
20517	Appledore	1950	Hastings	
20320	Appledore	1955	Ashford	
C5017	Appledore	30/09/81	View of station buildings, level crossing, signal box and gate house from public house	
C5018	Appledore	30/09/81	View of station buildings and signal box from public house	
C5019	Appledore	30/09/81	View of station from the level crossing ,showing gates	
21287	Appledore	1950s/60s	Ashford	
21289	Appledore	1950s/60s	Hastings	
C4653	Appledore, Kenardington Level Crossing	10/10/73	View from South side (down ) side road	
C4669	Appledore, Kenardington Level Crossing	04/12/73	View from down (South) side	
C4668	Appledore, Kenardington Level Crossing	04/12/73	View from up (North) side	
C4652	Appledore, Warehorne Level Crossing	10/10/73	View from south side (down side) road	
20437	Ash	1930	Guildford	COPY
20438	Ash	1930	Guildford	COPY
20475	Ash	1930	View of up and down awnings with loco shed in background; looking to Guildford	
20440	Ash	1935	Guildford	
33567	Ash	1955	Guildford	
C4041	Ash	02/02/66	View of level crossing and Ash Crossing box from Guildford platform	
C4039	Ash	02/02/66	"View of station and level crossing from new signal box, (Ash Crossing)"	
C4040	Ash	02/02/66	View of station from Guildford platform	
C4043	Ash	02/02/66	View of station from station signal box steps	
C4042	Ash	02/02/66	View of station signal box from Guildford platform	
C4038	Ash	02/02/66	View South from new signal box (Ash Crossing)	
C4961	Ash	09/02/81	"View of station from down platform, country end"	
C1228	Ash Green Halt	19/01/52	View of station looking West	
33572	Ashford	1890	View of sidings taken from Ashford Works with station in the background	COPY
33347	Ashford	1891	Overall view of station and goods yard looking to Tonbridge	COPY THS. No 9B.
33570	Ashford	1910	Dover "COPY Cooper, Maidstone"	
33569	Ashford	1910	Tonbridge	COPY
33571	Ashford	1910	Tonbridge	COPY
33575	Ashford	1920	Dover	COPY
33574	Ashford	1930	Dover. Signals.	COPY
33573	Ashford	1930	Towards Loco Works	COPY S13746.
21770	Ashford	1950s/60s	Dover	
21775	Ashford	1950s/60s	Dover	
21787	Ashford	1950s/60s	Dover	
21789	Ashford	1950s/60s	Dover	
21788	Ashford	1950s/60s	Tonbridge	
21831	Ashford	c1960	view of Ashford 'D' signal box across track	
21845	Ashford	c1970	view of signal box across track	
C4647	Ashford, Ruckinge Level Crossing	10/10/73	View from crossing towards Appledore	
C4648	Ashford, Ruckinge Level Crossing	10/10/73	View from crossing towards Ashford	
C4645	Ashford, Ruckinge Level Crossing	10/10/73	View from up side road	
C4649	Ashford, Ruckinge Level Crossing	10/10/73	View of crossing from down side road	
C4646	Ashford, Ruckinge Level Crossing	10/10/73	View of Crossing Keeper's cottage	
20067	Aylesford	1910	Maidstone	COPY
20068	Aylesford	1930	Maidstone	COPY
C4783	Aylesford	28/09/77	"View of station, signal box and level crossing from footbridge"	
21690	Aylesford	1950s/60s	frontage	
21681	Aylesford	1950s/60s	Strood	
21682	Aylesford	1950s/60s	Strood	
21700	Aylesford	1950s/60s	Strood	

33331	Barham	1930	Canterbury	
21485	Barnehurst	1950s/60s	Dartford	
20604	Battle	1910	Overall view of station from overbridge looking to Tonbridge	COPY 330
C2277	Battle	25/09/54	General view from road bridge looking North	
c2273	Battle	25/09/54	View of down platform from up platform	
c2274	Battle	25/09/54	View of up side buildings from approach road	
c2275	Battle	25/09/54	View of up side platform from footbridge	
C4660	Battle	25/10/73	View North from station footbridge	
21356	Battle	1950s/60s	Hastings	
21349	Battle	1950s/60s	View of down platform looking towards Hastings from end of up platform;	
			footbridge in view	
C4659	Battle Road level crossing	25/10/73	As for Neg C4658 but from the up line side (country side)	
C4658	Battle Road level crossing	25/10/73	"View of auto half barriers and crossing cottage, from the up side."	
C4928	Battle, Marley Lane Crossing	09/05/80	Level crossing and signal box from up side approach	
C4740	Battle, Riverhall Level Crossing	09/12/74	view of level crossing from the down side	
C4739	Battle, Riverhall Level Crossing	09/12/74	View of level crossing from the up side	
21693	Beltring Crossing	1950s/60s	Paddock Wood	
21679	Beltring Crossing	1950s/60s	signal box	
20061	Beltring Halt	1935	Maidstone	
20070	Beltring Halt	1945	Maidstone	
33576	Beluncle	1930	Allhallows	
C1141	Beluncle	20/10/51	View of halt from East	
21010	Beluncle	1950s/60s	Allhallows	
21014	Beluncle	1950s/60s	Gravesend	
20155	Belvedere	1910	Dartford	COPY
C1436	Belvedere	16/08/52	View looking West	
21635	Belvedere	1950s/60s	Dartford	
21636	Belvedere	1950s/60s	Frontage	
21665	Belvedere	1950s/60s	London Bridge	
21815	Belvedere, Ballast Wharf Level Crossing	c20's	view along Road showing crossing and Signal Box	
			copy	
C4770	Betchworth	23/09/75	View of station buildings and level crossing from the up side	
20429	Betchworth	1930	Redhill	
33577	Betchworth	1930	Reigate	
20451	Betchworth	1950	Redhill	
20482	Betchworth	1950	Redhill	
C1016	Betchworth	16/06/51	View of station	
C4769	Betchworth	23/09/75	View of down side station buildings from road	
C4768	Betchworth	23/09/75	View of level crossing from South (down) side	
C5077	Betchworth	26/09/82	View of station and level crossing with unit L575 on 10-51 am Tonbridge to Reading train	
			(11-33 am Redhill)	
C4977	Bettshanger	14/04/81	View of signal box from South end	
C4704	Bettshanger	30/04/74	View of signal box	
C5087	Bexhill Central	06/10/82	View East from road overbridge	
C5088	Bexhill Central	06/10/82	View of station buildings from road approach (another view)	
C5086	Bexhill Central	08/10/82	View of station buildings from road approach	
33580	Bexhill West	1910	Buffers	COPY J.V. No 48074.
33578	Bexhill West	1915	View under canopy looking towards concourse; trains in platforms either side	C.
33579	Bexhill West	1950	Buffers	
C2419	Bexhill West	02/03/55	Light engine approaching	
C2421	Bexhill West	02/03/55	View North from buffer stops	
C2420	Bexhill West	02/03/55	View North from buffers (spare platform)	
C2422	Bexhill West	02/03/55	View North from platform end	
21031	Bexhill West	1950s/60s	Buffers	
21032	Bexhill West	1950s/60s	Buffers	
21034	Bexhill West	1950s/60s	Buffers	
21036	Bexhill West	1950s/60s	Buffers	
21030	Bexhill West	1950s/60s	Crowhurst	
21033	Bexhill West	1950s/60s	Crowhurst	
21035	Bexhill West	1950s/60s	details	
20461	Bexley	1900	Yard scene with F Class Loco and fruit vans and horse drawn carts	Copy
20414	Bexley	1905	London	Copy
20417	Bexley	1905	London	COPY E.Winter. Bexley.
20460	Bexley	1910	Dartford	"COPY WH Smith, S5740."
20462	Bexley	1910	London	COPY FK No143.
20489	Bexley	1910	London	COPY FK No 142.
21488	Bexley	1950s/60s	Dartford	

21497	Bexley	1950s/60s	Lewisham	
20416	Bexleyheath	1905	Dartford	Copy
20272	Bexleyheath	1910	Dartford	COPY E K No 349.
21650	Bexleyheath	1950s/60s	London Bridge	
C1905	Biddenden, KESR	22/11/53	View of station buildings	
C1906	Biddenden, KESR	22/11/53	View along railway at Level Crossing between, Dashmonden and Washenden	
C1907	Biddenden, KESR	22/11/53	View along road, at level crossing, (as for 1906)	
21126	Bingham Road	1950s/60s	Frontage	
21135	Bingham Road	1950s/60s	Frontage	
21121	Bingham Road	1950s/60s	Sanderstead	
21127	Bingham Road	1950s/60s	Selsdon	
21136	Bingham Road	1950s/60s	Woodside	
33581	Bishopsbourne	1930	Canterbury	
20260	Blackheath	1910	Frontage and street scene	C. S.Phillips. Catford 771
20253	Blackheath	1912	Charlton	Copy
21480	Blackheath	1950s/60s	bay platform	
21481	Blackheath	1950s/60s	bay platform	
21484	Blackheath	1950s/60s	Dartford	
21493	Blackheath	1950s/60s	Frontage	
20423	Blackwater	1890	Reading	Copy
20469	Blackwater	1905	Guildford	COPY 'Tonbridge'
20470	Blackwater	1915	Overall view of station looking to Guildford; lime washed SECR cattle van in dock	Copy WHA No348.
20424	Blackwater	1920	Guildford	COPY No A596.
20422	Blackwater	1930	Guildford	
33586	Blackwater	1955	Ash	
C1301	Blackwater	12/04/52	View of station from road bridge (A30)	
C1302	Blackwater	12/04/52	View of station from under road bridge (A30)	
21872	Blackwater	late 50's	view of signal box across track	
33587	Blean & Tyler Hill	1900	Whitstable	Copy
C1960	Bodiam, KESR	02/01/54	"General view from the West ,from home signal"	
C1961	Bodiam, KESR	02/01/54	View of station platform the West	
C1962	Bodiam, KESR	02/01/54	"View of station buildings, platform side"	
C1963	Bodiam, KESR	02/01/54	"View of station buildings, road side"	
C1964	Bodiam, KESR	02/01/54	Aerial view from signal post	
20613	Bo-Peep Junction	1892	View of lines diverging from the junction looking to Tonbridge; West St Leonards station in the background	COPY 'Tonbridge' No 18B
C2425	Bopeep Junction	02/03/55	Eastbound goods train approaching	
C2424	Bopeep Junction	02/03/55	View East from road overbridge (LBSC side)	
64071	Bopeep Junction	1930s?	View along SER line to junction and signal box looking to Bopeep tunnel	
21822	Bourne Tunnel	1930's	Facing Canterbury.	Elham Valley Line
20266	Boxhill (Deepdene)	1910	Platform Scene	C
20269	Boxhill (Deepdene)	1910	Redhill	COPY No 3474.
20268	Boxhill (Deepdene)	1910	Staff Group	Copy
20255	Boxhill (Deepdene)	1920	Frontage	Copy
33590	Brasted	1930	Westerham	
33340	Brasted	1935	Westerham	
33589	Brasted	1935	Westerham	
21194	Brasted	1950s/60s	Awnings	
21199	Brasted	1950s/60s	Westerham	
21200	Brasted	1950s/60s	Westerham	
21204	Brasted	1950s/60s	Westerham	
64064	Bricklayers Arms	MPD	c1961	View of BR re-roofed 'Old Shed' with rebuilt WC 34011 and a class 33 visible
64065	Bricklayers Arms	MPD	Pre 1909	View of 'Old Shed' with SECR liveried locos visible; Ex SER class A SECR 36 prominent
33591	Bridge	1930	Overall view of station from platform ends looking to Canterbury	
20073	Bromley North	1910	Buffers	Copy WH Smith S5992
20077	Bromley North	1910	View of main station building looking towards the end of the branch	Copy
20075	Bromley North	1921	View of turntable and water tower with platform in the background	Copy
20074	Bromley North	1935	New Frontage	Copy
C3379	Bromley North	09/05/59	View North showing new signal box	
21453	Bromley North	1950s/60s	concourse	
21452	Bromley North	1950s/60s	Frontage	
21451	Bromley North	1950s/60s	Grove Park	
21475	Bromley North	1950s/60s	nameboard	
33594	Brookland	1910	Appledore	Copy
33599	Brookland	1910	Appledore	Copy

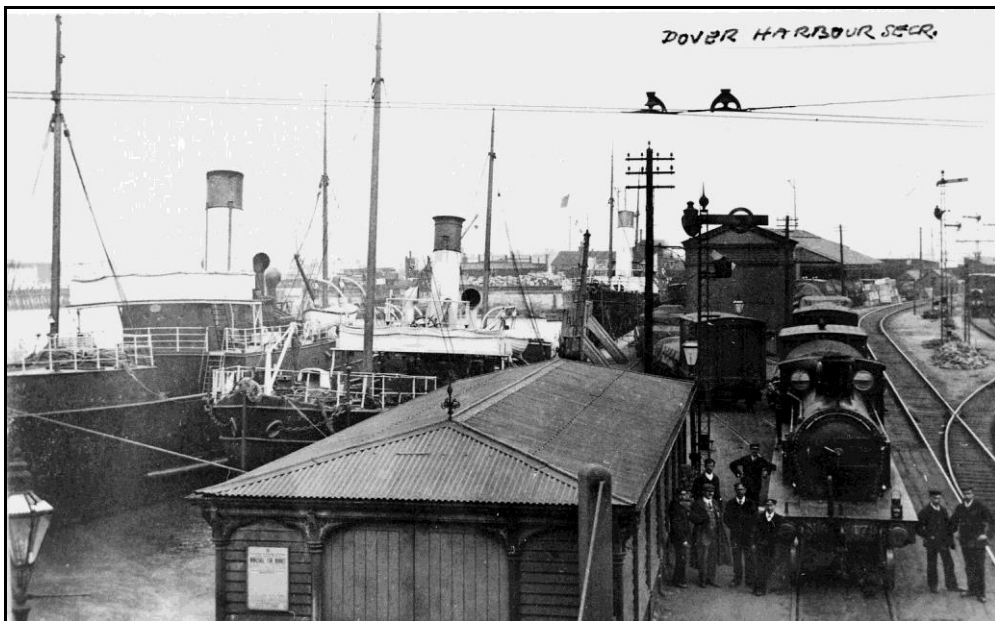
33595	Brookland	1910	Frontage	Copy	
33596	Brookland	1910	Staff Group	Copy	
33600	Brookland	1930	Appledore	Copy	
33598	Brookland	1930	Dungeness		
33597	Brookland	1950	Appledore		
21175	Brookland	1950s/60s	Appledore		
21176	Brookland	1950s/60s	Appledore		
21177	Brookland	1950s/60s	Appledore		
21178	Brookland	1950s/60s	New Romney		
C2754	Buckland Crossing	03/12/55	View showing gate box		
C4771	Buckland Siding, Reigate	23/09/75	View of siding connection and signal box		
20402	Cannon Street	1895	Q Class Loco	Copy	
20397	Cannon Street	1905	London Bridge	Copy	
20408	Cannon Street	1905	Panorama with loco No 485	Copy	
20396	Cannon Street	1905	River Bridge from River	Copy No 22.	
20407	Cannon Street	1920	Frontage	Copy	
20389	Cannon Street	1955	Buffers		
C2974	Cannon Street	09/04/57	View from platforms 5/6 after signal box fire, showing temporary signal box in freight brake van		
C3178	Cannon Street	02/04/58	View of station from South end of Southwark Bridge		
21712	Cannon Street	1950s/60s	internal view		
21714	Cannon Street	1950s/60s	internal view		
21742	Cannon Street	1950s/60s	internal view		
21744	Cannon Street	1950s/60s	London Bridge		
21757	Cannon Street	1950s/60s	panorama		
21750	Cannon Street	1950s/60s	panorama of the river end		
21740	Cannon Street	1950s/60s	view looking towards the buffers		
21745	Cannon Street	1950s/60s	view looking towards the buffers		
21749	Cannon Street	1950s/60s	view looking towards the buffers		
33601	Canterbury South	1930	Canterbury		
20286	Canterbury West	1930	Ashford	COPY	
20094	Canterbury West	1930	Dover		
20289	Canterbury West	1945	Minster	COPY	
20285	Canterbury West	1960	Frontage		
C1554	Canterbury West	17/01/53	View of signal box from West		
C1553	Canterbury West	17/01/53	View of station from overhead signal box		
C1609	Canterbury West	28/02/53	"View East from London end ,up side."		
C1617	Canterbury West	28/02/53	View of down platform from up platform		
C1611	Canterbury West	28/02/53	View of Whitstable Harbour line from signal box		
C4500	Canterbury West	19/07/71	View east from signal box		
C4501	Canterbury West	19/07/71	"View of goods yard from signal box, (Site of the Canterbury & Whitstable station)"		
C4496	Canterbury West	19/07/71	View of signal box from goods yard		
C4499	Canterbury West	19/07/71	"View of station from overhead signal box, looking West"		
21514	Canterbury West	1950s/60s	Ashford		
21512	Canterbury West	1950s/60s	Ramsgate		
21873	Canterbury West	c1970's	view of signal box across track		
C4498	Canterbury West, St Dunstons	Level Crossing	19/07/71	View of gate box and lifting barriers	
20231	Caterham	1905	Overall view of station from platform end looking back to buffers. SER class F in platform with 4 wheelers	COPY	
20233	Caterham	1905	View looking away from end of platform looking to Purley	COPY	
20232	Caterham	1905	View of main platform looking away from buffers	COPY	WH Smith S3499.
20245	Caterham	1910	Frontage	COPY	
20240	Caterham	1920	Frontage	COPY	
20243	Caterham	1920	Panorama"COPY R.Bunce, Caterham, No 40."		
21629	Caterham	1950s/60s	panorama		
21633	Caterham	1950s/60s	Purley		
21632	Caterham	1950s/60s	view of platforms		
21628	Caterham	1950s/60s	view towards buffers		
21630	Caterham	1950s/60s	view towards buffers		
21631	Caterham	1950s/60s	view towards buffers		
21869	Caterham	c1960's	Signal box viewed from platform across track. (SR built Box)		
20609	Catford Bridge	1905	Frontage and approach; Corral & Co Coal Merchant's Office prominent		COPY
20610	Catford Bridge	1905	Overall view of station looking to London	COPY	
20548	Catford Bridge	1930	Station Approach	COPY	RTM No 239
21416	Catford Bridge	1950s/60s	Addiscombe		

21409	Catford Bridge	1950s/60s	Lewisham	
20304	Charing	1905	Ashford	COPY
20511	Charing	1930	Ashford	
C4904	Charing	14/12/79	View in up direction through footbridge	
C4901	Charing	14/12/79	View of down side station buildings from approach road	
C4902	Charing	14/12/79	View of down side station buildings from up side road bridge	
C4903	Charing	14/12/79	View of station from road overbridge	
C4900	Charing	14/12/79	View of station from the down platform showing footbridge	
C5029	Charing	01/12/81	View towards London from down platform	
20405	Charing Cross	1890	E Class Loco	COPY
20623	Charing Cross	1905	Buffers	COPY
20519	Charing Cross	1910	Frontage	COPY
20507	Charing Cross	1930	Buffers	COPY
20510	Charing Cross	1930	Buffers	
21746	Charing Cross	1950s/60s	internal view	
20371	Charing Cross	1955	Waterloo	
C4931	Charing Cross Bridge	12/05/80	Reconstruction works, from Shell walkway	
20180	Charlton	1910	London	COPY
21646	Charlton	1950s/60s	Dartford	
21645	Charlton	1950s/60s	footbridge	
20176	Charlton Junction	1900	London	
20170	Charlton Junction	1905	Dartford	COPY
C5074	Charlton Lane Crossing	12/08/82	View of level crossing and gate box from footbridge	
C5073	Charlton Lane Crossing	12/08/82	"View of level crossing, footbridge and West end of Charlton tunnel"	
21871	Charlton Lane Crossing	c1960	"Signal box viewed from footbridge, level crossing gates across railway"	
20284	Chartham	1905	Ashford	COPY FF & Co No 53459
21504	Chartham	1950s/60s	Ashford	
21501	Chartham	1950s/60s	Canterbury	
21513	Chartham	1950s/60s	Canterbury	
20372	Chelsfield	1880	London	COPY 'Tonbridge' 1B.
20359	Chelsfield	1940	London	Copy
C2099	Chelsfield	08/05/54	View of station from occupation overbridge looking North	
C2098	Chelsfield	08/05/54	View of station from road overbridge looking South	
21738	Chelsfield	1950s/60s	Tonbridge	
33602	Cheriton Halt	1915	Bridge Renewal	Copy
33603	Cheriton Halt	1920	Ashford	Copy
21196	Chevening	1950s/60s	Dunton Green	
21198	Chevening	1950s/60s	Westerham	
21201	Chevening	1950s/60s	Westerham	
21210	Chevening	1950s/60s	Westerham	
20288	Chilham	1905	View of down platform with train arriving (SER class B on bogie coaches); looking to Ashford	
20291	Chilham	1935	Overall view of station looking to Canterbury	
21509	Chilham	1950s/60s	Ramsgate	
21511	Chilham	1950s/60s	Ramsgate	
20455	Chilworth	1930	Frontage	COPY S&W Series No 1400
20447	Chilworth	1930	Guildford	
20485	Chilworth	1930	Guildford	
20476	Chilworth	1930	Overall of station looking to Guildford Copy Dann Series	
C4365	Chilworth	05/10/57	View from footbridge towards Shalford	
C4364	Chilworth	05/10/67	View from Redhill end of down platform	
C4366	Chilworth	05/10/67	View of level crossing from Guildford road side	
C4367	Chilworth	05/10/67	View of signal box	
21866	Chilworth	late 50's	view of signal box across track	
20185	Chipstead	1900	Frontage	COPY
20187	Chipstead	1900	View of up platform looking to Purley COPY	
20186	Chipstead	1910	Overall view of station with staff posing; looking to Purley COPY	
20184	Chipstead	1910	Purley	
20188	Chipstead	1930	Purley	
20220	Chipstead	1935	Purley	COPY Hughes Series.
20221	Chipstead	1935	Purley	
21598	Chipstead	1950s/60s	Purley	
21601	Chipstead	1950s/60s	Purley	
20363	Chislehurst	1905	Tonbridge	COPY
20399	Chislehurst	1910	Frontage	COPY
20373	Chislehurst	1910	Orpington	COPY
20365	Chislehurst	1920	London	COPY

20403	Chislehurst	1920	Platform Scene	COPY P&S Series.	
20374	Chislehurst	1935	Tonbridge		
20386	Chislehurst	1960	London		
C2442	Chislehurst	19/03/55	View South from London end of island platform		
21717	Chislehurst	1950s/60s	Tonbridge		
C4691	Chislet	08/03/74	View of signal box		
21208	Chislet Colliery Halt	1950s/60s	Dover		
21209	Chislet Colliery Halt	1950s/60s	Faversham		
C4690	Chislet Halt	08/03/74	View from the East		
C4689	Chislet Halt	08/03/74	View looking East from footbridge		
33608	Cliffe	1910	Gravesend	COPY No 613.	
33606	Cliffe	1920	Frontage	COPY	
33605	Cliffe	1920	Staff Group	COPY	
33607	Cliffe	1920	View of buildings, station masters house prominent looking to Gravesend		COPY E.
	Bentley, Cliffe.				
33604	Cliffe	1930	Allhallows		
C1082	Cliffe	25/08/51	View from the West		
C1085	Cliffe	25/08/51	View in down direction at MP 30 3/4		
21011	Cliffe	1950s/60s	Gravesend		
21861	Cliffe	c1970	view of signal box across track		
21870	Cliffe	c1970	view of signal box across track		
21000	Cliffe	1950s/60s	Allhallows		
33611	Coombe Lane	1902	Railmotor	COPY	
33610	Coombe Lane	1902	Train & Loco No 4A.	COPY	
33609	Coombe Lane	1910		COPY	
21116	Coombe Road	1950s/60s	Addiscombe		
21129	Coombe Road	1950s/60s	Awnings		
21130	Coombe Road	1950s/60s	Awnings		
21131	Coombe Road	1950s/60s	Awnings		
21123	Coombe Road	1950s/60s	Bridge		
21124	Coombe Road	1950s/60s	Sanderstead		
21134	Coombe Road	1950s/60s	Sanderstead		
21128	Coombe Road	1950s/60s	Selsdon		
21137	Coombe Road	1950s/60s	Woodside		
20143	Coulsdon	1910	Croydon	COPY W E Eade.	
20149	Coulsdon	1910	Redhill	COPY	
20147	Coulsdon	1920	Approach road and frontage	COPY	
20130	Coulsdon	1920	Frontage	COPY	
20142	Coulsdon	1920	Redhill	COPY	
33612	Coulsdon South	1930	London		
33613	Coulsdon South	1930	Redhill		
C1121	Cranbrook	29/09/51	View of station form South		
21147	Cranbrook	1950s/60s	Hawkhurst		
21153	Cranbrook	1950s/60s	Hawkhurst		
21159	Cranbrook	1950s/60s	Hawkhurst		
21163	Cranbrook	1950s/60s	Hawkhurst		
21148	Cranbrook	1950s/60s	Paddock Wood		
21160	Cranbrook	1950s/60s	Paddock Wood		
21161	Cranbrook	1950s/60s	Paddock Wood		
C1670	Crayford	18/04/53	View looking East		
21492	Crayford	1950s/60s	Lewisham		
21498	Crayford	1950s/60s	Lewisham		
21864	Crayford	late 50's	view of signal box across track		
20628	Crowhurst	1910	Frontage	COPY	
20556	Crowhurst	1930	Tonbridge		
20557	Crowhurst	1950	Hastings		
20547	Crowhurst	1950	Tonbridge		
20597	Crowhurst	Jun-24	Hastings	COPY	
C2282	Crowhurst	25/09/54	View North from South end of up platform		
C2283	Crowhurst	25/09/54	View South from South end of up platform		
C2280	Crowhurst	25/09/54	View South from station footbridge		
C2281	Crowhurst	25/09/54	View South showing station and footbridge		
C2408	Crowhurst	02/03/55	View North from signal box steps		
C2409	Crowhurst	02/03/55	View North from up branch siding		
C2992	Crowhurst	11/05/57	View from footbridge looking North		
C2993	Crowhurst	11/05/57	View from footbridge looking South		
C2994	Crowhurst	11/05/57	View from London end of down platform looking South		



C2995	Crowhurst	11/05/57	View of station buildings from approach road
21363	Crowhurst	1950s/60s	Hastings
21355	Crowhurst	1950s/60s	Panorama
21348	Crowhurst	1950s/60s	Tonbridge
21358	Crowhurst	1950s/60s	Tonbridge
21359	Crowhurst	1950s/60s	Tonbridge
21360	Crowhurst	1950s/60s	Tonbridge
21368	Crowhurst	1950s/60s	Tonbridge
C3001	Crowhurst Park Siding	11/05/57	View of siding from North
20444	Crowthorne	1930	Reading
C1307	Crowthorne	12/04/52	View of station from footbridge
C1306	Crowthorne	12/04/52	View of station from South
21868	Crowthorne	late 50's	view of signal box across track
20516	Crowthorne	1950	Guildford
20072	Cuxton	1920	Strood COPY F.E.Chalklen.
C1792	Cuxton	11/07/53	View looking West
C4732	Cuxton	17/10/74	View of level crossing and signal box from the down side
C4731	Cuxton	17/10/74	View of station looking North towards Strood from footbridge
21701	Cuxton	1950s/60s	frontage
21704	Cuxton	1950s/60s	Paddock Wood



**Dover Harbour c1910 (33625)**

20163	Dartford	1900	Frontage COPY
20161	Dartford	1910	Gravesend COPY EK 207.
20167	Dartford	1930	View off end of down platform looking towards London; LQ signal gantry prominent
20153	Dartford	1935	London COPY
20152	Dartford	1960	London
C1671	Dartford	18/04/53	View from footbridge looking East
C1672	Dartford	18/04/53	View looking East from No 1. Platform
C1673	Dartford	18/04/53	View looking East from No 1 platform, London end
C2742	Dartford	24/11/55	Looking West from London end of down platform
21637	Dartford	1950s/60s	Chatham
21639	Dartford	1950s/60s	London Bridge
21661	Dartford	1950s/60s	London Bridge
21667	Dartford	1950s/60s	London Bridge
20158	Dartford	1920	Street Scene Copy
20339	Deal	1910	Frontage COPY No 24003.
20334	Deal	1910	Minster Copy
20333	Deal	1930	Minster
33621	Deal	1950	Redhill
21316	Deal	1950s/60s	Minster
21326	Deal	1950s/60s	Minster

C1579	Deal Junction	08/02/53	View of signal box and up from Kearsney Loop home	
33622	Deepdene	1950	Redhill	
C1770	Deepdene	20/06/53	View West	
C4313	Deepdene	17/04/67	Up side station buildings	
C4309	Deepdene	17/04/67	View of station from East end	
21229	Denton Halt	1950s/60s	Hoo Junction	
21230	Denton Halt	1950s/60s	Hoo Junction	
C3294A	Deptford	23/08/58	View from country end of up platform (another view)	
C3293	Deptford	23/08/58	View East from London end of down platform	
C3294	Deptford	23/08/58	View West from country end of up platform	
20151	Deptford	1950s	London Bridge	
C4773	Doleham	15/03/76	View of halt from down side path	
C4774	Doleham	15/03/76	View of halt from overbridge	
C4775	Doleham	15/03/76	View of halt from the Rye side	
C4867	Doleham	31/07/79	"View from road overbridge, looking towards Rye."	
C4868	Doleham	31/07/79	View from road overbridge looking towards Hastings	
C5048	Doleham	01/04/82	View from Hastings end (single line)	
C5049	Doleham	01/04/82	View from road overbridge	
20299	Doleham Halt	1930	Hastings	
21308	Doleham Halt	1950s/60s	Rye	
21309	Doleham Halt	1950s/60s	Rye	
20270	Dorking	1910	Tonbridge	Copy
20430	Dorking	1914	Redhill	COPY Tigwell. Dorking No 9
20256	Dorking	1920	Frontage	Copy
20473	Dorking	1950	Overall view of station looking towards Guildford	Copy No N2301.
33623	Dorking	1950	Redhill	
21824	Dorking	c1905	view near Dorking of London Road, and adjacent LBSCR underbridge	copy
20082	Dover Harbour	1905	Landward	Copy
20081	Dover Harbour	1905	View of E No 504 leaving going past the Warden Hotel	Copy
33625	Dover Harbour	1910	View of Dover Harbour with ships tied up beside the tracks; Admiralty Pier in the background; SECR No 473 on goods	Copy
64069	Dover Harbour	c1930	View of N15 E764 leaving quayside with Pullmans	
20079	Dover Marine	1905	Seaward	COPY WH Smith S5228
20108	Dover Marine	1920	Platforms	COPY WH Smith S17476
20109	Dover Marine	1920	Seaward	Copy
33871	Dover Marine	1956	Exterior	
33861	Dover Marine	1956	Interior	
33862	Dover Marine	1956	Interior	
20078	Dover Marine	27/04/14	View of station under construction with steelwork part erected. Two SECR coaches in foreground; SECR 960 lav first and SEC 260 lav second.	Copy
21456	Dover Marine	1950s/60s	Internal view	
21457	Dover Marine	1950s/60s	Internal view	
21474	Dover Marine	1950s/60s	Internal view	
21859	Dover Marine	c1960	view of signal box across track	
33349	Dover Pier	1910	Landwards	COPY No 5332
33624	Dover Pier	1910	View of Admiralty Pier from landward end	COPY No 6737.
20332	Dumpton Park	1930	Ramsgate	Copy
33865	Dumpton Park	1956	Chatham	
33864	Dumpton Park	1956	Dover	
33626	Dungeness	1925	Seaward	Copy
33627	Dungeness	1930	Appledore	
33628	Dungeness	1930	Seaward	
33629	Dungeness	1930	Seaward	
33630	Dungeness	1930	Seaward	COPY A. E. Shaw.
33358	Dungeness	1930	Seawards	
21179	Dungeness	1950s/60s	Panorama	
20378	Dunton Green	1891	View from London end of platforms showing signal box and branch	COPY 'Tonbridge' 7.
20387	Dunton Green	1910	London	Copy
20390	Dunton Green	1910	Sevenoaks	Copy
33355	Dunton Green	1955	Westerham	
C655	Dunton Green	03/06/50	View of station from West, up boat train passing	
C2103	Dunton Green	08/05/54	View from country end looking North	
C2104	Dunton Green	08/05/54	View from London End looking North	
21731	Dunton Green	1950s/60s	footbridge	
21726	Dunton Green	1950s/60s	London Bridge	
21724	Dunton Green	1950s/60s	Tonbridge	
21727	Dunton Green	1950s/60s	view of Westerham branch platform	

20468	Earley	1900	Reading	Copy	
20477	Earley	1930	View of down platform and station building looking to Guildford		
20474	Earley	1950	Frontage		
20431	Earley	1950	Reading		
33631	Earley	1955	Ash		
C1076	East Farleigh	04/08/51	View of station from South		
C4915	East Farleigh	28/02/80	Footbridge,level crossing and station from down platform		
C4914	East Farleigh	28/02/80	Level crossing,signal box and up platform from footbridge		
21689	East Farleigh	1950s/60s	Paddock Wood		
21695	East Farleigh	1950s/60s	Paddock Wood		
21699	East Farleigh	1950s/60s	Paddock Wood		
21684	East Farleigh	1950s/60s	Strood		
C4373	East Shalford level crossing	05/10/67	View of level crossing from down side		
C4374	East Shalford level crossing	05/10/67	View of level crossing from Shalford side		
C4372	East Shalford level crossing	05/10/67	View of gate house from Chilworth end		
C4597	East Shalford level crossing	17/05/73	View of level crossing from North approach road		
C4595	East Shalford level crossing	17/05/73	View of level crossing from South approach road		
21552	Eden Park	1950s/60s	London Bridge		
21878	Eden Park	c1950's	View of SR Station Entrance		
20140	Edenbridge	1920	Frontage Copy		
20126	Edenbridge	1930	Redhill		
33636	Edenbridge	1950	Tonbridge		
20146	Edenbridge	1970	Redhill		
20125	Edenbridge	1975	Tonbridge		
C892	Edenbridge	21/01/51	View of station from East		
C1183	Edenbridge	22/12/51	View of station looking East, Down platform		
C1184	Edenbridge	22/12/51	View of station looking East, Up platform		
C5041	Edenbridge	24/02/82	Down platform from country end of up platform		
C5040	Edenbridge	24/02/82	Up platform from the London end of the down platform		
21827	Edenbridge	c1930's	view of LBSCR, Hurst Green -Tunbridge Wells line underbridge facing Redhill		
20141	Edenbridge	1920	Redhill Copy		
C1977	Edenbridge Tunnel (Little Browns Tunnel)	27/02/54	North portal of Edenbridge Tunnel (Little Browns Tunnel)		
showing SER crossing					
33365	Elham	1910	General View of platform ends with church in background Copy		
21212	Elham	1950s/60s	Canterbury		
20559	Elmers End	1920	London Copy Johns 7194		
C2288	Elmers End	02/10/54	View looking North from South end of up platform		
21413	Elmers End	1950s/60s	Addiscombe		
21414	Elmers End	1950s/60s	Footbridge		
21423	Elmers End	1950s/60s	Lewisham		
21424	Elmers End	1950s/60s	Lewisham		
20401	Elmstead Woods	1910	Frontage and approach road Copy		
20404	Elmstead Woods	1910	Overall view of station looking to London Copy No 39056.		
20419	Eltham & Mottingham	1910	Dartford Copy		
20413	Eltham & Mottingham	1910	London Copy		
20251	Eltham Park	1910	Dartford Copy		
20273	Eltham Park	1910	Dartford Copy		
20271	Eltham Park	1910	Frontage Copy WH Smith S11251.		
20261	Eltham Park	1912	As 'Shooters Hill'; overall view looking to Dartford Copy		
21240	Eltham Park	1950s/60s	Lewisham		
21241	Eltham Park	1950s/60s	Lewisham		
20274	Eltham Well Hall	1900	Dartford Copy		
20250	Eltham Well Hall	1910	Frontage Copy		
21482	Eltham Well Hall	1950s/60s	Dartford		
21486	Eltham Well Hall	1950s/60s	Lewisham		
21874	Eltham Well Hall	late 50's	view of signal box across track		
20168	Erith	1900	Overall view of station looking to London Copy		
20174	Erith	1900	View of yard and up platform looking to Dartford COPY H.Jecock, Erith		
20171	Erith	1910	London COPY M&W Series		
20175	Erith	1910	View of down platform and bay from overbridge; looking to London COPY		
20156	Erith	1910	View of down platform with coaches in bay and River Thames with sailing barge in tre background COPY EVB Series 100		
20162	Erith	1930	Panorama		
21754	Erith	1950s/60s	Gravesend		
21865	Erith	late 50's	view of signal box across track, towards Station		

21851	Erith, North End Sidings	c1960's	view of signal box across track	
20568	Etchingham	1910	Level Crossing	Copy
20552	Etchingham	1910	Tonbridge	Copy
20589	Etchingham	1930	Tonbridge	
20535	Etchingham	1950	Hastings	
C930	Etchingham	26/03/51	View of station from Robertsbridge end	
C929	Etchingham	26/03/51	View of station from Stonegate end	
C4930	Etchingham	09/05/80	Level crossing and signal box from up side road approach	
21339	Etchingham	1950s/60s	Hastings	
21353	Etchingham	1950s/60s	Tonbridge	
C907	Eythorne	03/03/51	View looking along derelict spur to Guilford Colliery	
C908	Eythorne	03/03/51	View looking towards Tilmanstone Colliery	
21483	Falconwood	1950s/60s	Lewisham	
20456	Farnborough North	1930	Guildford	
33637	Farnborough North	1950	Reading	
C985	Farnborough North	14/05/51	View of old spur (Sturt Lane to Farnborough North) from LSW end	
C986	Farnborough North	14/05/51	View of old spur (Sturt Lane to Farnborough North) from SER end.	
C1297	Farnborough North	12/04/52	View of station looking North	
C4194	Farnborough North	05/08/66	View South from country end of down platform	
21855	Farnborough North	c1960	view of signal box across track	
33638	Folkestone Central	1920	Frontage	Copy
33639	Folkestone Central	1930	Ashford	Copy
20585	Folkestone Central	1935	Dover	
21783	Folkestone Central	1950s/60s	Ashford	
21784	Folkestone Central	1950s/60s	Ashford	
21785	Folkestone Central	1950s/60s	Dover	
21786	Folkestone Central	1950s/60s	Dover	
33643	Folkestone Harbour	1900	Folkestone Junction	Copy
20324	Folkestone Harbour	1920	Folkestone Junction	Copy
33640	Folkestone Harbour	1920	Landward	Copy
33642	Folkestone Harbour	1935	Landward	
20504	Folkestone Harbour	1935	Seaward	
33641	Folkestone Harbour	1935	Seaward	
33644	Folkestone Harbour	1960	Folkestone Junction	
C4745	Folkestone Harbour	11/03/75	Signal box	
C4747	Folkestone Harbour	11/03/75	View North of level crossing,etc, from the up platform	
C4746	Folkestone Harbour	11/03/75	View of level crossing from the West	
21780	Folkestone Harbour	1950s/60s	Folkestone Junction	
21781	Folkestone Harbour	1950s/60s	panorama	
C4748	Folkestone Harbour, Folly Road	Level Crossing	11/03/75	View of level crossing from the footbridge
33657	Folkestone Harbour Bch	1960	Seaward	
33645	Folkestone Junction	1890	View along up platform looking to Dover	Copy THS.
20325	Folkestone Junction	1920	Dover	Copy
33646	Folkestone Junction	1960	Dover	
21213	Folkestone Junction	1950s/60s	Ashford	
21216	Folkestone Junction	1950s/60s	Ashford	
21214	Folkestone Junction	1950s/60s	Dover	
21215	Folkestone Junction	1950s/60s	Dover	
64074	Folkestone Junction	c1959	General view of shed with 4 ex SER R1 0-6-0Ts lined up outside, 31107 prominent; third rail electrification in place	
33647	Folkestone Warren	1905	Dover	Copy
33648	Folkestone Warren	1905	Dover	Copy
33649	Folkestone Warren	1905	General view looking to Dover	Copy
33650	Folkestone Warren	1920	Dover	Copy
33652	Folkestone Warren	1920	Dover	Copy
33653	Folkestone Warren	1920	Dover	Copy
33651	Folkestone Warren	1920	Folkestone	Copy
C858	Folkestone Warren	06/09/50	Up light engine from Capel Le Ferne	
C857	Folkestone Warren	06/09/50	Up ""Birkenhead"" from Capel Le Ferne	
C856	Folkestone Warren	06/09/50	Folkestone Warren, aerial view from Capel Le Ferne	
20607	Frant	1885	Tonbridge	Copy
20567	Frant	1900	View of down platform, signal box and main station building looking to Hastings	Copy
20532	Frant	1910	Hastings	Copy
20553	Frant	1910	Tonbridge	Copy
20590	Frant	1930	Hastings	

C2580	Frant	09/07/55	View looking South of down platform	
C2582	Frant	09/07/55	View South from down home signal	
21343	Frant	1950s/60s	Frontage	
21338	Frant	1950s/60s	Hastings	
21347	Frant	1950s/60s	Tonbridge	
21340	Frant	pregroup	View of down platform looking to Hastings	Copy
C1444	Frittenden Road, KESR	23/08/52	View of station looking North	



Grove Park c1910 (20379)

20145	Godstone	1930	Redhill	
20144	Godstone	1930	Tonbridge	
33658	Godstone	1960	Redhill	
33655	Godstone	1970	Redhill	
33656	Godstone	1970	Redhill	
33654	Godstone	1970	Tonbridge	
21856	Godstone	c1960	view of signal box across track	
20129	Godstone	1930	Road Scene	COPY Batchelder Bros, Croydon
21812	Gomershall Level Crossing	c1910	facing Guildford, gates across road	COPY V.Jelleys series
21811	Gomershall Level Crossing	c30's	facing Guildford, gates across Railway	
21813	Gomershall, Brook Level Crossing	c30's	facing Redhill, gates across Railway	
20480	Gomshall & Shere	1873	View of up platform and main station building looking to Guildford	COPY 'Tonbridge'
47B.				
20435	Gomshall & Shere	1910	Redhill	Copy
20487	Gomshall & Shere	1910	View of up platform and main station building looking to Redhill	Copy
20471	Gomshall & Shere	1920	View of up platform and main station building looking to Redhill	Copy
20265	Gomshall & Shere	1930	Tonbridge	
33660	Gomshall & Shere	1960	Dorking	
33659	Gomshall & Shere	1960	Guildford	
C1786	Gomshall & Shere	20/06/53	View of down platform looking East	
C4733	Gomshall & Shere	24/10/74	View of down platform and foot crossing from up platform	
C4734	Gomshall & Shere	24/10/74	View of up platform and signal box from down platform	
33662	Goudhurst	1930	Paddock Wood	COPY Valentines No 46476
33661	Goudhurst	1935	Hawkhurst	
C1118	Goudhurst	29/09/51	View of station from up home signal	
21145	Goudhurst	1950s/60s	Hawkhurst	
21155	Goudhurst	1950s/60s	Hawkhurst	
21157	Goudhurst	1950s/60s	Hawkhurst	
21146	Goudhurst	1950s/60s	Paddock Wood	
21152	Goudhurst	1950s/60s	Paddock Wood	
21167	Goudhurst	1950s/60s	Panorama	
C1886	Grain Crossing	24/10/53	View of new sea wall with gates for railway, built following Kent floods	
21858	Grain Crossing	late 50's	view of signal box across road and track	

33664	Grain Halt	1920	View of Level Crossing, signal box and halt in the background	Copy
33663	Grain Halt	1935	Allhallows	COPY S.Wright, Grain
C1888	Grain Halt	24/10/53	View from new platforms showing new signal Box	
C1887	Grain Halt	24/10/53	View South of disused platform	
C1889	Grain Halt	24/10/53	View South showing new platforms and signal box	
21028	Grain Halt	1950s/60s	Gravesend	
21002	Grain Halt	1950s/60s	Allhallows	
21005	Grain Halt	1950s/60s	Allhallows	
21007	Grain Halt	1950s/60s	Allhallows	
21003	Grain Halt	1950s/60s	Gravesend	
21012	Grain Halt	1950s/60s	Gravesend	
20169	Gravesend Central	1900	London	Copy
20179	Gravesend Central	1910	Dartford	COPY WH Smith S5822.
21663	Gravesend Central	1950s/60s	Chatham	
21656	Gravesend Central	1950s/60s	London Bridge	
21660	Gravesend Central	1950s/60s	London Bridge	
21677	Gravesend Central	1950s/60s	London Bridge	
21809	Gravesend Central	1950s/60s	London Bridge	
21184	Greatstone-on-Sea	1950s/60s	Appledore	
20164	Greenhithe	1910	View of down platform and awning looking to Dartford	COPY WH Smith S7877
21648	Greenhithe	1950s/60s	Dartford	
21662	Greenhithe	1950s/60s	Frontage	
21666	Greenhithe	1950s/60s	Frontage	
21849	Greenhithe	late 50's	view of signal box across track	
20177	Greenwich	1910	Frontage	COPY P&S, No 2714
21217	Grove Ferry	1950s/60s	Minster	
21219	Grove Ferry	1950s/60s	Footbridge	
21220	Grove Ferry	1950s/60s	Frontage	
21218	Grove Ferry	1950s/60s	Signal Box	
21857	Grove Ferry	c1960	view of signal box and ticket office from rear	
33673	Grove Junction	1926	Tunbridge Wells Central	
C3217	Grove Junction	10/05/58	East end of Grove Tunnel	
C3214	Grove Junction	10/05/58	South end of Grove Hill Tunnel	
20382	Grove Park	1888	London	COPY 'Tonbridge' 7B
20364	Grove Park	1900	Tonbridge	COPY OD Series No 2604.
20383	Grove Park	1905	London	Copy
20395	Grove Park	1905	London	Copy
20398	Grove Park	1910	Frontage	Copy
20380	Grove Park	1910	Frontage with Military Funeral	Copy
20393	Grove Park	1910	London	Copy
20381	Grove Park	1910	Orpington	Copy
20379	Grove Park	1910	View of Bromley branch platform from overbridge looking to Orpington	Copy
20394	Grove Park	1920	London	Copy
21720	Grove Park	1950s/60s	London Bridge	
21728	Grove Park	1950s/60s	London Bridge	
21880	Grove Park	c1900-05	View facing Tonbridge, showing signals and trackwork etc	COPY
21816	Grove Park	c40's	Station Nameboard, 'Grove Park, Junction for the Bromley Branch'	
20065	Halling	1925	Strood	COPY A.Mills, Halling
21707	Halling	1950s/60s	frontage	
21705	Halling	1950s/60s	Strood	
21708	Halling	1950s/60s	Strood	
20279	Ham Street	1900	Ashford	Copy
20278	Ham Street	1905	Hastings	Copy
C5044	Ham Street	18/03/82	Down platform from country end of up platform	
C5047	Ham Street	18/03/82	General view from down platform	
C5045	Ham Street	18/03/82	Station buildings from approach road	
C5046	Ham Street	18/03/82	Station buildings from down platform	
21282	Ham Street	1950s/60s	Ashford	
21286	Ham Street	1950s/60s	Ashford	
21283	Ham Street	1950s/60s	Buildings	
21284	Ham Street	1950s/60s	Rye	
21854	Ham Street	late 50's	view of signal box across track	
C4651	Ham Street & Orlestone	10/10/73	View of down platform from the up side platform	
C4650	Ham Street & Orlestone	10/10/73	View of up side platform buildings from the down platform	
C5084	Harbledown	29/09/82	View East of SER line from LCDR bridge	

20566	Hastings	1893	Ashford	COPY 'Tonbridge' 6B.	
20280	Hastings	1905	St Leonards	Copy	
20545	Hastings	1910	Ashford	Copy	
20621	Hastings	1910	View looking down on station throat looking to Ashford	COPY No 1636.	
20542	Hastings	1930	Frontage		
20612	Hastings	1930	View of station being rebuilt from London end showing yard and goods shed, looking to		
	Ashford		Copy		
C2736	Hastings	12/11/55	Looking East from country end		
C2735	Hastings	12/11/55	Looking West from London end		
C2737	Hastings	12/11/55	View looking West from Country end		
21366	Hastings	1950s/60s	Footbridge		
21365	Hastings	1950s/60s	Rye		
21830	Hastings	1960's	view of signal box along embankment		
33677	Hawkhurst	1955	Paddock Wood		
C1123	Hawkhurst	29/09/51	View of station from North		
21165	Hawkhurst	1950s/60s	Buffers		
21168	Hawkhurst	1950s/60s	Buildings		
21169	Hawkhurst	1950s/60s	Buildings		
21151	Hawkhurst	1950s/60s	Frontage		
21171	Hawkhurst	1950s/60s	Goods shed		
21144	Hawkhurst	1950s/60s	Paddock Wood		
21149	Hawkhurst	1950s/60s	Paddock Wood		
21164	Hawkhurst	1950s/60s	Paddock Wood		
21170	Hawkhurst	1950s/60s	Panorama		
21154	Hawkhurst	1950s/60s	Signal Box		
21162	Hawkhurst	1950s/60s	Signal Box/water tower		
20001	Hayes	1905	View looking to buffers, M class loco prominent	COPY	
21553	Hayes	1950s/60s	concourse		
21550	Hayes	1950s/60s	London Bridge		
21551	Hayes	1950s/60s	view looking back to buffers		
20000	Hayes	c1947/8	view of platform from London end of the station; Ex LBSC trailer set in bay in Bulleid		
			livery		
33678	Headcorn	1875	View of down platform looking to Tonbridge	COPY THS No 17B.	
C1440	Headcorn	23/08/52	View of station from FB looking East		
C1441	Headcorn, KESR	23/08/52	View of down platform and buildings		
C1442	Headcorn, KESR	23/08/52	View of branch platform looking West		
20599	High Brooms	1893	Named as 'Southborough'; overall view of station looking to Tonbridge	COPY	
			'Tonbridge' No 13.		
20587	High Brooms	1930	View looking down on station towards Tunbridge Wells. Goods yard with wagons very prominent in foreground; gasworks in the background		
C3208	High Brooms	10/05/58	View looking North from down platform, country end		
C4924	High Brooms	25/04/80	As Neg C4923, but another view		
C4925	High Brooms	25/04/80	View of station from country end of down platform		
C4923	High Brooms	25/04/80	View of up side station buildings from approach road		
21337	High Brooms	1950s/60s	Tonbridge		
21344	High Brooms	1950s/60s	Tonbridge		
C1909	High Halden Road, KESR	22/11/53	View of layout looking towards Tenterden		
C1910	High Halden Road, KESR	22/11/53	View of station from the road		
C1087	High Halstow	25/08/51	View of halt		
21019	High Halstow	1950s/60s	Allhallows		
20178	Higham	1880	Overall view of station taken from the running lines; looking to Strood	Copy	
20166	Higham	1910	Gravesend	COPY No 130303.	
C2739	Higham	19/11/55	View North West from country end of down platform		
C2740	Higham	19/11/55	View South East from footbridge		
C2738	Higham	19/11/55	View South East from London end of up platform		
21674	Higham	1950s/60s	Strood		
64057	Higham	pre-group	Overall view of platform looking to London	COPY	
20385	Hildenborough	1875	Overall view of station looking to Sevenoaks; platelayers on line	COPY 'Tonbridge' 4.	
21763	Hildenborough	1950s/60s	London Bridge		
21734	Hildenborough	1950s/60s	Tonbridge		
21735	Hildenborough	1950s/60s	Tonbridge		
20409	Hither Green	1910	Frontage and approach road with horse drawn cabs	Copy	
20367	Hither Green	1920	Frontage	Copy	
20368	Hither Green	1920	Frontage	Copy	
21721	Hither Green	1950s/60s	footbridge		
21718	Hither Green	1950s/60s	London Bridge		
21723	Hither Green	1950s/60s	London Bridge		

21715	Hither Green	1950s/60s	Tonbridge	
21759	Hither Green	1950s/60s	Tonbridge	
64090	Hither Green MPD	1950s/60s	General view of shed and yard with locos in steam	
64091	Hither Green MPD	c1960/1	General view of shed and yard with coaling stage to right; steam locos and type 2 diesels on shed	
C1101	Horsmonden	15/09/51	View of station from North	
C1113	Horsmonden	29/09/51	View of station from South	
21158	Horsmonden	1950s/60s	Hawkhurst	
21166	Horsmonden	1950s/60s	Hawkhurst	
21150	Horsmonden	1950s/60s	Paddock Wood	
21156	Horsmonden	1950s/60s	Paddock Wood	
21172	Horsmonden	1950s/60s	Paddock Wood	
C1100	Horsmonden Tunnel	15/09/51	Tunnel 1472	
33333	Hythe	1930	Sandgate	
C854	Hythe	04/09/50	View of station looking towards Sanding Junction	
21223	Hythe	1950s/60s	buffers	
21222	Hythe	1950s/60s	Derelict	
C1958	Junction Road, KESR	02/01/54	View of sidings from the West, (general)	
C1959	Junction Road, KESR	02/01/54	View of platform from L.C.	
20228	Kenley	1899	View of up platform looking to Purley	COPY
20241	Kenley	1905	Caterham	COPY
20229	Kenley	1905	Overall view of station looking to Tattenham Corner; main station building prominent	COPY
20242	Kenley	1905	Panorama	COPY No 3269.
20246	Kenley	1910	Caterham	COPY P.G.Weston. No 4192
20247	Kenley	1910	Frontage	COPY
20230	Kenley	1930	Tattenham Corner	COPY
21620	Kenley	1950s/60s	Caterham	
21616	Kenley	1950s/60s	Purley	
21627	Kenley	1950s/60s	Purley	
21487	Kidbrooke	1950s/60s	Dartford	
C1871	Kingsley Halt	26/09/53	View looking North of Binstead Road	L.C.
20192	Kingswood	1900	Exterior of station building and yard looking to Croydon	Copy
20207	Kingswood	1910	Panorama	Copy
20189	Kingswood	1910	Panorama of station buildings taken from hillside	Copy
20190	Kingswood	1910	Purley	COPY G. F. Roberts.
20191	Kingswood	1910	Purley	Copy
20222	Kingswood	1910	Tattenham Corner	COPY Gates Series No 2470
20208	Kingswood	1925	Purley	Copy
20217	Kingswood	1930	Platform Shelter	Copy
20212	Kingswood	1960	Tattenham Corner	
21602	Kingswood	1950s/60s	frontage	
21596	Kingswood	1950s/60s	Purley	
21600	Kingswood	1950s/60s	Purley	
21599	Kingswood	1950s/60s	signal box	
20351	Knockholt	1880	Named 'Halstead'; overall view looking to Tonbridge	COPY 'Tonbridge' 53B.
20342	Knockholt	1900	Named 'Halstead Knockholt'; view of down platform looking to London with SER class F entering station.	Copy
20343	Knockholt	1905	London	Copy
20376	Knockholt	1920	London	COPY No 39.
C2102	Knockholt	08/05/54	View of station buildings from public road entrance	
C2100	Knockholt	08/05/54	View South from London end	
21732	Knockholt	1950s/60s	London Bridge	
21729	Knockholt	1950s/60s	Tonbridge	
21417	Ladywell	1950s/60s	Frontage	
21415	Ladywell	1950s/60s	Lewisham	
21421	Ladywell	1950s/60s	Lewisham	
20458	Lee	1930	Dartford	Copy
21496	Lee	1950s/60s	Dartford	
21494	Lee	1950s/60s	Frontage	
20124	Leigh Halt	1920	Tonbridge	Copy



20138	Leigh Halt	1920	View of up platform with train running in (hailed by SER class F 4-4-0) looking to	
	Tonbridge	Copy		
20127	Leigh Halt	1930	Tonbridge	Copy
20128	Leigh Halt	1930	Tonbridge	Copy
33682	Leigh Halt	1955	Redhill	
33681	Leigh Halt	1955	Tonbridge	
20252	Lewisham	1920	London	Copy
21410	Lewisham	1950s/60s	Hither Green	
21411	Lewisham	1950s/60s	Hither Green	
21825	Lewisham	c1905	view from Railway bridge near Lewisham showing Courthill Road & railway	copy
20259	Lewisham Junction	1905	London	Copy
20263	Lewisham Junction	1905	London	Copy
C1978	Little Browns Tunnel		27/02/54	View along SER of bridge in Little Browns Tunnel
33359	Littlestone on Sea	1920	Overall view of station looking to Appledore with sheep in pens in foreground	COPY No
51620.				
21761	London Bridge (Low Level)	1950s/60s	Charing Cross	
21756	London Bridge (Low Level)	1950s/60s	New Cross	
21760	London Bridge (Low Level)	1950s/60s	New Cross	
20377	London Bridge Eastern	1900	Frontage with Horse Buses	Copy
20355	London Bridge Eastern	1926	Lewisham	Copy
20375	London Bridge Eastern	1930	Charing Cross	
20503	London Bridge Eastern	1945	Charing Cross	
C1542	London Bridge Eastern	03/12/52	View from South Footbridge looking South	
C1541	London Bridge Eastern	03/12/52	View from No 4 platform looking North	
C1540	London Bridge Eastern	03/12/52	View looking North from South end of 3/4 platforms, widening works	
C1621	London Bridge Eastern	06/03/53	View of platform 4 looking North	
C1620	London Bridge Eastern	06/03/53	View of platforms 4 & 6 from South footbridge	
C1691	London Bridge Eastern	21/04/53	View of No 4 platform with new edge	
C2166	London Bridge Eastern	30/07/54	View South of new awning extension, platform 4	
C2881	London Bridge Eastern	10/07/56	Platform 6, after straightening	
C4847	London Bridge Eastern	28/02/79	As fo Neg C4845/6, but another view	
C4846	London Bridge Eastern	28/02/79	As for Neg C4845, but another view	
C4845	London Bridge Eastern	28/02/79	SER offices, from Tooley Street	
21733	London Bridge Eastern	1950s/60s	Cannon Street	
21755	London Bridge Eastern	1950s/60s	Charing Cross	
21752	London Bridge Eastern	1950s/60s	Orpington	
21716	London Bridge Eastern	1950s/60s	view towards buffers	
C1999	Lower Addiscombe Road bridge		06/03/54	View towards East Croydon station from. (as for neg C1990)
20611	Lower Sydenham	1910	?	COPY
20601	Lower Sydenham	1910	Frontage	COPY
21419	Lower Sydenham	1950s/60s	Addiscombe	
21852	Lower Sydenham	c1960	view of signal box across track	
33700	Lydd	1909	Appledore	COPY
33704	Lydd	1909	Appledore	COPY
33705	Lydd	1909	Appledore	COPY
33713	Lydd	1909	Army Personnel	COPY
33702	Lydd	1910	Dungeness	COPY
33703	Lydd	1910	Dungeness	COPY
33697	Lydd	1910	Overall view of station looking to Appledore	COPY A.E.Shaw No 136.
33695	Lydd	1911	War Dept 0-4-2T 'Nicholson' with LSWR 1 plank open 9318 with gun and limber being unloaded	Copy
33711	Lydd	1912	Same staff group as 33710 but only posed on platform	COPY
33708	Lydd	1912	Sidings	COPY
33710	Lydd	1912	Staff group posed on up platform and sitting on SER class O 0-6-0 x72	COPY
33707	Lydd	1912	W.D.Guns	COPY
33709	Lydd	1912	W.D.Guns	COPY
33712	Lydd	1912	W.D.Guns	COPY
33342	Lydd	1920	Overall view of station looking to Appledore; goods train passing passenger train	
			COPY	F Bertram
33696	Lydd	1930	Appledore	
33701	Lydd	1930	Appledore	
33699	Lydd	1930	Dungeness	Copy
33706	Lydd	1930	Dungeness	
33698	Lydd	?	Army Personnel	Copy
33692	Lydd	?	New Romney	Copy
33694	Lydd	?	View of down platform with soldiers and 4 wheel ex LCDR stock	Copy
33693	Lydd	?	War Dept Train	Copy

21186	Lydd Town	1950s/60s	Dungeness	
21187	Lydd Town	1950s/60s	Dungeness	
21181	Lydd-on-Sea	1950s/60s	Appledore	
21173	Lydd-on-Sea	1950s/60s	New Romney	
C1202	Lyghe Halt	05/01/52	View of halt looking East	
C1203	Lyghe Halt	05/01/52	View West of bridge no 81 over the Medway, old no 1182 near halt	
33345	Lyminge	1910	General View	Copy
33714	Lyminge	1910	General View	Copy
33715	Lyminge	1910	Staff Group	Copy
33716	Lyminge	1930	Canterbury	
21683	Maidstone Barracks	1950s/60s	Paddock Wood	
21691	Maidstone Barracks	1950s/60s	Paddock Wood	
21694	Maidstone Barracks	1950s/60s	Strood	
20057	Maidstone West	1960	Paddock Wood	
C1068	Maidstone West	04/08/51	View of station from footbridge showing remains of luggage bridge	
C1069	Maidstone West	04/08/51	View of station from Tonbridge end	
33717	Marden	1880	View of up platform shelter and signal box looking to Ashford	COPY THS No 20B.
20326	Marden	1910	Ashford	Copy
33718	Marden	1920	Tonbridge	COPY A.Dovey.
33719	Marden	1930	Ashford	
20513	Marden	1960	Tonbridge	
20600	Marden	1960	View of up platform and signal box looking to Tonbridge; post electrification	
C4879	Marden	31/08/79	Up platform looking East from station footbridge	
C4878	Marden	31/08/79	View of up side station buildings from approach road	
21823	Marden Park Viaduct	c1905-10	copy	
33866	Margate	1960	Platforms	
33867	Margate	1960	Platforms	
21319	Margate	1950s/60s	Awnings	
21332	Margate	1950s/60s	Awnings	
21330	Margate	1950s/60s	Faversham	
21331	Margate	1950s/60s	Faversham	
21336	Margate	1950s/60s	Panorama	
21335	Margate	1950s/60s	Platform 5	
33337	Margate Sands	1915		
C832	Margate Sands	22/08/50	View of station site from near Margate signal box	
20344	Martin Mill	1910	View of platform ends looking to Minster with SER Q 0-4-4T on passenger train entering	
			COPY No 7721.	
20335	Martin Mill	1930	Minster	
21325	Martin Mill	1950s/60s	Dover	
20154	Maze Hill	1900	View of up platform	Copy
21640	Maze Hill	1950s/60s	Dartford	
21653	Maze Hill	1950s/60s	Dartford	
21664	Maze Hill	1950s/60s	footbridge	
21634	Maze Hill	1950s/60s	London Bridge	
21652	Maze Hill	1950s/60s	panorama	
21883	Maze Hill	c1950	Front view of carriage sheds facing buffers	
21884	Maze Hill	c1950	Rear exterior view of carriage sheds showing sidings and Coaching Stock	
C2652	Meeth	05/08/55	View of halt	
20135	Merstham	1905	Frontage of Old Station	Copy
20136	Merstham	1910	Frontage of New Station	Copy
20132	Merstham	1920	Croydon	Copy
20134	Merstham	1920	Frontage	Copy
20133	Merstham	1920	Overall view of station looking to Redhill	Copy
33721	Merstham	1960	View	
33722	Merstham	1960	View	
33723	Merstham	1960	View	
33724	Merstham	1960	View	
33725	Merstham	1960	View	
33720	Merstham	1960		
21814	Merstham	24.8.06	scene near Merstham showing cutting & Lime works Branch	copy
33726	Middle Stoke	1930	View of entire platform broadside	
C1142	Middle Stoke	20/10/51	View of halt from West	
21018	Middle Stoke	1950s/60s	Allhallows	
33727	Milton Range	1922	View of Accident	COPY
C4726	Milton Range Halt	17/10/74	View from the East end (Higham ) side	

20290	Minster	1960	Canterbury	COPY	
33869	Minster	1960	Faversham		
33870	Minster	1960	Margate		
C4613	Minster	27/07/73	View East from station footbridge		
C4610	Minster	27/07/73	View East from up home signal showing Durlock Main level crossing		
C4619	Minster	27/07/73	View of station buildings from approach road		
C4615	Minster	27/07/73	View of station buildings from up platform		
C4618	Minster	27/07/73	View of station from the West end		
C4616	Minster	27/07/73	View of station level crossing, gates open to railway		
C4617	Minster	27/07/73	View of station level crossing, gates open to road		
C4612	Minster	27/07/73	View South from up home signal showing loops		
C4614	Minster	27/07/73	View West from station footbridge		
C4611	Minster	27/07/73	View West from up home signal showing signal box, etc		
C4981	Minster	14/05/81	View East from down main platform, bay line abolished		
C4982	Minster	14/05/81	View East from footbridge, bay line abolished.		
C4983	Minster	14/05/81	View West from footbridge, bay line abolished.		
21510	Minster	1950s/60s	Faversham		
21516	Minster	1950s/60s	outer platform		
21507	Minster	1950s/60s	Ramsgate		
21508	Minster	1950s/60s	signals		
20463	Mottingham	1930	Dartford	COPY	
21499	Mottingham	1950s/60s	Dartford		
C4848	Mountfield	11/04/79	View South from above tunnel mouth		
C2267	Mountfield Halt	25/09/54	View from country end		
21236	Mountfield Halt	1950s/60s	Hastings		
21237	Mountfield Halt	1950s/60s	Tonbridge		
C2264	Mountfield Tunnel	25/09/54	View of South portal		
C4929	Mountfield Tunnel	09/05/80	View of South end of tunnel and siding layout		
20366	New Cross	1920	London	COPY	
21751	New Cross	1950s/60s	London Bridge		
20412	New Eltham	1920	Dartford	COPY	
20464	New Eltham	1925	Dartford	COPY	
C2514	New Eltham	11/05/55	General view from London end		
C2513	New Eltham	11/05/55	Up side station buildings from approach road		
C2509	New Eltham	11/05/55	View from footbridge looking West showing signal box		
C2511	New Eltham	11/05/55	View from London end of up platform looking East		
C2512	New Eltham	11/05/55	View from road bridge looking west		
C2510	New Eltham	11/05/55	View from up platform showing extension and signal box		
21495	New Eltham	1950s/60s	Dartford		
21491	New Eltham	1950s/60s	Lewisham		
21697	New Hythe	1950s/60s	Strood		
21702	New Hythe	1950s/60s	Strood		
21709	New Hythe	1950s/60s	view of level crossing		
33728	New Romney	1930	View		
33729	New Romney	1960	View	COPY	
21174	New Romney	1950s/60s	Appledore		
21182	New Romney	1950s/60s	Appledore		
21183	New Romney	1950s/60s	Appledore		
21180	New Romney	1950s/60s	Frontage		
21185	New Romney	1950s/60s	Train		
C4683	Norman's Bay, Havensmouth Level Crossing	25/02/74	Havensmouth level crossing from the South		
C4684	Norman's Bay, Havensmouth Level Crossing	25/02/74	Havensmouth level crossing from the North		
C4685	Norman's Bay, Pevensy	25/02/74	Norman's Bay station from the East		
20472	North Camp	1930	Platform View	COPY	
20466	North Camp	1930	Reading		
33732	North Camp	1960	Frontage		
33733	North Camp	1960	Guildford		
33730	North Camp	1960	Reading		
33731	North Camp	1960	Reading		
C4882	North Camp	11/09/79	View of level crossing and signal box, from up side road		
C4880	North Camp	11/09/79	View of station from up platform, Guildford end		
C4881	North Camp	11/09/79	View of station from up platform, Guildford end, with both platform buildings		
64066	North Kent West Junction	1950s/60s	View of signal box from tracks		
20157	Northfleet	1885	Overall view of station looking to Dartford	COPY	'Tonbridge' 29B.
20165	Northfleet	1910	Dartford	COPY	WH Smith S8012

21675	Northfleet	1950s/60s	London Bridge	
21676	Northfleet	1950s/60s	Strood	
C1944	Northiam, KESR	19/12/53	View of station from East	
C1965	Northiam, KESR	02/01/54	General view from West	
C1966	Northiam, KESR	02/01/54	View of platform from the West	
C1967	Northiam, KESR	02/01/54	View of station buildings from North	
C1968	Northiam, KESR	02/01/54	View of station from L.C.	
20131	Nutfield	1930	Tonbridge	
20139	Nutfield	1930	Tonbridge	
33736	Nutfield	1960	Redhill	
33734	Nutfield	1960	Tonbridge	
33735	Nutfield	1960	Tonbridge	
20319	Ore	1900	Ashford	COPY
20313	Ore	1930	Hastings	
21291	Ore	1950s/60s	Hastings	
21312	Ore	1950s/60s	Rye	
20392	Orpington	1900	Sevenoaks	COPY
20388	Orpington	1910	Platforms	COPY
20356	Orpington	1920	London	COPY
20360	Orpington	1920	London	COPY
20354	Orpington	1920	Panorama	
20370	Orpington	1920	Panorama	COPY
20362	Orpington	1935	London	COPY
C2524	Orpington	23/05/55	View North from London end of platforms 5&6	
21719	Orpington	1950s/60s	London Bridge	
21739	Orpington	1950s/60s	London Bridge	
20358	Orpington	1920	London	COPY
C2751	Ospringe Siding	03/12/55	View West showing siding box	



**Penshurst 5/1/52 (Denis Cullum C1198)**

33737	Paddock Wood	1872	Overall view of station looking to Ashford	COPY	THS No 9.
33742	Paddock Wood	1900	Overall view of station looking to Ashford	COPY	DBL No 5050.
20488	Paddock Wood	1905	Ashford	COPY	
33743	Paddock Wood	1910	Frontage and approach	"COPY	Cooper, Maidstone."
33745	Paddock Wood	1910	Overall view of station looking to Ashford	COPY	S No 10134.
33346	Paddock Wood	1910	Overall view of station taken from signal box looking to London	COPY	
33738	Paddock Wood	1910	Tonbridge	COPY	
33739	Paddock Wood	1930	Ashford		
33740	Paddock Wood	1930	Ashford		
33744	Paddock Wood	1930	Ashford		

33741	Paddock Wood	1930	Tonbridge	
C1097	Paddock Wood	15/09/51	View looking East	
C4877	Paddock Wood	31/08/79	View East from station footbridge	
C4876	Paddock Wood	31/08/79	View West from station footbridge	
21769	Paddock Wood	1950s/60s	Ashford	
21772	Paddock Wood	1950s/60s	Ashford	
21767	Paddock Wood	1950s/60s	Tonbridge	
21777	Paddock Wood	1950s/60s	Tonbridge	
20148	Penshurst	1930	Tonbridge	
20004	Penshurst	1950	Tonbridge	
C1199	Penshurst	05/01/52	General view of station from the tunnel top	
C1196	Penshurst	05/01/52	View of down platform	
C1198	Penshurst	05/01/52	View of up platform	
C4451	Penshurst	26/04/69	Up platform from the down side	
C4450	Penshurst	26/04/69	View of signal box and down platform from the up side	
20137	Penshurst	1930s	View of up train hauled by SECR D 1742, passing through station looking to Tonbridge	
COPY				
20406	Petts Wood	1939	London	
21747	Petts Wood	1950s/60s	London Bridge	
21748	Petts Wood	1950s/60s	London Bridge	
C5193	Petts Wood	pre-group	LCDR View of signal box	Copy
C1636	Petts Wood Junction	28/03/53	View South from footbridge	
C3421	Petts Wood Junction	06/06/59	View North from footbridge showing new layout	
C3422	Petts Wood Junction	06/06/59	View South from footbridge showing new layout with signal box.	
C4970	Pevensey & Westham	25/03/81	View West from East end of up platform	
C4969	Pevensey & Westham	25/03/81	View West from station footbridge, including level crossing and signal box	
C4776	Pevensey Bay, Wallsend Level Crossing	27/04/76	View of level crossing from the up side	
33746	Pluckley	1874	View of down platform and station building looking to Tonbridge	COPY THS No 42B.
C4885	Pluckley	21/09/79	View looking East from up platform	
C4887	Pluckley	12/10/79	View looking West from down platform	
C4888	Pluckley	12/10/79	View of down side station buildings from footbridge	
C1434	Plumstead	16/08/52	View looking West	
21655	Plumstead	1950s/60s	frontage	
21672	Plumstead	1950s/60s	London Bridge	
33747	Port Victoria	1910	Seaward "COPY F.H.Lawrence, Lower Stoke"	
33752	Port Victoria	1910	Seaward "COPY F.H.Lawrence, Lower Stoke "	
33753	Port Victoria	1910	Seaward COPY	
33751	Port Victoria	1920	Seaward COPY	
33748	Port Victoria	1930	Landward	
33749	Port Victoria	1930	Seaward	
33750	Port Victoria	1930	Seaward	
33754	Port Victoria	1930	Seaward	
21013	Port Victoria	1950s/60s	Buffers	
21015	Port Victoria	1950s/60s	details	
21008	Port Victoria	1950s/60s	Gravesend	
21009	Port Victoria	1950s/60s	Gravesend	
64070	Purley MPD	1920s	General view looking towards Redhill of shed and yard with 0-4-4Ts in steam; LBSC OHLE in background	
64087	Purley MPD	post 1927	View of shed and yard after electrification and closure; looking to Redhill	
64088	Purley MPD	post 1927	View of shed and yard after electrification and closure but with doorways bricked up; looking to Redhill	
64089	Purley MPD	post 1927	View of shed and yard after electrification and closure but with doorways bricked up; looking to London	
33763	Radnor Park (later renamed Folkestone Central)	1890	View of platforms during building alterations	COPY THS No 10B.
20345	Ramsgate	1928	Herne Bay	COPY
20331	Ramsgate	1950	Faversham	
33868	Ramsgate	1960	Loco No 84028	
33339	Ramsgate Town	1900	Frontage	COPY
33776	Ramsgate Town	1910	Facade	COPY
33774	Ramsgate Town	1910	Platforms	COPY
33775	Ramsgate Town	1910	Platforms	COPY
33764	Ramsgate Town	1910	View of platform with SECR Class C No 191 on passenger train; water tower and overall roof in backgrpund	COPY
33777	Ramsgate Town	1910?	Frontage and approach road with day trippers standing about	COPY

C839	Ramsgate Town and Margate Sands	22/08/50	Similar from Nash Lane bridge showing Goods Yard water tank in background
C838	Ramsgate Town and Margate Sands	22/08/50	View of end of track on site of Margate Sands and Ramsgate Town branch
C844	Ramsgate Town and Margate Sands	23/08/50	View of site of Margate Sands branch from end of station platform
33778	Reading South	1910	External View Copy
33779	Reading South	1950	View
21838	Reading South	late 50's	view of signal box across overgrown track
21221	Reading South	1950s/60s	Buffers
21249	Reading South	1950s/60s	buffers
21254	Reading South	1950s/60s	buffers
21255	Reading South	1950s/60s	buffers
21259	Reading South	1950s/60s	buffers
21253	Reading South	1950s/60s	concourse
21256	Reading South	1950s/60s	Earley
21258	Reading South	1950s/60s	Earley
21257	Reading South	1950s/60s	Frontage
21261	Reading South	1950s/60s	Frontage
21260	Reading South	1950s/60s	Panorama
64082	Reading South MPD	1950s	View eastwards looking to shed building with coaling stage to the right; class Ns prominent
64086	Reading South MPD	1950s	View eastwards looking to shed building looking down from the GWR embankment; connection from GWR to LSWR prominent
64083	Reading South MPD	1950s/60s	View westwards looking to shed building ; 2 class Ns prominent
64085	Reading South MPD	1950s/60s	View westwards looking to shed building ; class N 31809 prominent
64084	Reading South MPD	SR period	View westwards looking to shed building ; class N/Us prominent
22439	Redhill	1920s	Overall view of platforms with SECR class P shunting a coach
<b>Note that the bulk of our Redhill photos will be listed our LBSC list.</b>			
21595	Reedham	1950s/60s	Purley
20441	Reigate	1900	Redhill Copy
20449	Reigate	1900	Redhill COPY Garton Series No 5.
20264	Reigate	1905	Overall view of station looking to Guildford; level crossing in background "COPY WH Smith, S12324"
20421	Reigate	1910	Redhill COPY WH Smith S5271.
20479	Reigate	1910	Redhill Copy
20481	Reigate	1920	Overall view of station looking to Redhill with down train in platform hauled by SER B1 187 Copy
20420	Reigate	1920	Redhill Copy
33781	Reigate	1946	Signal Box & loco 1815
20452	Reigate	1950	Guildford
33782	Reigate	1950	Platforms
33780	Reigate	1950	Platforms & loco 30047
20439	Reigate	1950	Redhill
20442	Reigate	1955	Redhill
20443	Reigate	1955	Redhill
20445	Reigate	1955	Redhill
20486	Reigate	1955	Redhill
C4772	Reigate	23/09/75	View of level crossing and station from footbridge
21841	Reigate	c1960	view of signal box across track
21842	Reigate	c1970	view of signal box across track
C4743	Reigate, Buckland Level Crossing	27/01/75	View of level crossing from the down side
C4742	Reigate, Buckland Level Crossing	27/01/75	View of level crossing from the up side
C5076	Reigate, Buckland Level Crossing	26/09/82	As for No 5075 but from North road approach
C5075	Reigate, Buckland Level Crossing	26/09/82	View of level crossing (AHB) from South road approach
C4656	Robertsbridge	25/10/73	View from down side of level crossing
20588	Robertsbridge	1930	Overall view of station looking to Tonbridge; taken from centre of tracks
33783	Robertsbridge	1930	Tonbridge
20543	Robertsbridge	1955	Hastings
C1947	Robertsbridge	02/01/54	View North from footbridge
C1950	Robertsbridge	02/01/54	View of station buildings from the road
C1949	Robertsbridge	02/01/54	View of station buildings on down side
C1948	Robertsbridge	02/01/54	View of up platform looking North
C1946	Robertsbridge	02/01/54	View South with KESR train in bay
C4657	Robertsbridge	25/10/73	Station buildings from approach road
C4849	Robertsbridge	11/04/79	Level crossing and signal box from up side road approach
C4851	Robertsbridge	11/04/79	Station buildings from approach road
C4850	Robertsbridge	11/04/79	Station buildings from level crossing

C4927	Robertsbridge	25/04/80	View of station looking South from footbridge	
C4926	Robertsbridge	25/04/80	View of station looking South from up platform	
21001	Robertsbridge	1950s/60s	Hastings	
21350	Robertsbridge	1950s/60s	Hastings	
21352	Robertsbridge	1950s/60s	Panorama	
21351	Robertsbridge	1950s/60s	Tonbridge	
21357	Robertsbridge	1950s/60s	Tonbridge	
21361	Robertsbridge	1950s/60s	Tonbridge	
21362	Robertsbridge	1950s/60s	Tonbridge	
C1954	Robertsbridge, KESR	02/01/54	View of North Mill siding looking West	
C1935	Rolvenden, KESR	19/12/53	View towards Robertsbridge of station from signal post	
C1937	Rolvenden, KESR	19/12/53	View of station looking towards Tenterden	
C1938	Rolvenden, KESR	19/12/53	As Neg C1937, from signal post	
20277	Rye	1877	View of platform and main station building looking to Ashford	COPY 'Tonbridge'
44B				
20282	Rye	1910	Ashford	COPY WH Smith S6191.
20283	Rye	1910	Ashford	Copy
20300	Rye	1920	Hastings	Copy
20322	Rye	1920	Hastings	Copy
20321	Rye	1930	Ashford	
20315	Rye	1930	Frontage	
20323	Rye	1950	Ashford	
20316	Rye	1950	Hastings	Copy
C4722	Rye	01/10/74	Station buildings from the up platform	
C4720	Rye	01/10/74	View of up platform and footbridge from down platform	
C4721	Rye	01/10/74	View of up platform from footbridge	
C4792	Rye	18/04/78	View of signal box from down platform	
C4791	Rye	18/04/78	"View of up platform from the down, through footbridge"	
C4793	Rye	18/04/78	View to Hastings from the down platform	
C5043	Rye	03/03/82	View of down platform and signal box from footbridge	
C5042	Rye	03/03/82	View of up platform from footbridge	
21285	Rye	1950s/60s	Ashford	
21290	Rye	1950s/60s	Ashford	
21292	Rye	1950s/60s	Ashford	
21294	Rye	1950s/60s	Ashford	
21299	Rye	1950s/60s	Ashford	
21293	Rye	1950s/60s	Frontage	
21298	Rye	1950s/60s	Frontage	
21311	Rye	1950s/60s	Frontage	
21288	Rye	1950s/60s	Hastings	
21310	Rye	1950s/60s	Hastings	
21295	Rye	1950s/60s	View of main station building and platform looking to Hastings from end of Ashford platform; windmill in distance	
20314	Rye	c1900	View of main station buildings looking to Hastings; Ex LCDR Kirtley Europa class SECR 513 entering with train	Copy
21837	Rye	c1970	view of signal box across track	
21238	Rye Harbour	1950s/60s	End of branch	
21239	Rye Harbour	1950s/60s	End of branch	
C4655	Rye, Becketts level crossing,	10/10/73	View from South side (down side)	
C4719	Rye, Ferry Road Level Crossing	01/10/74	View from footbridge	
C4718	Rye, Grove Road Level Crossing	01/10/74	View from down side	
C4716	Rye, Star Level Crossing	01/10/74	View from the East (down side)	
C4717	Rye, Star Level Crossing	01/10/74	View from the West (up side)	
C1956	Salehurst, Halt, KESR	02/01/54	View of halt	
33343	Sandgate	1891	Overall view of station looking to end of branch from Hythe end; 4 wheel coaches in platform	COPY THS. No 5B.
33787	Sandgate	1900	Aerial View	Copy
33786	Sandgate	1910	Sandling Jcn	Copy
33788	Sandgate	1910	Staff Group	Copy
20434	Sandhurst Halt	1920	Guildford	COPY WHA No 711.
20254	Sandhurst Halt	1920	Platform Shelter	
20248	Sandhurst Halt	1920	Reading	Copy
20484	Sandhurst Halt	1920	Station approach with train in station on embankment above road; SER F with horseboxes and coaches	Copy 409
20234	Sandhurst Halt	1920	View of down platform looking to Reading	Copy

20258	Sandhurst Halt	1930	Reading	Copy
33789	Sandhurst Halt	1950	Reading	
33794	Sandling Junction branch platform	1891	Panoramic view of station and surroundings looking to Dover; Sandgate branch train in COPY THS No 12B.	
33792	Sandling Junction	1910	Dover	Copy
33793	Sandling Junction	1910	Dover	Copy
33361	Sandling Junction	1915	Dover	Copy
33790	Sandling Junction	1920	Distant View	Copy
33791	Sandling Junction	1930	Exterior View	Copy
C853	Sandling Junction	04/09/50	Looking through Haine tunnel towards Hythe	
C852	Sandling Junction	04/09/50	View of station from branch platform	
C851	Sandling Junction	04/09/50	View of station from Dover end	
C4786	Sandling Junction	03/03/78	View of the East end of Sandling tunnel	
21771	Sandling Junction	1950s/60s	Ashford	
21765	Sandling Junction	1950s/60s	Dover	
21766	Sandling Junction	1950s/60s	panorama	
21764	Sandling Junction	1950s/60s	view of branch platform	
21768	Sandling Junction	1950s/60s	view of branch platform	
21778	Sandling Junction	1950s/60s	view of branch platform	
21703	Sandling Junction	1950s/60s	view of Sandgate branch platform	
20346	Sandwich	1905	Frontage	Copy
21321	Sandwich	c1961	View of platforms and footbridge looking to Minster; after electrification with evidence of platform lengthening taking place	
21821	Sandwich, Ash level Crossing	c1920	view from Road, Ex-SER Class class O SECR 171 crossing on freight copy	
C2493	Selsdon	07/05/55	View North of SER platforms, (Croydon & Oxted Joint line)	
C2492	Selsdon	07/05/55	View North West from Croydon line footbridge	
C2491	Selsdon	07/05/55	View South East from Croydon line footbridge	
21112	Selsdon	1950s/60s	Addiscombe	
21113	Selsdon	1950s/60s	Addiscombe	
21115	Selsdon	1950s/60s	Addiscombe	
21117	Selsdon	1950s/60s	Addiscombe	
21118	Selsdon	1950s/60s	Addiscombe	
21125	Selsdon	1950s/60s	Panorama	
21111	Selsdon	1950s/60s	Sanderstead	
21133	Selsdon	1950s/60s	Sanderstead	
21122	Selsdon	1950s/60s	Signal Box/Track	
21110	Selsdon	1950s/60s	Woodside	
21119	Selsdon	1950s/60s	Woodside	
21120	Selsdon	1950s/60s	Woodside	
21132	Selsdon	1950s/60s	Woodside	
21139	Selsdon	1950s/60s	Woodside	
33796	Selsdon Road	1905	LB&SCR train	Copy
33797	Selsdon Road	1905	SE&CR Railmotor	Copy
33798	Selsdon Road	1950	Platforms	
C5208	Selsdon Road	pre-group	SECR Selsdon Road station, looking towards Woodside, showing North box Copy	
C5209	Selsdon Road	pre-group	SECR Selsdon Road station, showing junction box Copy	
C5196	Selsdon Road	Pre-group	View of Selsdon Road North signal box Copy	
20391	Sevenoaks	1890	View of platforms looking to footbridge in London direction Copy 'Tonbridge' 18.	
20384	Sevenoaks	1905	View of station and footbridge looking to Tonbridge Copy	
20400	Sevenoaks	1920	Station Approach Copy	
20369	Sevenoaks	1955	Tonbridge	
20357	Sevenoaks	1960	London Copy	
C2526	Sevenoaks	23/05/55	View North from South end showing new footbridge	
C2525	Sevenoaks	23/05/55	View South from new footbridge (platforms 5&6)	
21730	Sevenoaks	1950s/60s	London Bridge	
21741	Sevenoaks	1950s/60s	London Bridge	
21762	Sevenoaks	1950s/60s	Tonbridge	
21817	Sevenscore Level Crossing	c1910-4	Between Minster and St.Lawrence. Gates across road copy	
21225	Shakespeare Cliff	1950s/60s	Dover	
20483	Shalford	1900	View of down platform and main station building looking to Redhill; cattle dock in foreground, goods shed in background Copy S&W Series No 1375	
20249	Shalford	1910	Frontage COPY No 34.	
20275	Shalford	1920	Overall view looking to Redhill; down platform buildings prominent COPY No 404YC.	
33799	Shalford	1950	Dorking	
33800	Shalford	1950	Guildford	
C4375	Shalford	05/10/67	View of station buildings from approach road	



C4376	Shalford	05/10/67	View of station from road overbridge	
33801	Sharnal Street	1930	Port Victoria	
33341	Sharnal Street	1950	Port Victoria	
C1136	Sharnal Street	20/10/51	View looking East of exchange sidings with Chattenden and Upnor railway	
C1135	Sharnal Street	20/10/51	View of station from East	
21021	Sharnal Street	1950s/60s	Allhallows	
33806	Shorncliffe	1871	Overall view of station looking to Dover	COPY THS No 39B.
21782	Shorncliffe	1950s/60s	Ashford	
20415	Sidcup	1905	Dartford	COPY
20459	Sidcup	1910	Dartford	COPY
20418	Sidcup	1920	Frontage	COPY
C1674	Sidcup	18/04/53	View of station looking East	
21489	Sidcup	1950s/60s	Dartford	
21500	Sidcup	1950s/60s	Dartford	
21847	Sidcup	c1970	view of signal box across track	
33807	Sidley	1910	Exterior View	COPY
33809	Sidley	1910	Facade	COPY
33808	Sidley	1930	Crowhurst	
C2414	Sidley	02/03/55	View near	
C2416	Sidley	02/03/55	View North from down platform, country end	
C2415	Sidley	02/03/55	View South from overbridge	
21029	Sidley	1950s/60s	Crowhurst	
21644	Slade Green	1950s/60s	London Bridge	
21670	Slade Green	1950s/60s	London Bridge	
21736	Slade Green	1950s/60s	London Bridge	
21642	Slade Green	1950s/60s	signal box	
21832	Slade Green	c1960	view of signal box from road, across track.gates across Railway	
20182	Slades Green	1900	Dartford	COPY
20204	Slades Green	1900	View of close coupled LCDR 4 wheelers on down service in platform looking to Dartford	
			COPY	
33810	Smeeth	1910	Exterior View showing station buildings with yard in background	COPY
33811	Smeeth	1910	View of crossing between up and down platforms with signal box prominent looking to	
	Ashford;		down train approaching in distance	COPY
33812	Smeeth	1920	Exterior View	COPY
21808	Smeeth	1950s/60s	Ashford	
21272	Smeeth	1950s/60s	Dover	
21273	Smeeth	1950s/60s	Dover	
21271	Smeeth	1950s/60s	Panorama	
C2323	Smitham	06/11/54	View North from South end of down platform	
C2324	Smitham	06/11/54	View South from North end of down platform	
21592	Smitham	1950s/60s	Purley	
21593	Smitham	1950s/60s	Purley	
21833	Smitham	c1960	view of signal box across track	
21879	Smitham	c1970's	Coulsdon North and Smitham SR sign on Road underbridge	
21232	Snailham	1950s/60s	Rye	
21231	Snailham Halt	1950s/60s	Hastings	
21233	Snailham Halt	1950s/60s	Rye	
21306	Snailham Halt	1950s/60s	Rye	
20012	Snodland	1910	Overall view of station looking to Strood, taken from footbridge	COPY 'Hambrook's'
20063	Snodland	1930	Strood	COPY
21687	Snodland	1950s/60s	frontage	
21706	Snodland	1950s/60s	Strood	
21711	Snodland	1950s/60s	Strood	
C1536	South Street	22/11/52	Remains of halt	
C2696	Southborough Viaduct	24/09/55	View South at site of old signal box	
C4687	Southeast & Rodmell	25/02/74	View of station from footbridge	
33813	Southwark Park	1910	View from end of platform looking to London Bridge	COPY
21041	Spa Road	1950s/60s	Frontage	
21713	St Johns	1950s/60s	Frontage	
21753	St Johns	1950s/60s	London Bridge	
21722	St Johns	1950s/60s	Tonbridge	
33820	St Lawrence	1916	View of platforms	COPY
33819	St Lawrence	1916	View of signal box, overbridge with halt in the background	COPY
33817	Staplehurst	1887	View of up platform looking to Ashford	COPY THS No 15.
33815	Staplehurst	1910	Tonbridge	COPY
33816	Staplehurst	1910	Tonbridge	COPY
33818	Staplehurst	1910	Tonbridge	COPY No 2404.

21773	Staplehurst	1950s/60s	Tonbridge	
21846	Staplehurst	c1960	view of signal box across track	
21004	Stoke Junction	1950s/60s	Allhallows	
21006	Stoke Junction	1950s/60s	Allhallows	
21658	Stone Crossing Halt	1950s/60s	Dartford	
20465	Stonegate	1920	Tonbridge	COPY
20625	Stonegate	1960	Hastings	
C927	Stonegate	26/03/51	View of station from Burwash Road Bridge	
C928	Stonegate	26/03/51	View of station from Etchingham end	
C4833	Stonegate	05/10/78	As for Neg C4832, but another view	
C4832	Stonegate	05/10/78	View of station from road overbridge, looking South	
21354	Stonegate	1950s/60s	Buildings	
21341	Stonegate	1950s/60s	Hastings	
20593	Strood	1854	Panorama	Copy
21680	Strood	1950s/60s	Frontage	
21685	Strood	1950s/60s	Gravesend	
21688	Strood	1950s/60s	Gravesend	
21710	Strood	1950s/60s	Paddock Wood	
C1615	Sturry	28/02/53	View of down platform from West	
C1613	Sturry	28/02/53	View of up platform from West	
C4944	Sturry	12/09/80	Level crossing and station from the up platform	
C4943	Sturry	12/09/80	Level crossing, signal box and station from up platform	
C4958	Sturry	20/11/80	View of station, level crossing and signal box from the up platform, barriers installed	
21515	Sturry	1950s/60s	Canterbury	
21505	Sturry	1950s/60s	Ramsgate	
20076	Sundridge Park	1910	Overall view of station with down train arriving; looking to Grove Park	Copy WH
Smith S5669				
21454	Sundridge Park	1950s/60s	Frontage	
21455	Sundridge Park	1950s/60s	Grove Park	
21651	Swanscombe Halt	1950s/60s	London Bridge	



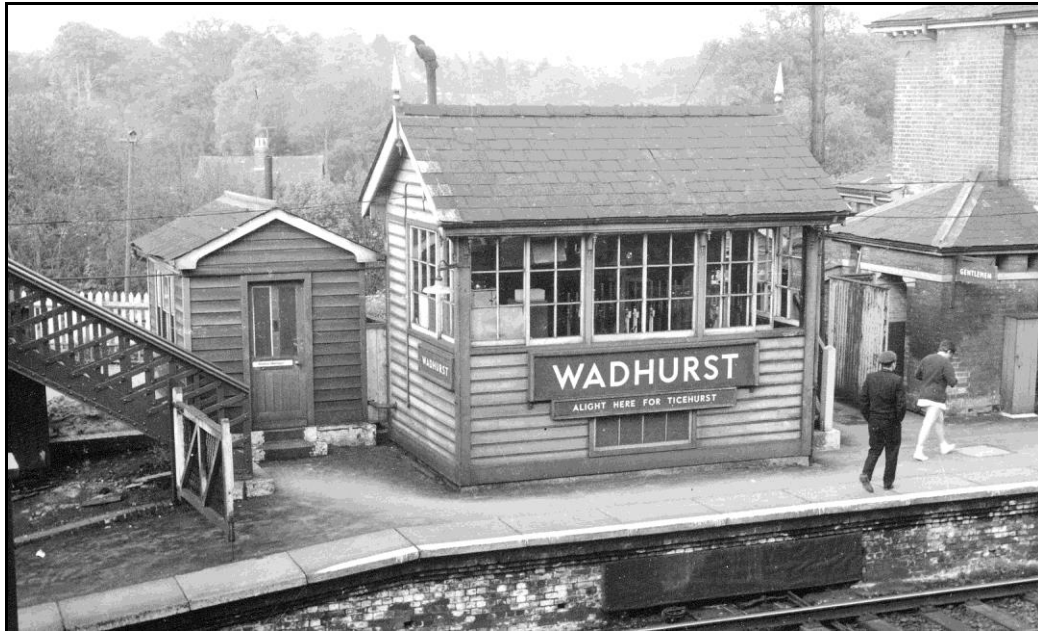
**Tattenham Corner c1914 (20201)**

20194	Tadworth	1900	Frontage	Copy
20193	Tadworth	1900	Purley	Copy
20195	Tadworth	1905	Croydon	Copy
20196	Tadworth	1905	Tattenham Corner	Copy
20224	Tadworth	1910	Tattenham Corner	COPY Gates Series No 3803
20210	Tadworth	1915	Frontage	COPY Gates Series No 270S
20215	Tadworth	1915	Purley	COPY
20209	Tadworth	1915	Tattenham Corner	COPY
20211	Tadworth	1915	Tattenham Corner	COPY

20216	Tadworth	1925	Tattenham Corner	COPY
21597	Tadworth	1950s/60s	frontage	
21605	Tadworth	1950s/60s	frontage	
21603	Tadworth	1950s/60s	Tattenham Corner	
21604	Tadworth	1950s/60s	Tattenham Corner	
20219	Tattenham Corner	1905	Buffers	COPY
20199	Tattenham Corner	1905	View of coach sidings with signal gantry; looking away from station	COPY
20200	Tattenham Corner	1905	View of newly constructed station from platform ends back to the buffers; Class C on train of 6 wheelers	COPY
20203	Tattenham Corner	1905	View of signal gantries at station throat	COPY
20198	Tattenham Corner	1905	View of yard throat looking back to the station	COPY
20201	Tattenham Corner	1914	Troops on platform with 4 and 6 wheel carriages behind	COPY No E213.
20214	Tattenham Corner	6/1963	Buffers	
20213	Tattenham Corner	6/1963	Purley	
20197	Tattenham Corner	1922/3	Looking away from buffers with Pullman race special in platform hauled by N SECR 812	Copy
20202	Tattenham Corner	1922/3	Looking away from buffers with Pullman race specials in platform hauled by N SECR 812 and 817	Copy
64062	Tattenham Corner	1950s	View across tracks to signal box; LBSC K 32342 behind on ECS	
21606	Tattenham Corner	1950s/60s	frontage	
21610	Tattenham Corner	1950s/60s	frontage	
21611	Tattenham Corner	1950s/60s	frontage	
21613	Tattenham Corner	1950s/60s	platforms	
21608	Tattenham Corner	1950s/60s	Purley	
21609	Tattenham Corner	1950s/60s	Purley	
21615	Tattenham Corner	1950s/60s	signal box	
21612	Tattenham Corner	1950s/60s	signals	
21614	Tattenham Corner	1950s/60s	signals	
C1913	Tenterden St Michael, KESR	22/11/53	View of tunnel from South	
C1914	Tenterden St Michael, KESR	22/11/53	View from North	
C1915	Tenterden St Michael, KESR	22/11/53	View from South	
C1931	Tenterden St Michael, KESR	19/12/53	View of tunnel from 10-55 am train Headcorn to Tenterden Town	
C1917	Tenterden Town, KESR	22/11/53	Goods yard layout	
C1918	Tenterden Town, KESR	22/11/53	Platform layout (from Headcorn)	
C1919	Tenterden Town, KESR	22/11/53	General view and station layout (from Headcorn)	
C1920	Tenterden Town, KESR	22/11/53	Station buildings from the road	
C1923	Tenterden Town, KESR	22/11/53	View from Rolvenden end	
21227	Teston Crossing Halt	1950s/60s	Paddock Wood	
20298	Three Oaks & Guestling	1930	Hastings	
21301	Three Oaks & Guestling	1950s/60s	Hastings	
21300	Three Oaks & Guestling	1950s/60s	Rye	
21305	Three Oaks & Guestling	1950s/60s	Rye	
20626	Ticehurst Road	1920	Hastings	Copy
20226	Tonbridge	1870	View of trackwork on the Ashford side of the station overbridge	Copy 'Tonbridge' No 17.
20227	Tonbridge	1888	Ashford	Copy
20583	Tonbridge	1920	Frontage	Copy No 48243.
33825	Tonbridge	1930	Platforms & loco	No 1755
33824	Tonbridge	1930	Platforms & loco	No 2367
20518	Tonbridge	1935	Ashford	
20586	Tonbridge	1935	Redhill	
20533	Tonbridge	1950	Ashford	
20534	Tonbridge	1950	Ashford	
33823	Tonbridge	1950	Ashford	
33822	Tonbridge	1950	Sevenoaks	
C3191	Tonbridge	03/05/58	View East from road overbridge	
C3198	Tonbridge	10/05/58	View West from steps of B box	
C5190	Tonbridge	pre-group	SECR up train at old station	Copy
64099	Tonbridge MPD	1950s	View of shed looking east, coaling stage to the left; 76058 prominent	
C1229	Tongham	19/01/52	View of station looking East	
33826	Tovil	1910	Paddock Wood	COPY
33827	Tovil	1930	Overall view of platforms looking to Maidstone; up platform shelter prominent	
C1072	Tovil	04/08/51	Loose Valley bridge over the Medway from station (since abolished)	
21228	Tovil	1950s/60s	Maidstone West	
20622	Tunbridge Wells Central	1920	Frontage	Copy No 19.
20624	Tunbridge Wells Central	1920	Frontage	COPY
C4830	Tunbridge Wells Central	05/10/78	View of up side buildings from approach road	

C2585	Tunbridge Wells Central	09/07/55	View looking North
C3221	Tunbridge Wells Central	10/05/58	View of up side buildings from approach road
C4831	Tunbridge Wells Central	05/10/78	View of down side buildings from Mount Pleasant
21342	Tunbridge Wells Central	1950s/60s	Hastings
21367	Tunbridge Wells Central	1950s/60s	Hastings
21345	Tunbridge Wells Central	1950s/60s	Tonbridge
C3210	Tunbridge Wells Central Goods	10/05/58	View looking towards Wells Tunnel from Central Goods
C3211	Tunbridge Wells Central Goods	10/05/58	View of Central Goods

33831	Uralite Halt	1930	Gravesend
C1079	Uralite Halt	25/08/51	View of Halt



**Wadhurst 1960s (64063)**

20598	Wadhurst	1885	View of down platform and main station building looking to Tonbridge	COPY
'Tonbridge' No 45B				
20276	Wadhurst	1900	Frontage	COPY
20608	Wadhurst	1905	Hastings	COPY
20546	Wadhurst	1910	Hastings	COPY
20554	Wadhurst	1910	Hastings	COPY
20558	Wadhurst	1910	Station Approach	COPY No 50
20550	Wadhurst	1910	Station Approach & Frontage	COPY
20537	Wadhurst	1910	Tonbridge	COPY
20549	Wadhurst	1910	Tonbridge	COPY
20551	Wadhurst	1910	Tonbridge	COPY
20565	Wadhurst	1910	Tonbridge	COPY
20555	Wadhurst	1920	Station Approach & Frontage	"COPY Casterton, Wadhurst"
20541	Wadhurst	1930	Tonbridge	
20544	Wadhurst	1930	Tonbridge	
C2577	Wadhurst	09/07/55	View from London end showing up platform	
C2572	Wadhurst	09/07/55	View from South	
C2570	Wadhurst	09/07/55	View of down platform looking South	
C4836	Wadhurst	05/10/78	View of down side buildings from footbridge	
C4837	Wadhurst	05/10/78	View of signal box and down side buildings from footbridge	
C4835	Wadhurst	05/10/78	View of station buildings from the approach road	
21346	Wadhurst	1950s/60s	View of signal box and footbridge	
64063	Wadhurst	1960s	View of signal box from footbridge	
21364	Wadhurst	1960s	view of up platform, footbridge & signal box from end of down platform, looking to Tonbridge	
C2575	Wadhurst Tunnel	09/07/55	View of North entrance	
20336	Walmer	1930	Minster	

21875	Walmer	late 50's	Signal box viewed from platform across track	
21327	Walmer		post 1961 View of main station buildings and canopy looking to Dover after electrification. LQ signals still in use.	
20432	Wanborough	1920	Guildford	COPY
20446	Wanborough	1920	Reading	COPY
20450	Wanborough	1920	Reading	COPY RAP Co Ltd.
20491	Wanborough	1920	Reading	"COPY Harvey, Normandy."
20478	Wanborough	1930	Frontage	COPY
20454	Wanborough	1930	Reading	COPY Harvey. Normandy No 28
C978	Wanborough	14/05/51	View of station	
20235	Warlingham	1930	Platform Shelter	COPY
20244	Warlingham	1930	Purley	COPY
C2879	Warlingham	07/06/56	View from footbridge looking East	
C2878	Warlingham	07/06/56	View from London end of up platform looking East	
21619	Warlingham	1950s/60s	Caterham	
21623	Warlingham	1950s/60s	Caterham	
21835	Warlingham	c1960	view across Railway to signal box front. Gates across Railway	
21834	Warlingham	c1960	view of signal box from road	
21226	Warren Halt	1950s/60s	Dover	
20605	Warrior Square	1905	Frontage	COPY
20536	Warrior Square	1910	Frontage	COPY
C3020	Warrior Square	11/05/57	View looking East from London end of down platform	
20062	Wateringbury	1886	View of platform and main station building looking to Paddock Wood	COPY
	"Tonbridge' 22B			
20060	Wateringbury	1900	Maidstone	COPY
20058	Wateringbury	1920	Approach and Frontage	COPY
20059	Wateringbury	1920	Approach and Frontage	COPY
20069	Wateringbury	1920	Maidstone	COPY
20071	Wateringbury	1920	Maidstone	COPY
C1459	Wateringbury	06/09/52	View of down platform looking North	
C1456	Wateringbury	06/09/52	View of down platform looking South	
C1460	Wateringbury	06/09/52	view of up platform looking South	
21678	Wateringbury	1950s/60s	Paddock Wood	
21698	Wateringbury	1950s/60s	Paddock Wood	
21686	Wateringbury	1950s/60s	Strood	
C2990	Waterloo East	08/05/57	View of alterations to East end of platform A	
C3100	Waterloo East	10/10/57	"View looking East from end of platform A, showing viaduct widening"	
C3101	Waterloo East	10/10/57	View of platform A looking East showing temporary platform	
C3103	Waterloo East	23/10/57	View of platform A looking East after track slewing	
C3104	Waterloo East	23/10/57	View of platform A looking East after track slewing	
C3156	Waterloo East	28/11/57	View East from country end of platforms B&C showing extension to Platform D.	
C3181	Waterloo East	29/04/58	View East from platforms B&C showing extension	
C3815	Waterloo East	13/10/62	As for Negs C3813/4 but looking towards London Bridge	
C3816	Waterloo East	13/10/62	As for Negs C3813/4/5 but looking towards Charing Cross	
C3814	Waterloo East	13/10/62	View from roof ( as for Neg C3813) with HC 24 down	
C3813	Waterloo East	13/10/62	View from roof of offices towards Charing Cross	
C4443	Waterloo East	16/01/69	As for Neg C4442, but another view	
C4440	Waterloo East	16/01/69	York Road Bridge SEC, from Memorial Arch	
C4441	Waterloo East	16/01/69	York Road Bridge SEC, from Shell footbridge	
C4444	Waterloo East	16/01/69	York Road Bridge SEC, from the roundabout	
C4442	Waterloo East	16/01/69	York Road Bridge SEC, from York Roa	
C4859	Waterloo East	01/06/79	As for Neg C4858 but with down train passing from up local line	
C4862	Waterloo East	01/06/79	As for Neg C4858, but from temporary footbridge over local lines, looking towards Charing Cross	
C4861	Waterloo East	01/06/79	As for Neg C4858, but from temporary footbridge over through lines, looking towards Charing Cross"	
C4860	Waterloo East	01/06/79	As fro Neg C4858, but from temporary footbridge over through lines, looking towards London Bridge	
C4858	Waterloo East	01/06/79	View from temporary footbridge over local lines, looking towards London Bridge, with temporary scissors crossing (for rebuilding rhe River Bridge)	
21758	Waterloo East	1950s/60s	footbridge	
21743	Waterloo East	1950s/60s	London Bridge	
20427	Wellington College	1900	Reading	COPY
20262	Wellington College	1905	Reading	COPY
20467	Wellington College	1920	Reading	COPY
20425	Wellington College	1925	Guildford	COPY
20426	Wellington College	1925	Guildford	COPY No 703.

20453	Wellington College	1930	Station Approach	COPY	No 375.
20603	West St Leonards	1910	Hastings	COPY	
C2426	West St Leonards	02/03/55	Station buildings from road		
C2428	West St Leonards	02/03/55	View South from Road overbridge		
C3012	West St Leonards	11/05/57	View East from road overbridge at London end		
C3008	West St Leonards	11/05/57	"View of viaduct No 2176 on Bexhill West line from, near MP 59 3/4."		
21369	West St Leonards	1950s/60s	Frontage		
21370	West St Leonards	1950s/60s	Hastings		
20003	West Wickham	1900	Overall view of station looking to Elmers End	COPY	
20002	West Wickham	1935	Overall view of station looking to Elmers End; electrified track	COPY	Callard Series
21554	West Wickham	1950s/60s	frontage		
21555	West Wickham	1950s/60s	Hayes		
21556	West Wickham	1950s/60s	Hayes		
C5202	West Wickham	pre-group	West Wickham station	Copy	
20160	Westcombe Park	1905	Dartford	COPY	
20181	Westcombe Park	1910	London	COPY	
C4963	Westcombe Park	10/03/81	"View from down platform, country end"		
C4962	Westcombe Park	10/03/81	"View of station from the up platform, London end"		
21641	Westcombe Park	1950s/60s	Dartford		
21647	Westcombe Park	1950s/60s	Dartford		
21668	Westcombe Park	1950s/60s	Dartford		
20353	Westenhanger	1879	View of up platform and station building looking to Dover	COPY	'Tonbridge' 38B.
33344	Westenhanger	1905	Staff Group	COPY	
33833	Westenhanger	1910	Approach Road	COPY	
C4703	Westenhanger	26/04/74	View from London end	footbridge	
C4702	Westenhanger	26/04/74	View of racecourse platforms from footbridge		
C4788	Westenhanger	03/03/78	View East from Racecourse station	Footbridge	
C4787	Westenhanger	03/03/78	View West from Racecourse station	footbridge	
21776	Westenhanger	1950s/60s	Ashford		
21791	Westenhanger	1950s/60s	Ashford		
21774	Westenhanger	1950s/60s	Dover		
21779	Westenhanger	1950s/60s	Dover		
21790	Westenhanger	1950s/60s	Dover		
21836	Westenhanger	c1960	view of signal box across track		
33350	Westerham	1905	Dunton Green	COPY	
33836	Westerham	1910	Facade	COPY	E. A. Ashby.
33840	Westerham	1925	View of station looking away from buffers.		Branch train in platform hauled by SER class Q
0-4-4T				COPY	
33839	Westerham	1930	Buffers		
33834	Westerham	1935	Railcar	COPY	
33835	Westerham	1950	Buffers		
33362	Westerham	1960	Dunton Green		
33837	Westerham	1960	Dunton Green		
33838	Westerham	1960	Train & loco No 31308		
33842	Westerham	1960	Train & loco No 31318		
33364	Westerham	1965	Frontage		
33841	Westerham	1965	View after closure		
21205	Westerham	1950s/60s	Awnings		
21211	Westerham	1950s/60s	Awnings		
21195	Westerham	1950s/60s	Buffers		
21197	Westerham	1950s/60s	Buffers		
21202	Westerham	1950s/60s	Dunton Green		
21203	Westerham	1950s/60s	Dunton Green		
21207	Westerham	1950s/60s	Frontage		
21206	Westerham	1950s/60s	Panorama		
33845	Whitstable	1900	Tankerton Road level crossing	"COPY	Willatt, Whitstable"
33850	Whitstable Harbour	1905	Exterior View	COPY	
33846	Whitstable Harbour	1915	Train & loco No 147	COPY	
33849	Whitstable Harbour	1920	Harbour Sidings		
33334	Whitstable Harbour	1930	Harbour		
33335	Whitstable Harbour	1930	Harbour		
33853	Whitstable Harbour	1930	Platforms		
33844	Whitstable Harbour	1930	Train		
33852	Whitstable Harbour	1930	Train & loco No 1010		
33843	Whitstable Harbour	1930	Train & loco No 124	COPY	
33851	Whitstable Harbour	1950	Station Buildings		
33848	Whitstable Harbour	1955	Goods train		

33847	Whitstable Harbour	1955	Platforms	
C1533	Whitstable Harbour	22/11/52	View of harbour lines looking North	
C1532	Whitstable Harbour	22/11/52	View of harbour lines looking West	
C1534	Whitstable Harbour	22/11/52	View of station looking S from Level Crossing	
33855	Whitstable Harbour Branch	1900	Train & R Class loco	COPY
33856	Whitstable Harbour Branch	1900	Train & R class loco	COPY
33854	Whitstable Harbour Branch	1905	Train	COPY
20239	Whyteleafe	1899	Overall view of station looking to Caterham	COPY
20238	Whyteleafe	1905	Purley	COPY
20236	Whyteleafe	1910	Overall view of station looking to Purley	COPY WTC 1149.
20237	Whyteleafe	1930	View of approach and station exterior	COPY
21839	Whyteleafe	c1960	view of signal box across track	
21625	Whyteleafe South	1950s/60s	Caterham	
21626	Whyteleafe South	1950s/60s	footbridge	
21617	Whyteleafe South	1950s/60s	Purley	
21618	Whyteleafe South	1950s/60s	Purley	
21621	Whyteleafe South	1950s/60s	Purley	
21624	Whyteleafe South	1950s/60s	Purley	
21622	Whyteleafe South	1950s/60s	signal box	
21840	Whyteleafe South	c1960	view of signal box from Road across track, gates across Railway	
C4782	Whyteleafe South	20/07/77	View of station from the up platform	
20317	Winchelsea	1930	Overall view of station looking to Ashford	
C4723	Winchelsea	01/10/74	View of level crossing from the down side	
C4724	Winchelsea	01/10/74	View towards Rye from down platform	
C5054	Winchelsea	19/05/82	View from Hastings end (single Line)	
C5055	Winchelsea	19/05/82	View from Rye end of old down platform	
C5056	Winchelsea	19/05/82	View of "open " level crossing from station platform	
C5057	Winchelsea	19/05/82	View of old station buildings and down platform	
21297	Winchelsea	1950s/60s	Ashford	
21296	Winchelsea	1950s/60s	Hastings	
21304	Winchelsea	1950s/60s	Hastings	
21307	Winchelsea	1950s/60s	Hastings	
21302	Winchelsea	1950s/60s	Rye	
21303	Winchelsea	1950s/60s	Rye	
20448	Winersh	1920	Guildford	COPY
20257	Winersh	1930	Guildford	
33857	Winersh	1960	Reading	
C2875	Withyham	26/05/56	View of station form Level Crossing looking East	
C1940	Wittersham Road, KESR	19/12/53	View(general) looking towards Headcorn	
C1941	Wittersham Road, KESR	19/12/53	View of platform	
C1942	Wittersham Road, KESR	19/12/53	General view looking towards Robertsbridge	
20267	Wokingham	1910	Reading	COPY
20457	Wokingham	1910	Reading	COPY
20410	Wokingham	1930	Guildford	
20411	Wokingham	1930	Guildford	
20433	Wokingham	1930	Guildford	
20428	Wokingham	1935	Guildford	
20436	Wokingham	1935	Guildford	
33858	Wokingham	1960	Reading	
C4884	Wokingham	11/09/79	View from footbridge, looking towards Guildford, with signal box and level crossing	
C4883	Wokingham	11/09/79	View of station from footbridge, looking towards Reading	
C3883	Wokingham, Star Lane Level Crossing	18/06/64	View of gate box, preparatory work for automatic half barriers	
C1593	Woldingham	14/02/53	View of station from platform looking N.W.	
C1592	Woldingham	14/02/53	View of station from road looking N.W.	
20218	Woodmansterne	1935	Purley	COPY
21594	Woodmansterne	1950s/60s	Purley	
33859	Woodside	1910	Facade	COPY
21114	Woodside	1950s/60s	Frontage	
21138	Woodside	1950s/60s	Panorama	
21140	Woodside	1950s/60s	Sanderstead	
C5191	Woodside	pre-group	View of station with Selsdon Rd train, and LBSCR train in down bay	Copy
20183	Woolwich Arsenal	1910	Frontage	COPY
20173	Woolwich Arsenal	1920	London	COPY
20172	Woolwich Arsenal	1930	Street Scene	"COPY Molyneux Bros, Woolwich."
C1432	Woolwich Arsenal	16/08/52	View looking West	
21643	Woolwich Arsenal	1950s/60s	Dartford	
21671	Woolwich Arsenal	1950s/60s	Dartford	

21638	Woolwich Arsenal	1950s/60s	frontage	
21657	Woolwich Arsenal	1950s/60s	frontage	
21649	Woolwich Arsenal	1950s/60s	London Bridge	
21654	Woolwich Arsenal	1950s/60s	London Bridge	
C1431	Woolwich Dockyard	16/08/52	View looking East	
21673	Woolwich Dockyard	1950s/60s	Dartford	
64067	Woolwich Dockyard	1950s/60s	View of ticket office exterior.	Roof slates missing exposing rafters.
20287	Wye	1900	Canterbury	COPY
20295	Wye	1930	Canterbury	COPY
21502	Wye	1950s/60s	level crossing & frontage	
21506	Wye	1950s/60s	Ramsgate	
20066	Yalding	1870	Overall view of original station (wooden buildings) from Strood direction looking to	
Paddock Wood	COPY	"Tonbridge"	40B	
20056	Yalding	1910	Paddock Wood	COPY G.A.Cooper Series
20064	Yalding	1920	Overall view of station from Strood end looking to Paddock Wood	COPY W.E.Lawrence
C1464	Yalding	06/09/52	View of down platform and goods shed	
C1465	Yalding	06/09/52	View of up platform from Footbridge	
C5089	Yalding	19/11/82	View of level crossing from the Paddock Wood side	
C5090	Yalding	19/11/82	View of station from level crossing	
21692	Yalding	1950s/60s	Paddock Wood	
21737	Yalding	1950s/60s	Paddock Wood	
21696	Yalding	1950s/60s	Strood	