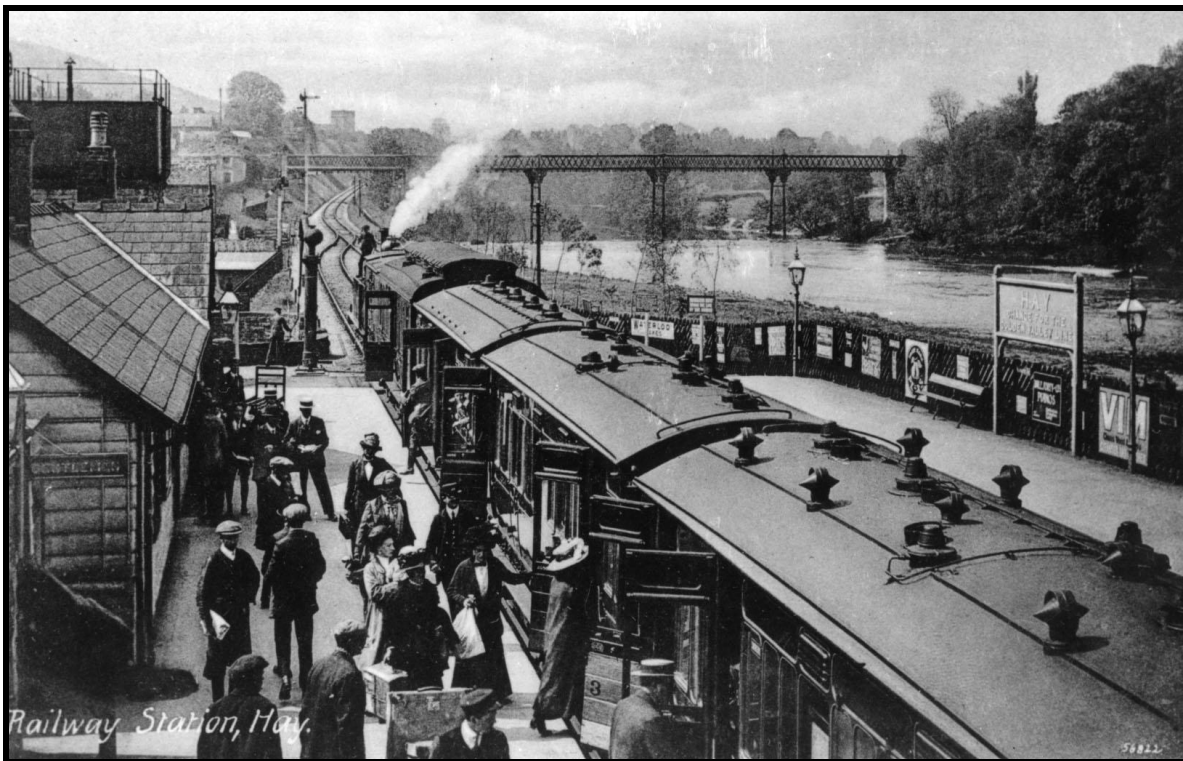


MIDLAND RAILWAY STATIONS

LENS OF SUTTON ASSOCIATION
List 19 (Issue 2 March 2010)



Hay-on-Wye (12643)

MIDLAND RAILWAY STATIONS

Lens of Sutton Collection

With a route mileage of around 2,100 miles (including various jointly-owned and leased lines) the Midland was Britain's second largest Pre-grouping company. The following list of station views from the Lens of Sutton Collection encompasses the Midland's core system, although most of the joint lines are excluded. Stations on the Midland & Great Northern, Somerset & Dorset, Portpatrick & Wigtonshire and Cheshire Lines systems are included in other lists.

- 12481 MID/GWR Alcester Postcard view, circa 1912, showing up and down platforms, station buildings and signal cabin, looking north towards Barnt Green.
- 12488 MID/GWR Alcester Pre-grouping view, circa 1912.
- 37315 MID/GWR Alcester General view, circa 1960, showing up and down platforms and station buildings, looking south towards Ashchurch.
- 37316 MID/GWR Alcester General view, circa 1960, showing up and down platforms,, station buildings and goods shed, looking north towards Barnt Green.
- 55563 MID/GWR Alcester General view, circa 1930s, showing up and down platforms and station buildings, looking south towards Ashchurch.
- 55564 MID/GWR Alcester Postcard view, circa 1912, showing up and down platforms and station buildings, looking south towards Ashchurch.
- 12548 MID Aldridge General view, circa 1930s.
- 12549 MID Aldridge General view, 26-05-1961.
- 36910 MID Aldridge Archive view, circa 1905, showing 0-6-0 locomotives and MR hip-roofed signal cabin.
- 13362 MID Alfreton & South Normanton Pre-grouping view, circa 1912.
- 13363 MID Alfreton & South Normanton Pre-grouping view, circa 1912.
- 12929 MID Alvechurch Pre-grouping view, circa 1912.
- 36005 MID Alvechurch General view, circa 1960s, showing single platform and station building, with class '5MT' 4-6-0 No.45263.
- 36006 MID Alvechurch General view, circa 1960s, showing single platform and station building.
- 36007 MID Alvechurch Archive view, circa 1906, showing single platform and station building, with Kirtley 2-4-0 No.164A approaching with a train from Birmingham.
- 36008 MID Alvechurch General view, circa 1960s, showing single platform and station building, looking north towards Redditch.
- 13419 MID Ambergate Pre-grouping view, circa 1912.
- 13420 MID Ambergate Pre-grouping view, circa 1912.
- 13421 MID Ambergate Pre-grouping view, circa 1912.
- 13422 MID Ambergate Pre-grouping view, circa 1912.
- 13423 MID Ambergate Pre-grouping view, circa 1912.
- 13424 MID Ambergate General view, circa 1960s.
- 13425 MID Ambergate General view, circa 1960s.
- 12433 MID Ampthill General view, circa 1960s.
- 12434 MID Ampthill General view, circa 1960s.
- 36047 MID Ampthill Detailed study of signal cabin, circa 1962.
- 37354 MID Ampthill General view, circa 1960s, showing up and down platforms, station buildings and road overbridge.

- 37355 MID Ampthill General view, circa 1960s, showing up and down platforms, station buildings and enclosed footbridge.
- 37356 MID Ampthill Detailed view, circa 1960s, showing platform frontage of the main station building.
- 12660 MID Annesley Pre-grouping view, circa 1912.
- 50216 NCC Antrim General view of station, showing up and down platforms, circa 1912 (same as 50217).
- 50217 NCC Antrim General view, circa 1912 (same as 50216).
- 12620 MID Apperley Bridge Pre-grouping view, circa 1912.
- 12621 MID Apperley Bridge Pre-grouping view, circa 1912.
- 37288 MID Appleby View south from footbridge, circa 1970s, showing up and down platforms and station buildings.
- 12716 MID/FUR Arkholme Pre-grouping view, circa 1912, showing exterior of station.
- 12717 MID/FUR Arkholme Pre-grouping view, circa 1912.
- 12539 MID Arley & Fillingley Pre-grouping view, circa 1912.
- 12540 MID Arley & Fillingley General view, LMS period, by Professor Fordyce.
- 12734 MID Armathwaite Pre-grouping view, circa 1912.
- 12531 MID Ashby-de-la-Zouche Pre-grouping view, circa 1912.
- 12532 MID Ashby-de-la-Zouche General view, LMS period, by Professor Fordyce.
- 12533 MID Ashby-de-la-Zouche General view, LMS period, by Professor Fordyce.



64499 Ashchurch c 1955/6

- 36009 MID Ashchurch General view, circa 1960s, looking north-eastwards along the Evesham branch platforms.
- 36010 MID Ashchurch General view, circa 1960s, showing up and down main line platforms, station buildings and footbridge, looking south towards Bristol.

36011 MID Ashchurch General view, circa 1960s, looking southwards along the Evesham branch platforms.

36012 MID Ashchurch General view, circa 1960s, looking southwards along the Tewkesbury branch platform.

36013 MID Ashchurch General view, circa 1960s, showing the main up and down platforms, station buildings and footbridge, looking south towards Bristol.

37378 MID Ashchurch General view, circa 1960s, looking north-westwards along the Tewkesbury branch platform.

37379 MID Ashchurch General view, circa 1950s, showing class '3F' 0-6-0 No.43373 with a local passenger working in the Tewkesbury branch platform.

64497 MID Ashchurch View of north end of station looking northwards with a 4F crossing the mainline on the level crossing, circa 1955/6 (F Saunders)

64498 MID Ashchurch View of station looking northwards from the south end showing the Evesham platform and 4F 44226 on Bristol bound freight, circa 1955/6 (F Saunders)

64499 MID Ashchurch View of down building and canopy, circa 1955/6 (F Saunders)

12502 MID Ashton-under-Hill General view, LMS period, by Professor Fordyce.

36027 MID Ashton-under-Hill General view, circa 1960s, showing up and down platforms, station buildings and footbridge, looking north towards Barnt Green

37367 MID Ashton-under-Hill General view, circa 1960s, showing up and down platforms and station buildings, looking south towards Ashchurch.

12515 MID Ashwell Pre-grouping view, circa 1912.

12516 MID Ashwell Pre-grouping view, circa 1912.

53031 MID/GWR Avonmouth Postcard view, circa 1912, showing "Joint Railway Station, Avonmouth".

57252 MID/GWR Avonmouth General view, circa 1960s, showing platform and station buildings.

57254 MID/GWR Avonmouth General view, circa 1960s, showing platform and station buildings.

57251 MID/GWR Avonmouth Dock General view, circa 1960s, showing up and down platforms and station buildings.

57253 MID/GWR Avonmouth Dock General view, circa 1960s, showing up and down platforms, station buildings and level crossing.

36657 MID Baildon General view, circa 1960s, showing up and down platforms, station buildings and road overbridge.

36658 MID Baildon General view, circa 1960s, showing up and down platforms and part of station building.

12584 MID Bakewell Archive view, circa 1912.

12585 MID Bakewell Pre-grouping view, circa 1912.

12586 MID Bakewell General view, LMS period, by Professor Fordyce.

12587 MID Bakewell General view, LMS period, by Professor Fordyce.

37406 MID Bakewell General view, circa 1960s, showing up and down platforms, station buildings and road overbridge.

50054 NCC Ballycastle Detailed view, showing 2-4-2T No.43 outside shed, circa 1930s.

50219 NCC Ballymena Detailed view of porte cochere and station buildings, circa 1912.

50052 NCC Ballymoney Detailed view, showing 2-4-2T, circa 1930s.

13441 MID Bamford Pre-grouping view, circa 1912.

13442 MID Bamford Pre-grouping view, circa 1912.

- 12718 MID Barnoldswick Pre-grouping view, circa 1912.
 12719 MID Barnoldswick Pre-grouping view, circa 1912.
 12720 MID Barnoldswick Pre-grouping view, circa 1912, showing exterior of station.



13486 Barnt Green, Pre-grouping view

- 13486 MID Barnt Green Pre-grouping view, circa 1912, showing platforms, station buildings and footbridge
 13487 MID Barnt Green Pre-grouping view, circa 1912.
 13488 MID Barnt Green Pre-grouping view, circa 1912.
 13489 MID Barnt Green General view, circa 1960s.
 36000 MID Barnt Green General view, circa 1960s, showing up and down platforms and road overbridge.
 36001 MID Barnt Green General view, circa 1960s, showing up and down Redditch platforms and part of station buildings.
 36002 MID Barnt Green General view, circa 1960s, showing up and down Redditch platforms, with Fowler class '4MT' 2-6-4T No.42416.
 36024 MID Barnt Green General view, circa 1960s, with Fowler class '4MT' 2-6-4T No.42416.
 36025 MID Barnt Green General view, circa 1960s, showing up and down Redditch platforms, station buildings and footbridge.
 36026 MID Barnt Green General view, circa 1960s, showing up and down Redditch platforms.
 12663 MID Barrow Hill Pre-grouping view, circa 1912.
 12457 MID Barrow-on-Soar Pre-grouping view, circa 1912.
 12458 MID Barrow-on-Soar Pre-grouping view, circa 1912.
 12459 MID Barrow-on-Soar Pre-grouping view, circa 1912.
 12472 MID Barton & Walton Pre-grouping view, circa 1912.
 12036 MID Bath Green Park Pre-grouping view, circa 1912, showing exterior of station.

12037 MID Bath Green Park General view, circa 1950s.

12038 MID Bath Green Park Pre-grouping view, circa 1912.

12039 MID Bath Green Park General view, circa 1930s.

12040 MID Bath Green Park General view, 10-05-1958.

12041 MID Bath Green Park General view, 10-05-1958.

12042 MID Bath Green Park General view, 10-05-1958.

12742 MID Bath Green Park Postcard view, circa 1912, showing interior of train shed, looking east towards the terminal buffer stops.

35989 MID Bath Green Park Archive view, circa 1912, showing unidentified S&DJR 4-4-0 (probably No.14 or 15) standing in the "departure" platform.

36063 MID Bath Green Park General view, showing locomotive sheds, circa 1930s.

37498 MID Bath Green Park General view, circa 1960s, looking eastwards along the "arrival platform" towards the train shed.

37861 MID Bath Green Park General view, circa 1966, looking westwards along the "arrival" platform.

37862 MID Bath Green Park General view circa 1948, showing class '4F' 0-6-0 No.4557 in the "departure" platform.

37863 MID Bath Green Park General view, circa 1966, looking east towards the train shed, with an unidentified 'Hymek' class '35' Bo-Bo on the centre roads.

37864 MID Bath Green Park General view, circa 1948, showing class '4F' 0-6-0 No.4557 on the centre roads.

37865 MID Bath Green Park Detailed view, circa 1966, looking eastwards along the "arrival" platform.

37866 MID Bath Green Park General view, circa 1948, looking eastwards along the "arrival" platform, with the "Bonded Warehouse" to the left.

37867 MID Bath Green Park General view, circa 1966, looking westwards from the buffer stops.

37868 MID Bath Green Park General view, circa 1966, looking westwards from the buffer stops, with a Mk.1 full brake standing on the centre roads.

12688 MID Beauchief Pre-grouping view, circa 1912.

12689 MID Beauchief Pre-grouping view, circa 1912.

12690 MID Beauchief Pre-grouping view, circa 1912.

12503 MID Beckford Pre-grouping view, circa 1912.

12504 MID Beckford Pre-grouping view, circa 1912.

12505 MID Beckford General view, circa 1930s.

12506 MID Beckford General view, circa 1930s.

37321 MID Beckford General view, circa 1960s, showing up and down platforms, station buildings and road overbridge, looking south towards Ashchurch.

37322 MID Beckford General view, circa 1960s, showing up and down platforms and station buildings, looking north towards Barnt Green.

13343 MID Bedford Midland Road Pre-grouping view, circa 1912.

13344 MID Bedford Midland Road Pre-grouping view, circa 1912.

36044 MID Bedford Midland Road Archive view, circa 1906, showing Johnson 4-2-2 No.171.

36912 MID Bedford Midland Road Detailed view, circa 1950, showing locomotive depot from the south-east, with ex-SER 4-4-0.

36913 MID Bedford Midland Road Detailed view, circa 1950, showing locomotive depot from the south.

37409 MID Bedford Midland Road General view, circa 1960s, showing platforms and station buildings.

37462 MID Bedford Midland Road General view, circa 1960s, showing terminal platforms and station buildings.

50041 NCC Belfast York Road Detailed view, showing LMS(NCC) railbus No.42, circa 1930s.

50042 NCC Belfast York Road Detailed view, showing Sentinel shunter No.91, on shed circa 1930s.

50095 NCC Belfast York Road Detailed view, circa 1930s, showing class '6' 2-4-0 No.6.

50101 NCC Belfast York Road Detailed view, circa 1920s, showing unidentified 2-4-0T and Sentinel shunter No.91.

50117 NCC Belfast York Road Detailed view, showing diesel railcar No.1.

50118 NCC Belfast York Road Detailed view, showing diesel railcar No.3.

50119 NCC Belfast York Road Detailed view, showing diesel railcar No.1.

50146 NCC Belfast York Road Detailed view, showing 'U2' class 2-6-0 No.77.

50207 NCC Belfast York Road Railcar No.2 outside Belfast York Road shed around 1935, showing original LMS red livery and elevated driving cabs at each end.

50208 NCC Belfast York Road General view, showing Railcar No.2 on shed circa 1935.

12631 MID Bell Busk Pre-grouping view, circa 1912.

13356 MID Belper Pre-grouping view, circa 1912.

13357 MID Belper Pre-grouping view, circa 1912.

13358 MID Belper Pre-grouping view, circa 1912.

13359 MID Belper General view, circa 1960, by J.L.Smith.

13360 MID Belper General view, circa 1960, by J.L.Smith.

36653 MID/NER Ben Rhydding General view, circa 1970s, showing up and down platforms and part of footbridge.

36654 MID/NER Ben Rhydding General view, circa 1970s, showing up and down platforms and footbridge.

12498 MID Bengeworth General view, LMS period, by Professor Fordyce.

37485 MID Bengeworth Post-closure view, circa 1970, showing abandoned platforms (closed 1953).

37269 MID Bentham General view, circa 1972, showing up and down platforms and station buildings.

37270 MID Bentham General view, circa 1972, showing up and down platforms and station buildings, framed by bridge arch.

13591 MID/GWR Berkeley Pre-grouping view, circa 1912.

13592 MID/GWR Berkeley General view, circa 1960s.

37347 MID/GWR Berkeley Archive view, circa 1900, showing Severn & Wye 0-6-0T *Friar Tuck*.

54392 MID/GWR Berkeley General view, circa 1962, details of the main station building.

56600 MID/GWR Berkeley General view, circa 1960s, showing up and down platforms and station buildings with one track removed.

36053 MID Berkeley Road General view, 27-06-1954, showing Severn & Wye platforms, looking towards Gloucester.

36057 MID Berkeley Road General view, 27-06-1954, showing rear elevation of main station building.

37348 MID Berkeley Road General view, circa 1960s, showing up and down main line platforms, looking north towards Birmingham.

37349 MID Berkeley Road General view, circa 1960s, showing up and down main line platforms.

37350 MID Berkeley Road General view, circa 1960s, showing main up and down platforms, part of station buildings, and road overbridge, looking south towards Bristol.

37351 MID Berkeley Road General view, circa 1960s, showing main up and down platforms, station buildings and footbridge.

37280 MID Bingley General view, circa 1972, showing up and down platforms and part of station building.

37397 MID Bingley General view, circa 1960s, showing up and down platforms, station buildings and footbridge.

13110 MID/LNWR Birmingham New Street Pre-grouping view, circa 1912.

13111 MID/LNWR Birmingham New Street Pre-grouping view, circa 1912.

13112 MID/LNWR Birmingham New Street Pre-grouping view, circa 1912.

13113 MID/LNWR Birmingham New Street Pre-grouping view, circa 1912.

13114 MID/LNWR Birmingham New Street Pre-grouping view, circa 1912.

13115 MID/LNWR Birmingham New Street Pre-grouping view, circa 1912.

13116 MID/LNWR Birmingham New Street Pre-grouping view, circa 1912.

13117 MID/LNWR Birmingham New Street Pre-grouping view, circa 1912.

13118 MID/LNWR Birmingham New Street Pre-grouping view, circa 1912.

13119 MID/LNWR Birmingham New Street Pre-grouping view, circa 1912.

12738 MID Bitton Pre-grouping view, circa 1912.

12739 MID Bitton Pre-grouping view, circa 1912, showing exterior of station.

12740 MID Bitton Pre-grouping view, 12-04-1906.

12741 MID Bitton Pre-grouping view, circa 1912.

35987 MID Bitton General view, circa 1960s, showing up and down platforms and station buildings.

35988 MID Bitton General view, circa 1960s, showing up and down platforms and station buildings, looking south towards Bath.

35889 MID/LTSR Black Horse Road General view, circa 1960s, showing up and down platforms, station buildings and overbridge.

35890 MID/LTSR Black Horse Road General view, circa 1960s, showing up and down platforms and station buildings.

13497 MID Blackwell Pre-grouping view, circa 1912.

36056 MID Blackwell General view, circa 1960s, showing up and down platforms and station buildings, with class '9F' 2-10-0 on freight working.

37380 MID Blackwell General view, circa 1960s, showing up and down platforms and station buildings.

37381 MID Blackwell General view, circa 1960s, showing up and down platforms and station buildings, looking south towards Bristol.

37382 MID Blackwell General view, circa 1960s, showing up and down platforms, station buildings and signal cabin, looking south towards Bristol.

13408 MID Bleasby Pre-grouping view, circa 1912.

13409 MID Bleasby Pre-grouping view, circa 1912.

13410 MID Bleasby Pre-grouping view, circa 1912.

37211 MID/NER Bolton-on-Deerne Detailed view, circa 1970s, showing main station buildings.

37212 MID/NER Bolton-on-Deerne Platform end view, circa 1970s.

12463 MID Borrowash Pre-grouping view, circa 1912.

12464 MID Borrowash Pre-grouping view, circa 1912.

13476 MID Bourneville Pre-grouping view, circa 1912.

13477 MID Bourneville Pre-grouping view, circa 1912.

13478 MID Bourneville Pre-grouping view, circa 1912.

13479 MID Bourneville General view, circa 1960s.

36663 MID Bradford Forster Square General view, circa 1970s, looking along Platform 1.

36664 MID Bradford Forster Square General view, circa 1970s, showing an unidentified Metro-Cammell class '101' unit in Platform 2.
 13500 MID Bredon Pre-grouping view, circa 1912.
 13501 MID Bredon Pre-grouping view, circa 1912.
 37368 MID Bredon General view, circa 1950s, showing up and down platforms and station buildings.
 37369 MID Bredon General view, circa 1950s, showing up and down platforms, station buildings and road overbridge.
 37370 MID Bredon General view, circa 1950s, showing up and down platforms, station buildings and road bridge.
 12551 MID Brighton Road Pre-grouping view, circa 1912, with class '3' 0-6-0 No.3694.
 12552 MID Brighton Road Pre-grouping view, circa 1912, with Johnson class '2' 4-4-0 No.343.
 12553 MID Brighton Road Pre-grouping view, circa 1912, with 0-4-4T No.1324.
 13376 MID Brightside Pre-grouping view, circa 1912.
 53000 MID/GWR Bristol Temple Meads General view, circa 1948, showing west end of station, with unidentified 'Castle' class 4-6-0.
 53001 MID/GWR Bristol Temple Meads Archive view, circa 1912, showing east end of station.
 53002 MID/GWR Bristol Temple Meads Platform view, circa 1959.
 53003 MID/GWR Bristol Temple Meads General view, circa 1960s, showing west end of station.
 53004 MID/GWR Bristol Temple Meads General view, circa 1930s, with 'Castle' class 4-6-0 and 'Bulldog' class 4-4-0.



13490 Bromsgrove, Pre-grouping view

13490 MID Bromsgrove Pre-grouping view, circa 1912, showing up and down platforms and station buildings, looking north towards Birmingham.

13491 MID Bromsgrove Pre-grouping view, circa 1912.
 13492 MID Bromsgrove Pre-grouping view, circa 1912.
 13493 MID Bromsgrove Pre-grouping view, circa 1912.
 36029 MID Bromsgrove General view, circa 1960s, showing up and down platforms, station buildings and signal cabin, looking north towards Birmingham.
 37386 MID Bromsgrove General view, circa 1960s, showing up and down platforms, station buildings and footbridge, looking south towards Bristol.
 12519 MID Brooksby Pre-grouping view, circa 1912.
 12483 MID Broom Junction Pre-grouping view, circa 1912 (same as No.12484).
 12484 MID Broom Junction Pre-grouping view, circa 1912 (same as No.12483 but better negative).
 12485 MID Broom Junction Pre-grouping view, circa 1912.
 12486 MID Broom Junction Pre-grouping view, circa 1912.
 12487 MID Broom Junction General view, LMS period, by Professor Fordyce.
 12490 MID Broom Junction Pre-grouping view, circa 1912.
 36030 MID Broom Junction Detailed view, circa 1912, showing Broom Junction South signal cabin.
 36926 MID Broom Junction Detailed view, circa 1962, showing Broom North signal cabin.
 37376 MID Broom Junction General view, circa 1950s, showing island platform and station buildings, looking north towards Barnt Green.
 37377 MID Broom Junction General view, circa 1950s, showing island platform, station buildings and road bridge, looking south towards Ashchurch.
 12562 MID Broughton Astley Pre-grouping view, circa 1912, showing exterior of station.
 12416 MID Brownhills Pre-grouping view, circa 1912.
 37447 MID Brynamman East Post-closure view, circa 1960s, showing derelict platform (closed 1950).
 37448 MID Brynamman East Post-closure view, circa 1960s, showing derelict facilities.
 37301 MID Buckden General view, circa 1959, showing single platform, station building and signal box, looking east towards Huntingdon.
 37302 MID Buckden General view, circa 1959, showing details of main station building, looking east towards Huntingdon.
 12657 MID Bulwell Pre-grouping view, circa 1912.
 12658 MID Bulwell Pre-grouping view, circa 1912 (same as 12657, better negative).
 36655 MID/NER Burley-in-Wharfedale General view, circa 1970s, showing up and down platforms, waiting shelters and footbridge.
 36656 MID/NER Burley-in-Wharfedale General view, circa 1970s, showing up and down platforms, waiting shelters and footbridge.
 13401 MID Burton Joyce Pre-grouping view, circa 1912.
 13473 MID Burton-on-Trent Pre-grouping view, circa 1912.
 12677 MID Butterley Pre-grouping view, circa 1912.
 12678 MID Butterley Pre-grouping view, circa 1912.
 13225 MID Buxton General view, circa 1930s.
 13226 MID Buxton General view, circa 1930s.
 13227 MID Buxton General view, 31-07-1962, showing exterior of station.
 37416 MID Buxton Detailed view, circa 1960s, showing the Midland train shed.

12618 MID Calverley & Rodley Pre-grouping view, circa 1912.
 12619 MID Calverley & Rodley Pre-grouping view, circa 1912.

37513 MID Cam General view, circa 1962, showing level crossing, gate cabin and end gable of station building.

37514 MID Cam General view, circa 1962, showing single platform, station building and goods shed, looking north towards Coaley Junction.

37515 MID Cam General view, circa 1962, showing single platform and station building, looking south towards Dursley.

12412 MID Camden Road Pre-grouping view, circa 1912.

36060 MID Camden Road View from passing train, circa 1950s.

36061 MID Camden Road General view, circa 1960s, showing up and down platforms and station buildings.

37505 MID Cardington General view, circa 1960s, showing up and down platforms and station buildings, with one track removed.

37506 MID Cardington General view, circa 1960s, showing up and down platforms and station buildings, with one track removed.

39633 MID Cardington Detailed view, 09-04-1940, showing 2-6-2T No.165 after derailment.

39634 MID Cardington Detailed view, 09-04-1940, showing 2-6-2T No.165 after derailment.

12550 MID Castle Bromwich Pre-grouping view, circa 1912.

12708 MID Caton Pre-grouping view, circa 1912, showing up and down platforms, station buildings and level crossing, looking east towards Leeds.

12709 MID Caton Pre-grouping view, circa 1912.

36043 MID Chapel-en-le-Frith General view, circa 1960s, showing up and down platforms and station buildings, with SLS special.

13377 MID Chapeltown Pre-grouping view, circa 1912.

13378 MID Chapeltown Pre-grouping view, circa 1912.

13379 MID Chapeltown Pre-grouping view, circa 1912.

13521 MID Charfield Postcard view, circa 1912, showing up and down platforms, station buildings and good shed, looking north towards Birmingham.

37345 MID Charfield General view, circa 1960s, showing up and down platforms and station buildings, looking south towards Bristol.

37346 MID Charfield General view, circa 1960s, showing up and down platforms, station buildings and road overbridge, looking north towards Birmingham.

12697 MID Cheadle Heath Pre-grouping view, circa 1912.

36041 MID Cheadle Heath Panoramic view of platforms and station buildings, circa 1920s.

36015 MID Chellaston & Swarkestone Postcard view, circa 1912, showing up and down platforms and station buildings.

13494 MID Cheltenham Spa Lansdown General view, circa 1960s.

13495 MID Cheltenham Spa Lansdown General view, circa 1960s.

13496 MID Cheltenham Spa Lansdown General view, circa 1960s, showing exterior of station.

36019 MID Cheltenham Spa Lansdown General view, circa 1960s, showing up and down platforms, station buildings and signal box, looking south towards Bristol.

36020 MID Cheltenham Spa Lansdown General view, circa 1960s, showing up and down platforms and station buildings, looking north towards Birmingham.

36021 MID Cheltenham Spa Lansdown General view, circa 1960s, showing up and down platforms, station buildings and footbridge, looking north towards Birmingham.

36022 MID Cheltenham Spa Lansdown General view, circa 1960s, showing up and down platforms, station buildings and footbridge, looking north along Platform 1.

36023 MID Cheltenham Spa Lansdown General view, circa 1960s, showing up and down platforms and station buildings, looking south along Platform 1.

13364 MID Chesterfield Pre-grouping view, circa 1912.

13365 MID Chesterfield Pre-grouping view, circa 1912.
 13366 MID Chesterfield Pre-grouping view, circa 1912, showing exterior of station.
 13367 MID Chesterfield Pre-grouping view, circa 1912.
 13368 MID Chesterfield Pre-grouping view, circa 1912 (duplicate of 13364).
 13369 MID Chesterfield Pre-grouping view, circa 1912, showing exterior of station.
 37458 MID Chesterfield Midland General view, circa 1960s, showing up and down platforms and station buildings.
 37459 MID Chesterfield Midland General view, circa 1960s, showing up and down platforms and station buildings.
 12432 MID Chiltern Green Pre-grouping view, circa 1912.
 13447 MID Chinley Pre-grouping view, circa 1912.
 13448 MID Chinley Pre-grouping view, circa 1912.
 13449 MID Chinley Pre-grouping view, circa 1912.
 13450 MID Chinley Pre-grouping view, circa 1912.
 13505 MID/GWR Churchdown Pre-grouping view, circa 1912.
 13506 MID/GWR Churchdown Pre-grouping view, circa 1912.
 13507 MID/GWR Churchdown Pre-grouping view, circa 1912.
 13508 MID/GWR Churchdown Pre-grouping view, circa 1912.
 36017 MID/GWR Churchdown View from bridge, 19-07-1952, showing island platforms and buildings.
 37499 MID/GWR Churchdown General view, circa 1960s, showing island platforms, waiting shelter and signal box.
 56960 MID/GWR Churchdown General view, circa 1960s, showing island platforms and station buildings.
 54390 MID/GWR Cinderford General view, circa 1960s, showing single platform and station building.
 57346 MID/GWR Cinderford General view, circa 1950, showing '14XX' class 0-4-2T No.1409 alongside single platform.
 57347 MID/GWR Cinderford General view, circa 1960, showing single platform, station building and part of goods shed, looking towards the terminal buffer stops.
 57348 MID/GWR Cinderford Postcard view, circa 1912, showing single platform, station building, signal box and goods shed.
 57349 MID/GWR Cinderford Postcard view, circa 1913, showing passenger station and goods yard, with '2021' class 0-6-0ST.
 57350 MID/GWR Cinderford General view, circa 1960, showing '54XX' class 0-6-0PT, station building and goods shed.
 57351 MID/GWR Cinderford Postcard view, circa 1912, showing single platform, station building and goods shed from The Railway Hotel.
 57352 MID/GWR Cinderford Postcard view, circa 1912, showing single platform, station building and goods shed.
 57353 MID/GWR Cinderford Postcard view, circa 1912, showing useful detail of station building.
 57354 MID/GWR Cinderford Postcard view, circa 1912, showing single platform, station building and goods shed.
 57355 MID/GWR Cinderford Postcard view, circa 1912, showing single platform, station building and goods shed, with '2021' class 0-6-0ST approaching the terminus.
 57356 MID/GWR Cinderford Postcard view, circa 1912, showing single platform, station building and goods shed, looking towards the terminal buffer stops.

57357 MID/GWR Cinderford Postcard view, circa 1912, showing signal box, goods shed and station building, with '2021' class 0-6-0ST shunting a Severn & Wye goods service.

13397 MID Clapham (Yorks) Pre-grouping view, circa 1912, showing the main station building, looking east towards Leeds.

13398 MID Clapham (Yorks) Detailed view, circa 1912, showing up platform and main station buildings.

37252 MID Clapham (Yorks) General view, circa 1960s, showing up and down platforms, station buildings and footbridge, looking west towards Morecambe.

37253 MID Clapham (Yorks) General view, circa 1972, showing up and down platforms, part of station building, and footbridge, looking west towards Morecambe.

37254 MID Clapham (Yorks) General view, circa 1972, showing up and down platforms and station buildings, looking east towards Leeds.

12686 MID Clay Cross Pre-grouping view, circa 1912.

12687 MID Clay Cross Pre-grouping view, circa 1912.

13504 MID Cleeve General view, LMS period, by Professor Fordyce.

37364 MID Cleeve General view, circa 1960s, showing signal cabin and goods yard.

57249 MID/GWR Clifton Down General view, circa 1960s, showing up and down platforms, station buildings and footbridge.

57250 MID/GWR Clifton Down General view, circa 1960s, showing up and down platforms, station buildings and footbridge.

12666 MID Clowne Pre-grouping view, circa 1912.

12653 MID Clydach-on-Tawe South Pre-grouping view, circa 1912.

12654 MID Clydach-on-Tawe South Pre-grouping view, circa 1912.

37451 MID Clydach-on-Tawe South Post-closure view, circa 1960s, showing up and down platforms and station buildings (closed 1950).

37452 MID Clydach-on-Tawe South Post-closure view, circa 1960s, showing up and down platforms and station buildings.

13517 MID Coaley Junction Pre-grouping view, circa 1912.

13518 MID Coaley Junction General view, circa 1960s, showing up and down platforms and station buildings, looking south towards Bristol.

13519 MID Coaley Junction Detailed view, circa 1960s, showing main station building, goods shed and Dursley branch platform.

13520 MID Coaley Junction General view, 08-09-1962.

37474 MID Coaley Junction General view, circa 1960s, looking southwards along the Dursley branch platform.

37476 MID Coaley Junction General view, circa 1960s, showing main up and down platforms, looking south towards Bristol.

37477 MID Coaley Junction General view, circa 1960s, showing Dursley branch platform and station buildings, looking southwards.

12528 MID Coalville Pre-grouping view, circa 1912.

12529 MID Coalville Pre-grouping view, circa 1912.

12530 MID Coalville Pre-grouping view, circa 1912, showing exterior of station.

12682 MID Codnor Park Pre-grouping view, circa 1912.

56983 MID/GWR Coleford Post-closure view, circa 1960s, showing single platform and station building.

56984 MID/GWR Coleford Postcard view, circa 1912, showing up and down platforms, station building and level crossing.

56985 MID/GWR Coleford Postcard view, circa 1912, showing single platform, station building and water tower.

56994 MID/GWR Coleford General view, circa 1960s, showing single platform and station building after closure.

12469 MID Coleshill Postcard view, circa 1912, showing single platform, station building and goods siding.

12470 MID Coleshill Pre-grouping view, circa 1912.

12471 MID Coleshill General view, circa 1930s.

13415 MID Collingham Pre-grouping view, circa 1912.

13416 MID Collingham Pre-grouping view, circa 1912.

37468 MID Collingham General view, circa 1960s, showing up and down platforms, station buildings, level crossing and signal box.

37469 MID Collingham General view, circa 1960s, showing up and down platforms and part of station building from the level crossing.

13743 MID/LNWR Colne Pre-grouping view, circa 1912.

12629 MID Cononley Pre-grouping view, circa 1912.

12630 MID Cononley Pre-grouping view, circa 1912.

12467 MID Corby – see Weldon & Corby page 42

12479 MID Coughton Pre-grouping view, circa 1912.

12480 MID Coughton Pre-grouping view, circa 1912.

37357 MID Coughton General view, circa 1960s, showing single platform and station building.

37358 MID Coughton General view, circa 1952, showing single platform and station building, with class '4MT' 2-6-0 No.43013. alongside.

37359 MID Coughton General view, circa 1952, showing single platform, station building and road overbridge.

37360 MID Coughton General view, circa 1952, with a passenger train alongside the single platform.

37361 MID Coughton General view, circa 1960s, showing single platform, station building and road overbridge.

12563 MID Countesthorpe Postcard view, circa 1912, station building, signal box and staggered platforms with intervening level crossing, looking south towards Rugby.

12564 MID Countesthorpe Pre-grouping view, circa 1912.

35976 MID Countesthorpe Post-closure view, circa 1960s, showing the down platform after removal of the track.

35977 MID Countesthorpe Post-closure view, circa 1960s, looking south towards Rugby.

12672 MID Coxbench General view, LMS period, by Professor Fordyce.

12445 MID Cranford Pre-grouping view, circa 1912.

12632 MID Credenhill Pre-grouping view, circa 1912.

21101 MID Credenhill General view, circa 1962, showing the single platform and station building, looking towards Hereford.

21102 MID Credenhill General view, circa 1962, showing the single platform, station building and road bridge, looking towards Brecon.

37509 MID Cricklewood General view, circa 1960s, showing up and down main line and suburban platforms, and station buildings.

51929 MID Cricklewood General view, circa 1962, showing up and down fast and slow platforms, and station buildings.

13431 MID Cromford Pre-grouping view, circa 1912.

13432 MID Cromford Pre-grouping view, circa 1912.

13433 MID Cromford General view, circa 1960s.

13434 MID Cromford General view, circa 1960s.

12728 MID Crosby Garrett Pre-grouping view, circa 1912.

12669 MID Crosshill & Codnor Pre-grouping view, circa 1912.
 12670 MID Crosshill & Codnor Pre-grouping view, circa 1912.
 35797 MID/GER Crouch Hill General view, circa 1960s, showing up and down platforms, station buildings and road overbridge.
 51923 MID/GER Crouch Hill Detailed view, circa 1972, showing street frontage of main station building.
 12606 MID Cudworth Pre-grouping view, circa 1912.
 12607 MID Cudworth Pre-grouping view, circa 1912.
 12608 MID Cudworth Pre-grouping view, circa 1912.
 12731 MID Culgaith Pre-grouping view, circa 1912.
 37294 MID Culgaith Platform end view, circa 1972, showing level crossing and Midland-type signal cabin.
 50215 NCC Cullybackey Detailed view of main station building, circa 1912.
 12735 MID Cumwhinton General view by Professor Fordyce.
 37446 MID Cwmllynfell General view, circa 1960s, showing single platform and station building.
 37445 MID Cymlllynfell Post-closure view, circa 1960s, showing single platform, station building and road overbridge (closed 1950).

12754 MID Damens Pre-grouping view, circa 1912.
 12604 MID Darfield Pre-grouping view, circa 1912.
 12605 MID Darfield Pre-grouping view, circa 1912.
 12582 MID Darley Dale General view, LMS period, by Professor Fordyce.
 13498 MID Defford Pre-grouping view, circa 1912.
 13502 MID Defford Pre-grouping view, circa 1912.
 13503 MID Defford Pre-grouping view, circa 1912.
 37309 MID Defford General view, circa 1960s, showing up and down platforms and station buildings.
 37310 MID Defford General view, circa 1960s, showing up and down platforms, station buildings and road overbridge.
 37311 MID Defford General view, circa 1960s, showing up and down platforms and station buildings.
 37312 MID Defford General view, circa 1960s, showing up and down platforms and road overbridge.
 12674 MID Denby Pre-grouping view, circa 1912.
 12675 MID Denby General view, circa 1930s.
 12724 MID Dent Pre-grouping view, circa 1912.
 12725 MID Dent General view, circa 1930s.
 37286 MID Dent General view, circa 1960s, showing up and down platforms, station buildings and road overbridge, looking north towards Carlisle.
 13350 MID Derby Midland, Pre-grouping view, circa 1912.
 13351 MID Derby Midland, Pre-grouping view, circa 1912.
 13352 MID Derby Midland, General view, circa 1930s.
 13353 MID Derby Midland, General view, circa 1930s.
 37390 MID Derby Midland, General view, circa 1960s, showing platforms and station buildings.
 37391 MID Derby Midland, General view, circa 1960s, showing platforms and station buildings.
 37392 MID Derby Midland, General view, circa 1960s, showing platforms and station buildings.
 12440 MID Desborough & Rothwell Pre-grouping view, circa 1912.



12257 Desford, Pre-grouping view

12527 MID Desford Pre-grouping view, circa 1912, showing up and down platforms, station buildings and level crossing.

12699 MID Didsbury Pre-grouping view, circa 1912.

12700 MID Didsbury Pre-grouping view, circa 1912, showing exterior of station.

12701 MID Didsbury Pre-grouping view, circa 1912.

11309 SYJ Dinnington & Loughton Pre-grouping view, circa 1912.

11310 SYJ Dinnington & Loughton Pre-grouping view, circa 1912.

12685 MID Doe Hill Pre-grouping view, circa 1912, showing exterior of station.

12424 MID/LNWR Donisthorpe Pre-grouping view, circa 1912.

13372 MID Dore & Totley Pre-grouping view, circa 1912.

13373 MID Dore & Totley Pre-grouping view, circa 1912.

13374 MID Dore & Totley Pre-grouping view, circa 1912.

39632 MID Dore & Totley Archive view, 09-10-1907, showing 2-4-0 locomotive damaged in accident.

12462 MID Draycott Pre-grouping view, circa 1912.

36055 MID Droitwich Road General view, circa 1920s (?), showing former station building (closed 1855).

13370 MID Dronfield Pre-grouping view, circa 1912.

13371 MID Dronfield Pre-grouping view, circa 1912.

12758 MID Dudbridge Pre-grouping view, circa 1912.

12759 MID Dudbridge Pre-grouping view, circa 1912.

12760 MID Dudbridge Pre-grouping view, circa 1912.

12761 MID Dudbridge General view, LMS period, by Professor Fordyce.

37491 MID Dudbridge Post-closure view, circa 1960s, showing up and down platforms and station buildings, with one track removed (closed 1947).

37492 MID Dudbridge Post-closure view, circa 1960s, showing station buildings.
 12414 MID Dudding Hill Pre-grouping view, circa 1912.
 36042 MID Dudding Hill Detailed view, circa 1960, showing Neasden Junction signal cabin, and connection to nearby Great Central main line.
 37412 MID Dudding Hill Post-closure view, circa 1950s, showing former station building (closed 1902).
 13354 MID Duffield Pre-grouping view, circa 1912.
 13355 MID Duffield Pre-grouping view, circa 1912.
 12782 MID Dursley Pre-grouping view, circa 1912.
 12783 MID Dursley General view, circa 1960s.
 37484 MID Dursley General view, circa 1960, showing the single platform and station building, looking north towards Coaley Junction.
 37516 MID Dursley General view, circa 1962, showing platform, loading bay and station buildings.
 37517 MID Dursley Detailed study of station building, circa 1962, looking towards the buffer stops.
 37518 MID Dursley General view, circa 1962, looking northwards along the platform towards Coaley Junction.

12713 MID Earby Pre-grouping view, circa 1912.
 12714 MID Earby Pre-grouping view, circa 1912.
 12638 MID Eardisley General view, circa 1960s.
 12639 MID Eardisley General view, LMS period, by Professor Fordyce.
 21107 MID Eardisley General view, circa 1962, showing up and down platforms, station buildings and road bridge, looking towards Hereford.
 21108 MID Eardisley General view, circa 1962, showing up and down platforms and station buildings, looking towards Brecon.
 13499 MID Eckington Pre-grouping view, circa 1912.
 36014 MID Eckington General view, circa 1960s, showing up and down platforms and station buildings.
 37479 MID Eckington General view, circa 1960s, showing up and down platforms, station buildings and level crossing.
 12693 MID Eckington & Renishaw Pre-grouping view, circa 1912.
 36016 MID Eckington & Renishaw Archive view, circa 1912, showing up and down platforms, station buildings and road overbridge.
 37433 MID Eckington & Renishaw General view, circa 1960s, showing up and down platforms and road bridge.
 37434 MID Eckington & Renishaw Post-closure view, circa 1960s, showing up and down platforms and road overbridge (closed 1951).
 37435 MID Eckington & Renishaw General view, circa 1960s, showing up and down platforms and road overbridge.
 13446 MID Edale Pre-grouping view, circa 1912.
 36914 MID Edmondthorpe & Wymondham View from bridge, circa 1950s, showing up and down platforms, station buildings and signal box.
 12573 MID Elmtton & Creswell Pre-grouping view, circa 1912.
 12574 MID Elmtton & Creswell Pre-grouping view, circa 1912.
 12575 MID Elmtton & Creswell Pre-grouping view, showing MR ambulance class 1905.
 13380 MID Elsecar & Hoyland Pre-grouping view, circa 1912.

- 13381 MID Elsecar & Hoyland Pre-grouping view, circa 1912.
- 13382 MID Elsecar & Hoyland Pre-grouping view, circa 1912.
- 12715 MID Elslack Pre-grouping view, circa 1912.
- 12493 MID Evesham Pre-grouping view, circa 1912.
- 12494 MID Evesham Pre-grouping view, circa 1912.
- 12495 MID Evesham Pre-grouping view, circa 1912.



13471 Evesham, c1962

- 12496 MID Evesham General view, LMS period, by Professor Fordyce.
- 12497 MID Evesham General view, circa 1960s.
- 13471 MID Evesham General view, circa 1962, Fowler 2-6-4T 42326 in station with train, by J.L.Smith.
- 37332 MID Evesham General view, circa 1960s, showing up and down platforms, station buildings and footbridge.
- 37333 MID Evesham Post-closure view, circa 1960s, showing up and down platforms and station buildings after removal of the track.
- 37334 MID Evesham View from bridge, circa 1960s, showing up and down platforms, station buildings and footbridge.
- 37335 MID Evesham Post-closure view, circa 1960s, showing abandoned platforms.

- 12568 MID Famsfield? Pre-grouping view, circa 1912.
- 12569 MID Famsfield? Pre-grouping view, circa 1912.
- 11352 MID/NER Ferrybridge Pre-grouping view, circa 1912.
- 12743 MID Fishponds Pre-grouping view, circa 1912, showing island platform and station building.

12744 MID Fishponds Pre-grouping view, circa 1912, showing main up and down platforms and station buildings.

35983 MID Fishponds General view, circa 1960s, showing up and down platforms, station buildings and road overbridge.

35984 MID Fishponds General view, circa 1960s, showing up and down platforms and station buildings.

35985 MID Fishponds Detailed study of signal cabin, circa 1962.

13475 MID Fiveways Pre-grouping view, 27-05-1957.

13339 MID Flitwick Pre-grouping view, circa 1912.

13340 MID Flitwick Pre-grouping view, circa 1912.

13341 MID Flitwick General view, circa 1960s.

13342 MID Flitwick General view, circa 1960s.

12542 MID Forge Mills Pre-grouping view, circa 1912.

13516 MID Frocester Pre-grouping view, circa 1912.

37327 MID Frocester General view, circa 1960s, showing up and down platforms, station buildings, signal box and goods shed, looking north towards Birmingham.

37328 MID Frocester General view, circa 1960s, showing up and down platforms, station buildings and road overbridge, looking north towards Birmingham.

13389 MID Gargrave Pre-grouping view, circa 1912.

13390 MID Gargrave General view, circa 1930s.

37272 MID Gargrave View from bridge, circa 1972, showing up and down platforms.

37273 MID Gargrave General view, circa 1972, showing up and down platforms, part of station buildings, and road overbridge.

37274 MID Gargrave View from road bridge, circa 1972, showing up and down platforms.

37275 MID Gargrave General view, circa 1972, showing main station buildings and road overbridge.

37276 MID Gargrave General view, circa 1972, showing up and down platforms and station buildings.

12726 MID Garsdale Postcard view, circa 1912, showing up, down and Hawes branch platforms, looking north towards Carlisle.

37287 MID Garsdale General view, circa 1960s, showing main up and down platforms, station buildings and Midland style signal cabin, looking south towards London.

37255 MID Giggleswick General view, circa 1972, showing up and down platforms and station buildings, looking east towards Leeds.

37256 MID Giggleswick General view, circa 1972, showing up and down platforms and station buildings, looking west towards Morecambe.

12651 MID Glais Pre-grouping view, circa 1912.

12652 MID Glais Pre-grouping view, circa 1912.

12664 MID Glapwell Pre-grouping view, circa 1912.

12665 MID Glapwell General view, circa 1925.

21113 MID Glasbury-on-Wye General view, circa 1962, showing platform and station building, looking towards Hereford.

21114 MID Glasbury-on-Wye General view, circa 1962, showing the single platform and station building, looking towards Brecon.

12770 MID Glenfield Pre-grouping view, circa 1912.

12771 MID Glenfield Pre-grouping view, circa 1912.

37467 MID Glenfield General view, circa 1960s, showing single platform, station building and level crossing.

13509 MID Gloucester Pre-grouping view, circa 1912.

13510 MID Gloucester Pre-grouping view, circa 1912.

13511 MID Gloucester Pre-grouping view, circa 1912.

13512 MID Gloucester General view, circa 1960s.

37383 MID Gloucester Platform view, circa 1960s, looking east towards Tramway Junction.

37384 MID Gloucester Platform view, circa 1960s, looking south towards Bristol.

37385 MID Gloucester General view, circa 1960s, showing platforms and station buildings, looking north-east towards Birmingham.

37299 MID Grafham General view, circa 1959, showing single platform and station building, looking east towards Huntingdon.

37314 MID Grassington General view, circa 1960s, showing single platform and station building, looking north towards the terminal buffer stops.

1664 MID Grassington View from buffer stops, 11-04-53 (D Cullum)

1665 MID Grassington View of layout, 11-04-53 (D Cullum)

1666 MID Grassington Midland Railway cast iron trespass notice, 11-04-53 (D Cullum)

12443 MID Great Glen Pre-grouping view, circa 1912.

12444 MID Great Glen Pre-grouping view, circa 1912.

51920 MID Great Glen Archive view, circa 1912, showing class '3' 4-4-0 No.758 with a main line passenger working.

12588 MID Great Longstone Pre-grouping view, circa 1912.

12535 MID Gresley Pre-grouping view, circa 1912.

13437 MID Grindleford Pre-grouping view, circa 1912.

13438 MID Grindleford Pre-grouping view, circa 1912.

13439 MID Grindleford Pre-grouping view, circa 1912.

36659 MID Guiseley General view, circa 1970s, showing up and down platforms and footbridge.

36660 MID Guiseley General view, circa 1970s, showing up and down platforms.

36908 MID Guiseley General view, circa 1970s, showing up and down platforms, goods shed and signal box.

37443 MID Gwys Post-closure view, circa 1960s, showing single platform (closed 1950).

37444 MID Gwys Post-closure view, circa 1960s, showing single platform.

56602 MID/GWR Halesowen General view, circa 1960s, showing up and down platforms, signal box and part of station buildings, with Collett '57XX' class 0-6-0PT No.3658.

56603 MID/GWR Halesowen Postcard view, circa 1912, showing up and down platforms and station buildings, with GWR railmotor.

56604 MID/GWR Halesowen General view, circa 1960s, showing up and down platforms, signal box and part of station buildings, with '57XX' class 0-6-0PT No.3658.

56607 MID/GWR Halesowen View from bridge, circa 1960s, showing up and down platforms and station buildings, looking towards Old Hill.

56748 MID/GWR Halesowen Postcard view, circa 1912, showing up and down platforms, station buildings and footbridge.

56749 MID/GWR Halesowen Postcard view, circa 1912, showing up and down platforms and part of station buildings, with local passenger train.

57310 MID/GWR Halesowen Postcard view, circa 1912, showing up and down platforms, station buildings and footbridge.

12710 MID Halton Pre-grouping view, circa 1912.

13513 MID Haresfield Pre-grouping view, circa 1912.

13514 MID Haresfield Pre-grouping view, circa 1912.

35999 MID Haresfield General view, circa 1960s, showing Standish Junction.

37387 MID Haresfield General view, circa 1960s, showing up and down platforms and station buildings.

37486 MID Haresfield General view, circa 1960s, showing up and down platforms and timber station buildings.

13338 MID Harlington General view, circa 1960s.

13331 MID Harpenden Pre-grouping view, circa 1912.

13332 MID Harpenden Pre-grouping view, circa 1912.

13333 MID Harpenden General view, circa 1930s.

13334 MID Harpenden General view, circa 1930s.

37487 MID Harpenden Central General view, circa 1960s, showing up and down main line and suburban platforms, station buildings and footbridge.

37488 MID Harpenden Central General view, circa 1960s, showing up and down main line and suburban platforms, station buildings and goods shed.

51927 MID/GER Harringay Stadium General view, circa 1972, showing up and down platforms and station buildings.

1668 MID Harringworth Viaduct General view, 13-04-53 (D Cullum)

12491 MID Harvington Pre-grouping view, circa 1912.

12492 MID Harvington General view, LMS period, by Professor Fordyce.

37480 MID Harvington General view, circa 1960s, showing single platform, station building and road overbridge, looking south towards Ashchurch.

37481 MID Harvington Detailed view, circa 1960s, showing main station building, looking north towards Barnt Green.

37411 MID Hassop View from bridge, circa 1960s, showing up and down platforms and former station building (closed 1942).

13440 MID Hathersage Pre-grouping view, circa 1912.

12413 MID Haverstock Hill Pre-grouping view, circa 1912.

11426 MID/NER Hawes Postcard view, circa 1912, showing up and down platforms, station buildings and road overbridge, looking west towards Garsdale (similar to 11427).

11427 MID/NER Hawes General view, circa 1912, showing up and down platforms, station buildings and road overbridge (similar to 11426).

11428 MID/NER Hawes Detailed view, circa 1912, showing main station building, with goods shed and yard to the rear.

12755 MID Haworth Pre-grouping view, circa 1912.

37428 MID Haworth General view, circa 1971, showing single platform and station building.

39641 MID Haworth Early preservation view, circa 1968, showing 'J72' 0-6-0T No.69023 approaching the station.

39642 MID Haworth Early preservation view, circa 1968, showing 0-6-0ST in goods yard.

39643 MID Haworth Early preservation view, circa 1968, showing Barton Wright 0-6-0 No.52044 (as 957).

39644 MID Haworth Early preservation view, circa 1968, showing LYR 0-6-0ST in the goods yard.

39645 MID Haworth View from road bridge, circa 1968, showing the platform and station building, with Robert Stephenson & Hawthorn 0-6-0ST.

39646 MID Haworth Early preservation view, circa 1968, showing Robert Stephenson & Hawthorn 0-6-0ST *Fred* in the goods yard.

39647 MID Haworth Early preservation view, circa 1972, showing Collett '57XX' class 0-6-0PT in "GN&SR" livery for filming *The Railway Children*.

39648 MID Haworth Early preservation view, circa 1968, showing Manning Wardle 0-6-0ST *Sir Berkeley* in Haworth yard.

39649 MID Haworth Early preservation view, circa 1968, showing 'USA' 0-6-0T No.30072 in front of the goods shed.

39650 MID Haworth Early preservation view, circa 1968, showing Robert Stephenson & Hawthorn 0-6-0ST *Fred* in the goods yard.

39651 MID Haworth View from road bridge, circa 1970, showing 'USA' 0-6-0T No.30072 alongside the single platform.

39652 MID Haworth View from road bridge, circa 1968, showing Gas Board Pecket 0-4-0ST with a single coach train

39653 MID Haworth Early preservation view, circa 1968, showing 0-4-0ST in the goods yard.

39654 MID Haworth Early preservation view, circa 1968, showing class '2MT' 2-6-2T No.41241 outside the goods shed.

39655 MID Haworth Early preservation view, circa 1968, showing railbus No.E79962 in front of the goods shed.

39656 MID Haworth Early preservation view, circa 1970s, showing 'USA' 0-6-0T No.30072 in front of the goods shed.

39657 MID Haworth Early preservation view, circa 1970s, showing 'J72' 0-6-0T No.69023 in front of the goods shed.

39658 MID Haworth Early preservation view, circa 1970s, showing class '4F' 0-6-0 No.43924 on the goods yard headshunt.

39659 MID Haworth Early preservation view, circa 1968, showing 'USA' 0-6-0T No.30072 in the goods yard.

39672 MID Haworth Detailed view, circa 1970s, showing the rear elevation of the station building.

39673 MID Haworth Colour view, circa 1970s, showing MSC 0-6-0T approaching the station.

39675 MID Haworth Early preservation view, circa 1968, showing Robert Stephenson & Hawthorn 0-6-0ST *Fred* in the goods yard.

39676 MID Haworth Early preservation view, circa 1968, showing 'N2' class 0-6-2T No.4744.

39677 MID Haworth Early preservation view, circa 1970s, showing 'Y7' class 0-4-0T No.68088 (possibly at Haworth).

12641 MID Hay-on-Wye Pre-grouping view, circa 1912.

12642 MID Hay-on-Wye Pre-grouping view, circa 1912.

12643 MID Hay-on-Wye Pre-grouping view, circa 1912.

12644 MID Hay-on-Wye Pre-grouping view, circa 1912.

12645 MID Hay-on-Wye General view, circa 1960s, with Ivatt 'Class 2MT' 2-6-0 No.46512.

12646 MID Hay-on-Wye General view, circa 1960s.

21111 MID Hay-on-Wye General view, circa 1962, showing up and down platforms, signal box and footbridge, looking towards Hereford.

21112 MID Hay-on-Wye General view, circa 1962, showing up and down platforms, station buildings and footbridge, looking towards Brecon.

12559 MID Hazelwell Pre-grouping view, circa 1912.

12560 MID Hazelwell View from bridge, circa 1912, showing up and down platforms and station buildings.

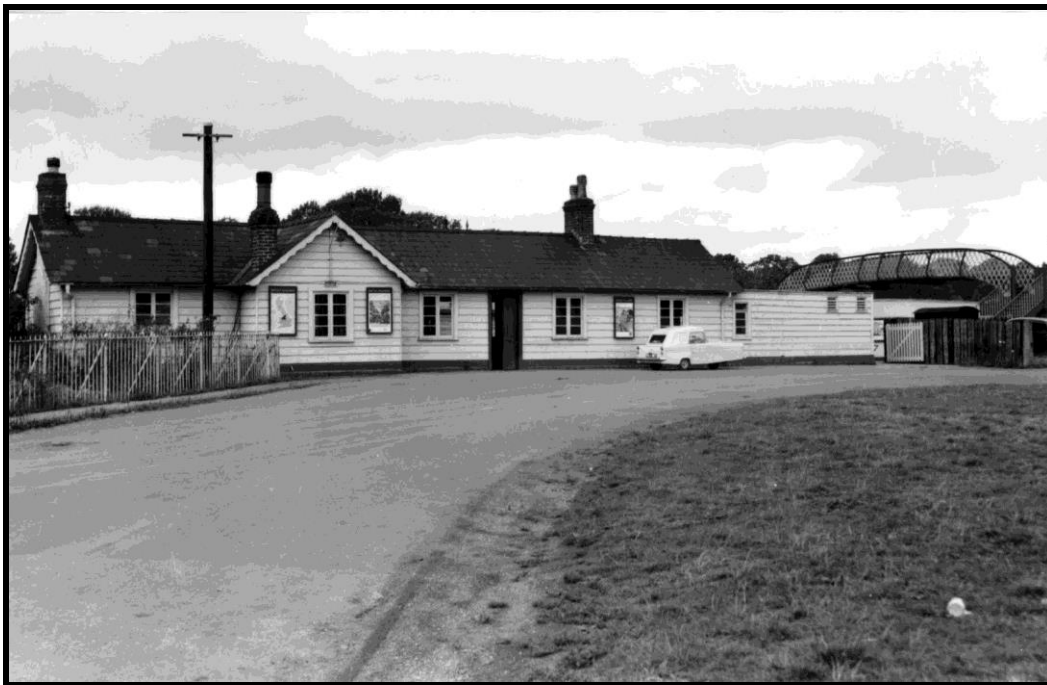
12777 MID Heath Park Halt Pre-grouping view, circa 1912.

12420 MID/LNWR Heather & Ibstock Pre-grouping view, circa 1912.

12698 MID Heaton Mersey Pre-grouping view, circa 1912.

13391 MID Hellifield Pre-grouping view, circa 1912, showing island platform, station building and engine shed, looking north towards Carlisle.

13392 MID Hellifield Pre-grouping view, circa 1912.



12646 Hay-on-Wye, c1962

13393 MID Hellifield Pre-grouping view, circa 1912.

13394 MID Hellifield General view, LMS period, by Professor Fordyce.

13395 MID Hellifield General view, LMS period, by Professor Fordyce.

37261 MID Hellifield General view, circa 1972, showing island platforms and part of station building, looking west towards the abandoned engine shed (closed 1963).

37262 MID Hellifield General view, circa 1972, showing island platform.

37263 MID Hellifield Platform end view, circa 1972, looking south towards Hellifield South Junction signal box.

37264 MID Hellifield General view, circa 1972, showing the north end of the island platform and the former Midland engine shed.

37277 MID Hellifield General view, circa 1972, showing the island platform and station building.

12509 MID Helpston Pre-grouping view, circa 1912.

12774 MID Hemel Hempstead Pre-grouping view, circa 1912.

12775 MID Hemel Hempstead Pre-grouping view, circa 1912.

12776 MID Hemel Hempstead Pre-grouping view, circa 1912.

13323 MID Hendon Pre-grouping view, circa 1912.

13324 MID Hendon Pre-grouping view, circa 1912, showing exterior of station.

37425 MID Hendon General view, circa 1950s, showing platforms and station buildings, with ex-SECR 4-4-0 No.31577 on special working.

12465 MID Henlow Camp Pre-grouping view, circa 1912.

37500 MID Henlow Camp General view, circa 1960s, showing up and down platforms and station buildings, with one track removed.

37519 MID Henlow Camp General view, circa 1960s, showing up and down platforms and station buildings, with one track removed.

12781 MID Heysham Harbour Pre-grouping view, circa 1912.

13465 MID Heysham Harbour Pre-grouping view, circa 1912.
 37453 MID Higham Ferrers Detailed view, circa 1960s, showing platform frontage of main station building.
 37478 MID Higham Ferrers General view, circa 1960s, showing single platform and station building.
 12499 MID Hinton Pre-grouping view, circa 1912.
 12500 MID Hinton General view, LMS period, by Professor Fordyce.
 12501 MID Hinton General view, LMS period, by Professor Fordyce.
 37365 MID Hinton General view, circa 1960s, showing up and down platforms, station buildings and road overbridge, looking south towards Ashchurch.
 37366 MID Hinton General view, circa 1960s, showing main station building, looking north towards Barnt Green.
 12594 MID Holmes Pre-grouping view, circa 1912.
 13443 MID Hope Pre-grouping view, circa 1912.
 13444 MID Hope General view, circa 1930s.
 13445 MID Hope Pre-grouping view, circa 1912.
 12706 MID Hornby Pre-grouping view, circa 1912.
 12707 MID Hornby General view, circa 1920, showing up and down platforms and station buildings, with unidentified class '3' 0-6-0, looking west towards Morecambe.
 37291 MID Horton-in-Ribblesdale General view, circa 1960s, showing up and down platforms and station buildings, looking north towards Carlisle.
 1817 MID Horton-in-Ribblesdale General view of station looking north, 12-08-53 (D Cullum)
 1818 MID Horton-in-Ribblesdale General view of station with 4F 43868 on pick up goods, 12-08-53 (D Cullum)
 12659 MID Hucknall Pre-grouping view, circa 1912.
 57311 MID/GWR Hunnington General view, circa 1960, showing single platform, station building and goods shed.
 57312 MID/GWR Hunnington General view, circa 1960, single platform and station building.
 37407 MID Hykeham General view, circa 1960s, showing station buildings and level crossing.
 37408 MID Hykeham General view, circa 1960s, looking towards the level crossing.
 37436 MID Hykeham General view, circa 1960s, showing up and down platforms.

37429 MID Idridgehay General view, circa 1960s, showing single platform and station building.
 12647 MID Idridgehay Pre-grouping view, circa 1912.
 12747 MID Idridgehay Pre-grouping view, circa 1912.
 12932 MID Idridgehay Postcard view, circa 1912, showing single platform and station building.
 36648 MID/NER Ilkley General view, circa 1970s, showing terminal platforms 1 and 2 from the buffer stops, with unidentified Metro-Cammell class '101' unit.
 36649 MID/NER Ilkley General view, circa 1970s, looking eastwards along platforms 1 and 2.
 36650 MID/NER Ilkley General view, circa 1970s, showing former through platforms 3 and 4, looking west towards Skipton.
 36651 MID/NER Ilkley General view, circa 1970s, showing former through platforms 3 and 4, looking east towards Leeds.
 36652 MID/NER Ilkley General view, circa 1970s, looking westwards along Platform 1.
 39666 MID Ingrow Early preservation view, circa 1970s, showing class '5MT' 4-6-0 No.45212 alongside the single platform.
 12931 MID Irchester Pre-grouping view, circa 1912.
 37413 MID Irchester View from train, circa 1960s.

37473 MID Iron Acton Post-closure view, circa 1960s, looking towards the abandoned platform from the level crossing.

12439 MID Isham Pre-grouping view, circa 1912.

12415 MID/GER Junction Road Pre-grouping view, circa 1912.

37259 MID Keighley General view, circa 1972, showing main up and down platforms and station buildings, looking west towards Morecambe.

37260 MID Keighley General view, circa 1972, showing main up and down platforms, looking east towards Leeds.

37271 MID Keighley General view, circa 1960s, looking westwards along the platforms.

39667 MID Keighley Early preservation view, circa 1970s, showing 0-6-0ST No.118 *Brussels* in the Oxenhope platforms.

39668 MID Keighley Early preservation view, circa 1968, showing 'J72' 0-6-0T No.69023 departing from the station.

39669 MID Keighley Early preservation view, circa 1968, showing 'USA' 0-6-0T No.30072 departing from the station.

39670 MID Keighley Early preservation view, circa 1968, class '2MT' 2-6-2T No.41241 and 'USA' 0-6-0T No.30072 leaving the station with a double-headed train.

39674 MID Keighley Early preservation view, circa 1968, showing 'J72' class 0-6-0T No.69023 leaving the station with an Oxenhope train.

13321 MID Kentish Town General view, circa 1960s.

36062 MID Kentish Town General view, circa 1960s, showing up and down platforms and station buildings.

51928 MID Kentish Town General view, circa 1972, showing up and down platforms and station buildings.

51931 MID Kentish Town General view, circa 1966, showing up and down platforms and station buildings, with class '115' multiple unit.

13345 MID Kettering Pre-grouping view, circa 1912.

12441 MID Kibworth Pre-grouping view, circa 1912, showing rear elevation of main station building.

12442 MID Kibworth Pre-grouping view, circa 1912.

12673 MID Kilburn Pre-grouping view, circa 1912.

39638 MID Killamarsh West Detailed view, circa 1960s, showing Killamarsh Station signal cabin.

37463 MID Killamarsh West Post-closure view, circa 1960s, showing up and down platforms and road bridge (closed 1954).

37464 MID Killamarsh West Post-closure view, circa 1960s, showing up and down platforms.

37465 MID Killamarsh West Post-closure view, circa 1960s, showing up and down platforms.

12602 MID Kilnhurst Pre-grouping view, circa 1912.

12628 MID Kilwick & Crosshills Pre-grouping view, circa 1912.

12667 MID Kimberley Pre-grouping view, circa 1912.

12668 MID Kimberley Pre-grouping view, circa 1912.

12451 MID Kimbolton Pre-grouping view, circa 1912.

12452 MID Kimbolton General view, circa 1930s.

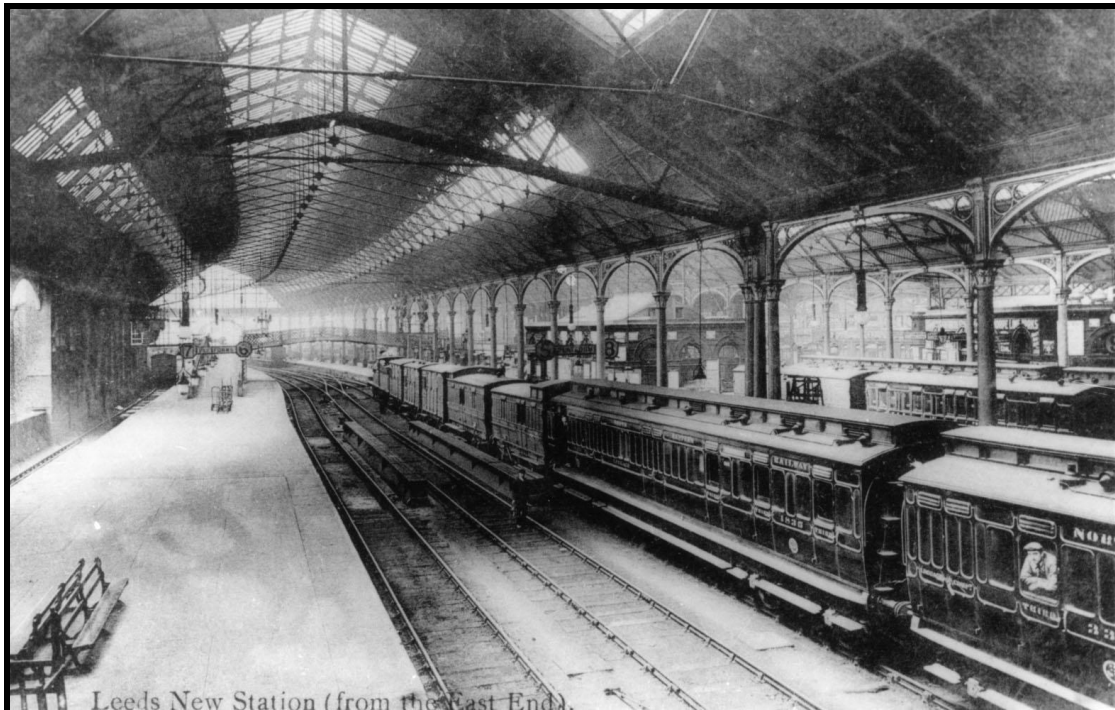
37297 MID Kimbolton General view, circa 1959, showing up and down platforms and part of station building.

37298 MID Kimbolton General view, circa 1959, showing up and down platforms, station buildings and road overbridge, looking east towards Huntingdon.

37306 MID Kimbolton General view, circa 1959, showing details of main station building.

12557 MID Kings Heath Pre-grouping view, circa 1912.

- 12558 MID Kings Heath Pre-grouping view, circa 1912.
 13480 MID Kings Norton Pre-grouping view, circa 1912.
 13481 MID Kings Norton Pre-grouping view, circa 1912.
 13482 MID Kings Norton Pre-grouping view, circa 1912.
 13483 MID Kings Norton Pre-grouping view, circa 1912.
 12468 MID Kingsbury General view, circa 1960s.
 12636 MID Kinnersley General view, circa 1960s.
 12637 MID Kinnersley General view, LMS period, by Professor Fordyce.
 21105 MID Kinnersley General view, circa 1962, showing the single platform and station building, looking towards Hereford.
 21106 MID Kinnersley General view, circa 1962, showing the single platform, station building and road bridge, looking towards Brecon.
 12522 MID Kirby Muxloe Pre-grouping view, circa 1912.
 12523 MID Kirby Muxloe Pre-grouping view, circa 1912.
 12524 MID Kirby Muxloe Pre-grouping view, circa 1912 (same as 12523, better negative).
 12525 MID Kirby Muxloe Pre-grouping view, circa 1912.
 12526 MID Kirby Muxloe Pre-grouping view, circa 1912.
 12727 MID Kirkby Stephen Pre-grouping view, circa 1912.
 37460 MID Kirkby-in-Ashfield East General view, circa 1960s, showing up and down platforms, station buildings and footbridge.
 37461 MID Kirkby-in-Ashfield East General view, circa 1960s, showing up and down platforms and station buildings.
 12566 MID Kirklington & Edingley Pre-grouping view, circa 1912.
 12567 MID Kirklington & Edingley Pre-grouping view, circa 1912.
 12614 MID Kirkstall Pre-grouping view, circa 1912.
 12615 MID Kirkstall Pre-grouping view, circa 1912.



12613 Leeds, Pre-grouping view

12711 MID Lancaster Green Ayre General view circa 1930s, by Professor Fordyce, showing up and down platforms, station buildings and signal box, looking west towards Morecambe.

12712 MID Lancaster Green Ayre General view circa 1930s, by Professor Fordyce, looking east towards Leeds and showing the new signal box, erected in 1932.

36036 MID Lancaster Green Ayre General view, circa 1960s, showing 4-6-0, 2-6-0 and 0-6-0T locomotives around the turntable at Green Ayre shed.

12681 MID Langley Mill Pre-grouping view, circa 1912.

36040 MID Langley Mill Archive view, circa 1912, looking along the single line towards the level crossing.

12732 MID Langwathby Pre-grouping view, circa 1912.

37293 MID Langwathby General view, circa 1972, showing up and down platforms and station buildings, looking north towards Carlisle.

50053 NCC Larne Circa 1930s view, showing 2-4-2T No.110.

20888 NCC Larne Harbour Detailed view, circa 1930s, showing Kitson 3 ft gauge 4-4-2T No.113 undergoing repairs.

37285 MID Lazonby General view, circa 1960s, showing up and down platforms, station buildings and Midland-type water tower.

13337 MID Legrave Pre-grouping view, circa 1912.

37489 MID Legrave General view, circa 1960s, showing platforms, station buildings and footbridge.

37490 MID Legrave General view, circa 1960s, showing platforms and footbridge.

12612 MID Leeds Pre-grouping view, circa 1912.

12613 MID Leeds Pre-grouping view, circa 1912, showing interior.

36039 MID Leeds Archive view, circa 1912, showing interior of station.

33468 MID Leicester London Road Pre-grouping view, circa 1912.

35978 MID Leire Halt Post-closure view, circa 1960s, showing derelict up and down platforms after removal of the track.

35979 MID Leire Halt General view, circa 1960s, showing up and down platforms after removal of the track.

36049 MID/LTSR Leyton Midland Road General view, circa 1960s, showing up and down platforms and station buildings.

36050 MID/LTSR Leyton Midland Road General view, circa 1960s, showing up and down platforms and station buildings.

35975 MID/LTSR Leytonstone High Road General view, circa 1960s, showing up and down platforms and Midland-style signal box.

13417 MID Lincoln St Marks General view, circa 1960s.

13418 MID Lincoln St Marks General view, circa 1960s.

37398 MID Lincoln St Marks General view, circa 1960s, showing main station buildings.

37399 MID Lincoln St Marks Platform end view, circa 1960s.

12671 MID Little Eaton General view, LMS period, by Professor Fordyce.

37290 MID Little Salkeld General view, circa 1972, showing up and down platforms, station buildings and MR signal box, looking south towards London.

50099 NCC Londonderry Waterside Detailed view, circa 1930s, with 'A1' class 4-4-0 No.34 *Knocklayd*.

13348 MID Long Eaton Pre-grouping view, circa 1912.

39637 MID Long Eaton View from train, circa 1970, showing Long Eaton Town signal cabin.

12730 MID Long Marton Pre-grouping view, circa 1912.

13396 MID Long Preston Pre-grouping view, circa 1912.

37257 MID Long Preston General view, circa 1972, showing up and down platforms and road overbridge.

37258 MID Long Preston General view, circa 1972, showing up and down platforms.

37423 MID Loughborough Midland General view, circa 1960s, showing main up and down platforms, station buildings and footbridge.

12930 MID Lowdham General view, 03-08-1938.

13402 MID Lowdham General view, 03-03-1938 (same as 13403).

13403 MID Lowdham Pre-grouping view, circa 1930s (same as 13402).

13404 MID Lowdham Pre-grouping view, circa 1912.

13405 MID Lowdham Pre-grouping view, circa 1912.

13406 MID Lowdham Pre-grouping view, circa 1912.

12510 MID Luffenham Pre-grouping view, circa 1912.

12511 MID Luffenham Pre-grouping view, circa 1912.

12512 MID Luffenham Pre-grouping view, circa 1912.

13335 MID Luton Midland Road Pre-grouping view, circa 1912, showing exterior of station.

13336 MID Luton Midland Road Pre-grouping view, circa 1912.

37454 MID Luton Midland Road General view, circa 1960s, showing platforms and station buildings.

37455 MID Luton Midland Road General view, circa 1960s, showing platforms and station buildings.

39679 MID/GWR Lydbrook Postcard view, circa 1912, showing Lydbrook Viaduct.

56977 MID/GWR Lydbrook Postcard view, circa 1912, showing "Lydbrook Church and Station".

57439 MID/GWR Lydbrook Panoramic view, circa 1912, showing station, church and surrounding valley.

56981 MID/GWR Lydney Postcard view, circa 1912, showing up and down main line platforms.

56971 MID/GWR Lydney Junction General view, circa 1960s, showing up and down branch platforms and part of station buildings.

56972 MID/GWR Lydney Junction Postcard view, circa 1912, showing "Lydney Junction Station (MR & S&W Joint Railway)".

56973 MID/GWR Lydney Junction General view, 27-07-1952, showing up and down main line platforms, water tower and part of station buildings.

56974 MID/GWR Lydney Junction General view, circa 1950s, showing AEC railcar in branch platforms.

56993 MID/GWR Lydney Junction General view, circa 1960s, showing up and down branch platforms.

56591 MID/GWR Lydney Town General view, circa 1960s, showing up and down platforms, station buildings and signal box.

56601 MID/GWR Lydney Town General view, circa 1960s, showing up and down platforms, station buildings and signal cabin.

56975 MID/GWR Lydney Town Postcard view, circa 1912, showing up and down platforms, station buildings and footbridge, looking towards the level crossing.

56976 MID/GWR Lydney Town General view, circa 1960s, showing up and down platforms and station buildings.

56979 MID/GWR Lydney Town General view, circa 1958, showing up and down platforms with two-coach branch train.

56980 MID/GWR Lydney Town Detailed view, circa 1960s, showing Lydney Crossing signal cabin.

11311 SYJ Maltby Pre-grouping view, circa 1912.
 11312 SYJ Maltby Pre-grouping view, circa 1912.
 11313 SYJ Maltby Pre-grouping view, circa 1912.
 11314 SYJ Maltby Pre-grouping view, circa 1912.
 36028 MID Malvern Wells Post-closure view, circa 1960s, showing derelict facilities.
 37457 MID Malvern Wells Post-closure view, circa 1960s, showing up and down platforms and station buildings.
 35990 MID Mangotsfield Platform view, circa 1960s, showing detail of canopies.
 35991 MID Mangotsfield General view, circa 1960s, showing platforms and canopies.
 35992 MID Mangotsfield General view, circa 1960s, showing platforms and canopies.
 35993 MID Mangotsfield General view, circa 1960s.
 35994 MID Mangotsfield General view, circa 1960s.
 35995 MID Mangotsfield General view, circa 1960s.
 36058 MID Mangotsfield General view, circa 1960s, showing up and down Birmingham platforms, looking east.
 12622 MID Manningham Pre-grouping view, circa 1912.
 12623 MID Manningham Pre-grouping view, circa 1912.
 12624 MID Manningham Pre-grouping view, circa 1912.
 12625 MID Manningham Pre-grouping view, circa 1912.
 12570 MID Mansfield Pre-grouping view, circa 1912, showing exterior of station.
 37870 MID Mansfield Archive view, circa 1920, showing Mansfield Colliery, with 'Bolsover' private owner wagons on the foreground.
 12571 MID Mansfield Woodhouse Pre-grouping view, circa 1912.
 12513 MID Manton Pre-grouping view, circa 1912.
 12514 MID Manton Pre-grouping view, circa 1912.
 12418 MID/LNWR Market Bosworth Pre-grouping view, circa 1912.
 12419 MID/LNWR Market Bosworth Pre-grouping view, circa 1912, showing exterior of station.
 13346 MID/LNWR Market Harborough Pre-grouping view, circa 1912, showing exterior of station.
 13347 MID/LNWR Market Harborough Postcard view, circa 1912, looking northwards across the station forecourt, with the Midland main line to the right and the LNWR platforms to the left.
 36927 MID/LNWR Market Harborough Detailed view, circa 1912, showing the rear elevation of the main station building.
 37395 MID/LNWR Market Harborough General view, circa 1960s, looking northwards along the LNWR platforms.
 37396 MID/LNWR Market Harborough General view, circa 1960s, looking southwards from the north end of the platforms.
 13454 MID/GCR Marple Pre-grouping view, circa 1912.
 13455 MID/GCR Marple Pre-grouping view, circa 1912.
 13456 MID/GCR Marple Pre-grouping view, circa 1912.
 12578 MID Matlock Pre-grouping view, circa 1912.
 12579 MID Matlock General view, circa 1970s.
 12580 MID Matlock General view, circa 1970s.
 12581 MID Matlock General view, circa 1970s.
 12577 MID Matlock Bath Pre-grouping view, circa 1912.
 13435 MID Matlock Bath Pre-grouping view, circa 1912 (W.H.Smith S2758).
 13436 MID Matlock Bath General view, circa 1960s.
 12423 MID/LNWR Measham Pre-grouping view, circa 1912.
 12537 MID Melbourne Pre-grouping view, circa 1912.

36033 MID Melbourne View from bridge, circa 1912, showing single platform and station building.

37388 MID Melton Mowbray Town Platform end view, circa 1960s.

37389 MID Melton Mowbray Town General view, circa 1960s, showing up and down platforms, station buildings and footbridge.

13388 MID Menston Pre-grouping view, circa 1912.

36661 MID Menston General view, circa 1970s, showing up and down platforms and station buildings.

36662 MID Menston General view, circa 1970s, showing up and down platforms, station buildings and footbridge.

12695 MID Methley Pre-grouping view, circa 1912.

12696 MID Methley Pre-grouping view, circa 1912.

56596 MID/GWR Milkwall Post-closure view showing single platform and brick station building.

57318 MID/GWR Milkwall General view, circa 1960s, showing platform, station building and road overbridge.

13325 MID Mill Hill Pre-grouping view, circa 1912, showing exterior of station.

37426 MID Mill Hill Broadway General view, circa 1960s, showing up and down main line and suburban platforms and station buildings.

37427 MID Mill Hill Broadway General view, circa 1960s, showing platforms and station buildings.

37430 MID Mill Hill Broadway General view, circa 1960s, showing rear elevation of main station building.

37431 MID Mill Hill Broadway General view, circa 1960s, showing up and down main line and suburban platforms and station buildings.

37432 MID Mill Hill Broadway General view, circa 1960s, showing up and down main line and suburban platforms.

12589 MID Millers Dale Pre-grouping view, circa 1912.

12590 MID Millers Dale Pre-grouping view, circa 1912.

12691 MID Millhouses & Eccleshall Pre-grouping view, circa 1912.

12692 MID Millhouses & Eccleshall Pre-grouping view, circa 1912.

36038 MID Millhouses & Eccleshall Archive view, circa 1912s, showing platforms and station buildings.

12534 MID Moira Pre-grouping view, circa 1912.

13387 MID Monk Bretton Pre-grouping view, circa 1912.

57241 MID/GWR Montpelier General view, circa 1960s, showing up and down platforms.

57242 MID/GWR Montpelier General view, circa 1960s, showing up and down platforms and tunnel mouth.

57243 MID/GWR Montpelier General view, circa 1960s, showing up and down platforms, station buildings and footbridge.

12633 MID Moorhampton Pre-grouping view, circa 1912.

12634 MID Moorhampton General view, LMS period, by Professor Fordyce.

12635 MID Moorhampton General view, circa 1960s.

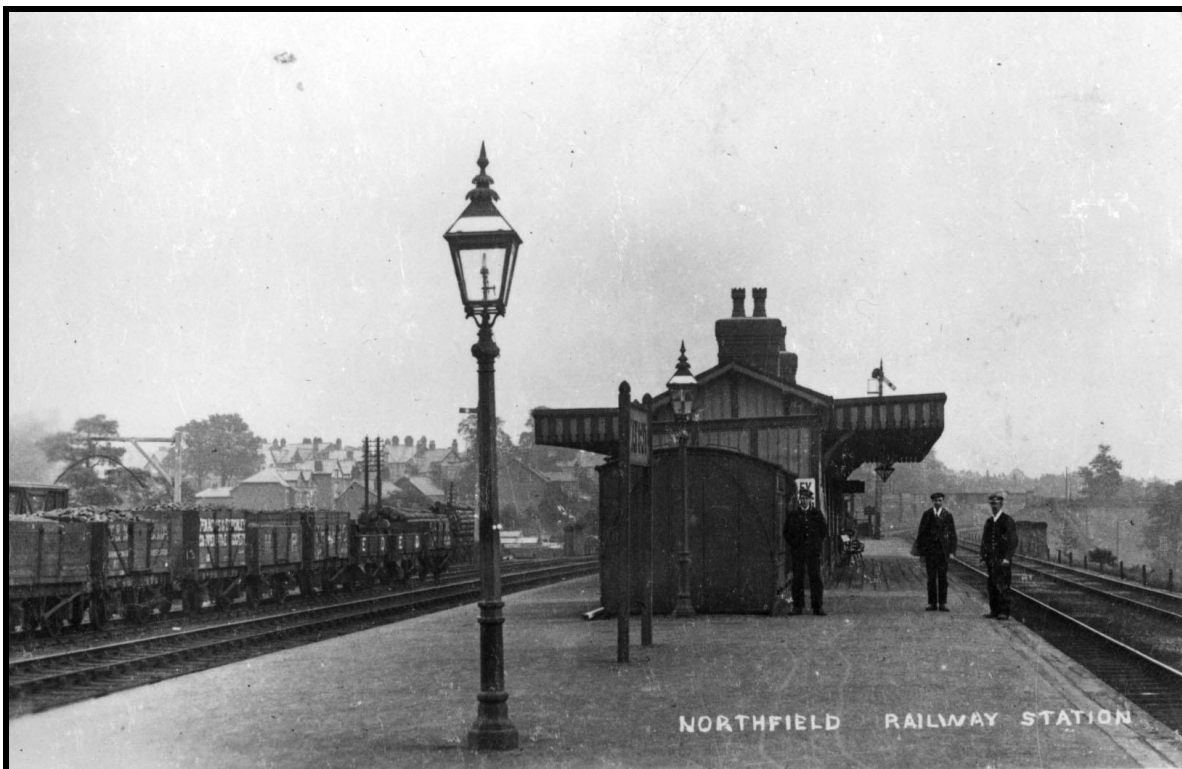
21103 MID Moorhampton General view, circa 1962, showing the single platform and station building, looking towards Hereford.

21104 MID Moorhampton General view, circa 1962, showing the single platform, station building and road bridge, looking towards Brecon.

13458 MID Morecambe Promenade Pre-grouping view, circa 1912.

13459 MID Morecambe Promenade Pre-grouping view, circa 1912.

- 13460 MID Morecambe Promenade Pre-grouping view, circa 1912.
- 13461 MID Morecambe Promenade Pre-grouping view, circa 1912.
- 13462 MID Morecambe Promenade General view, circa 1930s.
- 13463 MID Morecambe Promenade General view, circa 1930s.
- 13464 MID Morecambe Promenade General view, circa 1930s.
- 36034 MID Morecambe Promenade Archive view, circa 1908, showing pioneer 6,600 Volt ac electric multiple unit alongside Platform 3, with car No.2241 at the leading end.
- 37248 MID Morecambe Promenade Platform view, circa 1960s, looking east towards Lancaster.
- 37249 MID Morecambe Promenade General view, circa 1960s, looking west towards the terminal buffer stops.
- 37441 MID Morriston East Post-closure view, circa 1960s, showing up and down platforms, station buildings and road overbridge (closed 1950).
- 37442 MID Morriston East Post-closure view, circa 1960s, showing details of station building.
- 12554 MID Moseley General view, circa 1930s.
- 12555 MID Moseley Pre-grouping view, circa 1912.
- 12556 MID Moseley Pre-grouping view, circa 1912.



13485 Northfield, Pre-grouping view

- 12763 MID Nailsworth Pre-grouping view, circa 1912.
- 12764 MID Nailsworth Pre-grouping view, circa 1912.
- 12765 MID Nailsworth Pre-grouping view, circa 1912.
- 12766 MID Nailsworth Pre-grouping view, circa 1912.
- 12767 MID Nailsworth Pre-grouping view, circa 1912.
- 12768 MID Nailsworth Pre-grouping view, circa 1912, showing exterior of station.
- 36052 MID Nailsworth Detailed view, circa 1960s, showing single-lever open ground frame.

37336 MID Nailsworth Post-closure view, circa 1960s, showing platform and station building.
 37337 MID Nailsworth Post-closure view, circa 1960s, showing single platform and station building.
 37338 MID Nailsworth Post-closure view, circa 1960s, showing single platform and station building.
 13451 MID New Mills Pre-grouping view, circa 1912.
 13452 MID New Mills Pre-grouping view, circa 1912.
 13411 MID Newark Castle Pre-grouping view, 1906.
 13412 MID Newark Castle Pre-grouping view, circa 1912.
 13413 MID Newark Castle Pre-grouping view, circa 1912.
 13414 MID Newark Castle General view, LMS period, by Professor Fordyce.
 37417 MID Newark Castle General view, circa 1960s, showing up and down platforms and station buildings.
 37418 MID Newark Castle Platform end view, circa 1960s.
 37497 MID Newbiggin General view, circa 1960s, showing up and down platforms and station buildings.
 12616 MID Newlay & Horsforth Pre-grouping view, circa 1912.
 12617 MID Newlay & Horsforth Pre-grouping view, circa 1912.
 13484 MID Northfield Pre-grouping view, circa 1912.
 13485 MID Northfield Pre-grouping view, circa 1912, showing island platform and station buildings.
 36059 MID Northfield General view, circa 1960s, showing island platform and station buildings.
 37475 MID Northfield General view, circa 1960s, showing island platform and station building.
 13399 MID Nottingham Midland Pre-grouping view, circa 1912.
 13400 MID Nottingham Midland General view, 06-08-1966.
 12475 MID Nottingham Road Pre-grouping view, showing the station decorated in connection with a royal visit in 1906.
 37414 MID Nuneaton Abbey Street Detailed view, circa 1960s, showing the stairway that gave access from the adjacent road overbridge.
 37415 MID Nuneaton Abbey Street General view, circa 1960s, showing up and down platforms.

13466 MID Oakham Pre-grouping view, circa 1912.
 13467 MID Oakham Pre-grouping view, circa 1912.
 37404 MID Oakham General view, circa 1960s, showing up and down platforms, station buildings and footbridge.
 37405 MID Oakham General view, circa 1960s, showing up and down platforms and station buildings.
 12435 MID Oakley Pre-grouping view, circa 1912.
 12436 MID Oakley Pre-grouping view, circa 1912.
 12933 MID Oakworth Pre-grouping view, circa 1912.
 39671 MID Oakworth Early preservation view, circa 1968, showing Worsdell 'J72' 0-6-0T No.69023 alongside the single platform.
 36003 MID Oldland Common General view, circa 1960s, showing up and down platforms.
 36004 MID Oldland Common General view, circa 1960s, showing up and down platforms, waiting shelters and road overbridge.
 36045 MID Olney General view, circa 1960s, showing up and down platforms and footbridge.
 36909 MID Olney General view, circa 1950s, showing up and down platforms, station buildings and footbridge.

12729 MID Ormside Pre-grouping view, circa 1912, showing exterior of station.

37289 MID Ormside General view, circa 1972, showing up and down platforms and station buildings.

11365 MID/NER Otley Pre-grouping view by J.Valentine, circa 1912.

11366 MID/NER Otley Pre-grouping view, circa 1912.

11367 MID/NER Otley Pre-grouping view, circa 1912.

39660 MID Oxenhope Panoramic view, circa 1968, showing RSH 0-6-0ST *Fred* in open countryside near Oxenhope.

39661 MID Oxenhope Early preservation view, circa 1968, showing MSC 0-6-0T alongside the single platform.

39662 MID Oxenhope Early preservation view, circa 1968, showing Ivatt class '2MT' 2-6-2T No.41241 alongside the single platform.

39663 MID Oxenhope Early preservation view, circa 1970s, showing Collett '57XX' class 0-6-0PT alongside the single platform.

39664 MID Oxenhope Early preservation view, circa 1968, showing 'J72' class 0-6-0T No.69023 alongside the platform.

39665 MID Oxenhope Early preservation view, circa 1970s, showing '57XX' class 0-6-0PT running-round its train.

39678 MID Oxenhope Early preservation view, circa 1968, showing Manning Wardle 0-6-0ST *Sir Berkeley* (possibly at Oxenhope).

56593 MID/GWR Parkend General view, circa 1960s, showing up and down platforms and footbridge.

56597 MID/GWR Parkend General view, circa 1960s, showing up and down platforms and level crossing.

56967 MID/GWR Parkend Postcard view, circa 1912, showing "View from Cinder Tips, Park End".

56968 MID/GWR Parkend Postcard view, circa 1912, showing up and down platforms, station buildings and level crossing.

56969 MID/GWR Parkend View of level crossing from the road, circa 1930s.

56970 MID/GWR Parkend Postcard view, circa 1912, showing the level crossing and signal box from the goods yard.

12595 MID Parkgate & Rawmarsh Pre-grouping view, circa 1912.

12600 MID Parkgate & Rawmarsh Pre-grouping view, circa 1912.

12601 MID Parkgate & Rawmarsh Pre-grouping view, circa 1912.

36911 MID Peak Forest View from train, circa 1960s, showing station building.

13472 MID Peartree Pre-grouping view, circa 1912, with Kirtley double-framed class '2' 0-6-0 No.2858 in the station.

12543 MID Penns Pre-grouping view, circa 1912.

12544 MID Penns General view, circa 1930s.

37503 MID Piddington General view, circa 1960s, showing up and down platforms and station buildings.

37504 MID Piddington General view, circa 1960s, showing up and down platforms and station buildings.

12684 MID Pinxton & Selston Pre-grouping view, circa 1912.

12649 MID Pontardawe Pre-grouping view, circa 1912.

12650 MID Pontardawe Pre-grouping view, circa 1912.

37439 MID Pontardawe Post-closure view, circa 1960s, showing station building and road bridge (closed 1950).

37440 MID Pontardawe Post-closure view, circa 1960s, showing platform, station building and footbridge.

12683 MID Pye Bridge General view, circa 1930s.



13469 Redditch, circa 1962

13326 MID Radlett General view, circa 1930s.

13327 MID Radlett General view, circa 1930s.

13328 MID Radlett General view, circa 1930s.

13329 MID Radlett Pre-grouping view, circa 1912.

13330 MID Radlett Pre-grouping view, circa 1912.

37456 MID Radlett General view, circa 1960s, showing up and down main line and suburban platforms, station buildings and footbridge.

12450 MID Raunds General view, circa 1930s.

37300 MID Raunds General view, circa 1959, showing single platform and station building, looking east towards Huntingdon.

12518 MID Rearsby Pre-grouping view, circa 1912.

12772 MID Redbourn Pre-grouping view, circa 1912.

12773 MID Redbourn Pre-grouping view, circa 1912.

13469 MID Redditch General view, circa 1962, looking along platform, by J.L.Smith.

13470 MID Redditch Grouping view, circa 1962, by J.L.Smith.

57246 MID/GWR Redland General view, circa 1960s, showing up and down platforms and station buildings.

57247 MID/GWR Redland General view, circa 1960s, showing up and down platforms and part of station buildings.

57248 MID/GWR Redland General view, circa 1960s, showing up and down platforms, footbridge and road overbridge.

12473 MID Repton & Willington Pre-grouping view, circa 1912, showing station exterior.

12474 MID Repton & Willington Pre-grouping view, circa 1912.

12721 MID Ribblehead Pre-grouping view, circa 1912, showing engine in snow.

12722 MID Ribblehead Pre-grouping view, circa 1912.

12723 MID Ribblehead Pre-grouping view, circa 1912.

37292 MID Ribblehead General view, circa 1972, showing up and down platforms and station buildings, looking north towards Carlisle.

12676 MID Ripley Pre-grouping view, circa 1912.

13361 MID Ripley Pre-grouping view, circa 1912.

37329 MID Ripple Post-closure view, circa 1960s, showing details of the main station building.

37330 MID Ripple General view, circa 1950s, showing main station building.

37331 MID Ripple Post-closure view, circa 1960s, showing station building and road overbridge.

13457 MID/GCR Romiley Pre-grouping view, circa 1912.

12596 MID Rotherham Masborough Pre-grouping view, circa 1912.

12597 MID Rotherham Masborough Pre-grouping view, circa 1912.

12598 MID Rotherham Masborough Pre-grouping view, circa 1912 (W.H.Smith S9260).

12599 MID Rotherham Masborough Pre-grouping view, circa 1912.

12583 MID Rowsley Pre-grouping view, circa 1912.

12609 MID Royston Pre-grouping view, circa 1912.

12610 MID Royston Pre-grouping view, circa 1912.

12611 MID Royston Pre-grouping view, circa 1912.

56605 MID/GWR Rubery Post-closure view, circa 1960s, showing derelict facilities.

56606 MID/GWR Rubery Postcard view, circa 1912, showing "Rubery Station from Quarry".

56959 MID/GWR Rubery General view, circa 1960s, showing up and down platforms, station buildings and signal cabin.

12778 MID Rushden Pre-grouping view, circa 1912.

12779 MID Rushden Pre-grouping view, circa 1912 (same as 12778, better negative).

12780 MID Rushden Pre-grouping view, circa 1912.

37869 MID Rushden Detailed study of main station building, circa 1960s.

12756 MID Ryeford General view, circa 1930s.

12757 MID Ryeford General view, LMS period, by Professor Fordyce.

37437 MID Ryeford Post-closure view, circa 1960s, showing former station building (closed 1947).

37438 MID Ryeford Post-closure view, circa 1960s, showing single platform, station building and goods shed, looking east towards Nailsworth.

12928 MID Rylestone Pre-grouping view, circa 1912, showing single platform and station building.

37371 MID Salford Priors General view, circa 1960, showing single platform, goods shed and road overbridge, looking south towards Ashchurch.

37372 MID Salford Priors General view, circa 1960, showing single platform and station building, looking north towards Barnt Green.

35164 MID Saltley General view, circa 1912, showing platforms, station buildings and overbridge.

36031 MID Saltley General view, circa 1930s, showing class '1' 0-6-0T No.1781 and other locomotives outside Saltley shed.

- 37422 MID Saltley General view, circa 1960s, showing island platform and station buildings.
 37496 MID Saltley General view, circa 1960s, showing island platform and station building.
 12936 MID Sandal & Walton Pre-grouping view, circa 1912, showing signal cabin and station building.
 12460 MID Sawley Junction Pre-grouping view, circa 1912.
 12461 MID Sawley Junction Pre-grouping view, circa 1912.



12520 Saxby, visit of King Edward VII, January 7th 1907

- 12520 MID Saxby Pre-grouping view with King Edward VII.
 12733 MID Scotby Pre-grouping view, circa 1912.
 53029 MID/GWR Sea Mills Postcard view, circa 1912, showing up and down platforms.
 57239 MID/GWR Sea Mills General view, circa 1960s, showing up and down platforms and station buildings.
 57240 MID/GWR Sea Mills General view, circa 1960s, showing up and down platforms.
 37282 MID Settle General view, circa 1970s, showing up and down platforms and station buildings, looking south towards London.
 37283 MID Settle General view, circa 1972, showing up and down platforms and station buildings, looking north towards Carlisle.
 37284 MID Settle General view, circa 1972, showing up and down platforms and station buildings, looking south towards London.
 13596 MID/GWR Severn Bridge Pre-grouping view, circa 1912, showing the Severn Bridge.
 13597 MID/GWR Severn Bridge Pre-grouping view, circa 1912, showing the Severn Bridge.
 56585 MID/GWR Severn Bridge Post-closure view, circa 1960s, showing up and down platforms and station buildings, looking west towards Lydney.
 56586 MID/GWR Severn Bridge Post-closure view, circa 1960s, showing up and down platforms and station buildings, looking east towards Sharpness.
 56587 MID/GWR Severn Bridge Post-closure view, circa 1960s, showing platform ends and Severn Bridge.

37466 MID/LNWR Shackerstone General view, circa 1960s, showing up and down platforms, station buildings and footbridge, with one track removed.

12437 MID Sharnbrook Pre-grouping view, circa 1912.

12438 MID Sharnbrook Postcard view, circa 1912, showing "The Railway Hotel Sharnbrook".

37410 MID Sharnbrook View from train, circa 1960s, showing main station building.

13593 MID/GWR Sharpness Pre-grouping view, circa 1912.

13594 MID/GWR Sharpness Pre-grouping view, circa 1912.

13595 MID/GWR Sharpness Pre-grouping view, circa 1912.

54391 MID/GWR Sharpness General view, circa 1962, showing an unidentified 0-6-0PT alongside the water tank with the station building in the background.

56588 MID/GWR Sharpness View from overbridge, circa 1950s, showing up and down platforms and station buildings, with GWR railcar.

56589 MID/GWR Sharpness General view, circa 1960s, showing up and down platforms and station buildings framed by bridge arch.

56590 MID/GWR Sharpness General view, circa 1960s, showing up and down platforms and station buildings with one track removed.

13375 MID Sheffield Pre-grouping view, circa 1912.

37317 MID Shefford General view, circa 1960s, showing road level station building.

37319 MID Shefford General view, circa 1960s, showing up and down platforms and waiting shelter.

37320 MID Shefford General view, circa 1960s, showing up and down platforms.

37265 MID Shipley General view, circa 1972, looking south-westwards along platforms 3 and 4.

37266 MID Shipley General view, circa 1972, looking north-westwards along platforms 1 and 2.

37267 MID Shipley General view, circa 1972, showing the station buildings from Platform 3.

37268 MID Shipley Detailed view, circa 1972, showing rear elevation of the main station building from the station forecourt.

37281 MID Shipley General view, circa 1972, looking south-eastwards along platforms 1 and 2.

39635 MID Shipley Detailed study of Bradford Junction signal cabin, circa 1968.

39636 MID Shipley General view, circa 1960s, showing up and down platforms and Shipley Bingley Junction signal cabin.

12572 MID Shirebrook Pre-grouping view, circa 1912.

53030 MID/GWR Shirehampton Postcard view, circa 1912, showing up and down platforms, station buildings and lattice footbridge, looking east towards Bristol.

57244 MID/GWR Shirehampton General view, circa 1960s, showing up and down platforms, station buildings and footbridge.

57245 MID/GWR Shirehampton General view, circa 1960s, showing up and down platforms, station buildings and footbridge.

12745 MID Shottle Pre-grouping view, circa 1912.

12746 MID Shottle General view, LMS period, by Professor Fordyce.

12541 MID Shustoke Pre-grouping view, circa 1912.

12456 MID Sileby General view, circa 1930s.

36035 MID Skipton General view, circa 1960s, looking east towards Leeds.

36037 MID Skipton General view, circa 1960s, looking eastwards along the platforms.

37278 MID Skipton General view, circa 1972, looking westwards along Platform 2.

37279 MID Skipton General view, circa 1972, showing platforms and station buildings, looking north-west towards Carlisle.

12421 MID/LNWR Snarestone Pre-grouping view, circa 1912.

12422 MID/LNWR Snarestone Pre-grouping view, circa 1912, showing exterior of station.

37510 MID South Hampstead Detailed view, circa 1960s, showing street frontage of main station building.

12521 MID South Witham Pre-grouping view, circa 1912.

37507 MID Southill General view, circa 1960s, showing up and down platforms and station buildings.

37508 MID Southill General view, circa 1960s, showing up and down platforms and station buildings.

56594 MID/GWR Speech House Road Post-closure view showing derelict facilities.

56599 MID/GWR Speech House Road Post-closure view, circa 1960s, showing single platform and signal cabin after removal of trackwork.

13349 MID Spondon Pre-grouping view, circa 1912.

13319 MID St Pancras Pre-grouping view, circa 1912.

13320 MID St Pancras Pre-grouping view, circa 1912.

36032 MID St Pancras General view, circa 1930s, showing Johnson class '3' 4-4-0 No.747 with an up passenger working.

37393 MID St Pancras General view, circa 1960s, showing interior of train shed, looking north from the buffer stops.

37394 MID St Pancras General view, circa 1960s, showing interior of the train shed, with a Derby class '115' 4-car unit.

13468 MID Stamford Town Pre-grouping view, circa 1912.

37400 MID Stamford Town General view, circa 1960s, showing main up and down platforms and station buildings.

37401 MID Stamford Town General view, circa 1960s, showing up and down platforms, station buildings and footbridge.

37402 MID Stamford Town General view, circa 1960s, showing main up and down platforms, station buildings and footbridge.

37403 MID Stamford Town General view, circa 1960s, showing up and down platforms, station buildings and footbridge.

12680 MID Stanton Gate Pre-grouping view, circa 1912.

35996 MID Staple Hill General view, circa 1960s, showing up and down platforms.

35997 MID Staple Hill View of platforms from approach path, circa 1960s, showing footbridge and tunnel mouth.

35998 MID Staple Hill General view, circa 1960s, showing up and down platforms, station buildings and footbridge.

12679 MID Stapleford & Sandiacre Pre-grouping view, circa 1912.

12626 MID Steeton & Silsden Pre-grouping view, circa 1912.

12627 MID Steeton & Silsden Pre-grouping view, circa 1912.

12538 MID Stockingford Postcard view, circa 1912, showing the goods shed and signal box, with the station visible in the background.

12417 MID/LNWR Stoke Golding Pre-grouping view, circa 1912.

13515 MID Stonehouse Pre-grouping view, circa 1912.

37352 MID Stonehouse Bristol Road General view, circa 1960s, showing up and down platforms, looking south towards Bristol.

37353 MID Stonehouse Bristol Road General view, circa 1960s, showing up and down platforms, station buildings and footbridge, looking north towards Birmingham.

12545 MID Streetley Pre-grouping view, circa 1912.

12546 MID Streetley Pre-grouping view, circa 1912.

12547 MID Streetley Pre-grouping view, circa 1912.

13453 MID/GCR Strines Pre-grouping view, circa 1912.

12769 MID Stroud Pre-grouping view, circa 1912.

37493 MID Stroud General view, circa 1960s, showing single platform and station building, looking east towards the goods yard at the end of the line.

37494 MID Stroud General view, circa 1960s, showing single platform and station building, looking west towards Stonehouse.

37495 MID Stroud General view, circa 1960s, showing class '3F' 0-6-0T No.41748 alongside the single platform with an enthusiasts' special.

12476 MID Studley & Astwood Bank Pre-grouping view, circa 1912.

12477 MID Studley & Astwood Bank Pre-grouping view, circa 1912.

12478 MID Studley & Astwood Bank Pre-grouping view, circa 1912.

37307 MID Studley & Astwood Bank General view, circa 1960s, showing single platform, station building and road overbridge.

37308 MID Studley & Astwood Bank Detailed view, circa 1960s, showing station buildings, goods shed and signal box.

12661 MID Sutton Junction Pre-grouping view, circa 1912.

12662 MID Sutton Junction Pre-grouping view, circa 1912.

12753 MID Sutton-in-Ashfield Pre-grouping view, circa 1912.

12655 MID Swansea St Thomas General view, circa 1930, looking towards the buffer stoops with an unidentified class '1' 0-4-4T taking water.

37419 MID Swinderby General view, circa 1960s, showing up and down platforms, station buildings and level crossing.

37420 MID Swinderby General view, circa 1960s, showing up and down platforms and station buildings.

37421 MID Swinderby General view, circa 1960s, showing up and down platforms, station buildings and level crossing.

12603 MID Swinton Pre-grouping view, circa 1912.

12453 MID Syston Pre-grouping view, circa 1912.

12454 MID Syston Pre-grouping view, circa 1912.

12455 MID Syston Pre-grouping view, circa 1912.

36915 MID Tewkesbury General view, circa 1951, showing class '3F' 0-6-0 No.43373 and auto-coach No.M24405.

37323 MID Tewkesbury General view, circa 1960s, showing class '3F' 0-6-0 No.43373 with a local passenger train.

37324 MID Tewkesbury General view, circa 1960s, showing up and down platforms and station buildings.

37325 MID Tewkesbury General view, circa 1950s, showing up and down platforms and station buildings, with class '3F' 0-6-0 No.43373.

37326 MID Tewkesbury Detailed view, circa 1960s, showing the front of the main station buildings and the underside of the platform canopy.

37470 MID Tewkesbury Post-closure view, circa 1960s, showing up and down platforms and part of station building.

12751 MID Thornbury General view, 15-04-1956.

12752 MID Thornbury General view, 15-04-1956.

37471 MID Thornbury General view, circa 1960s, showing single platform and station building, looking south-east towards Yate.

37472 MID Thornbury General view, circa 1960s, showing single platform and station building, looking towards the terminal buffer stops.

12448 MID Thrapston Midland Road, Pre-grouping view, circa 1912 showing rear elevation of station building.

12449 MID Thrapston Midland Road, General view by Professor Fordyce.

36048 MID Thrapston Midland Road Detailed study of standard MR signal cabin, circa 1962.

37303 MID Thrapston Midland Road General view, circa 1959, showing up and down platforms and station buildings, looking west towards Kettering.

37304 MID Thrapston Midland Road General view, circa 1959, showing up and down platforms, station buildings and signal box, looking west towards Kettering.

37305 MID Thrapston Midland Road General view, circa 1959, showing up and down platforms and station buildings, looking east towards Huntingdon.

37424 MID Thurgarton Detailed study of main station building circa 1960s.

13407 MID Thurgarton Pre-grouping view, circa 1912.

39639 MID Tibshelf & Newton General view, circa 1960s, showing signal cabin.

39640 MID Tibshelf & Newton General view, circa 1960s, showing signal cabin.

11315 SYJ Tickhill & Wadsworth Pre-grouping view, circa 1912.

11316 SYJ Tickhill & Wadsworth Pre-grouping view, circa 1912.

11318 SYJ Tickhill & Wadsworth Pre-grouping view, circa 1912.

11319 SYJ Tickhill & Wadsworth Archive view, showing opening day, 01-12-1910.

11320 SYJ Tickhill & Wadsworth Pre-grouping view, showing first train 01-12-1910.

11321 SYJ Tickhill & Wadsworth Pre-grouping view, circa 1910.

11322 SYJ Tickhill & Wadsworth Pre-grouping view, circa 1910.

11323 SYJ Tickhill & Wadsworth Pre-grouping view, circa 1910, showing goods yard.

11324 SYJ Tickhill & Wadsworth Pre-grouping view, circa 1912.

12466 MID Turvey Pre-grouping view, circa 1912.

37501 MID Turvey Detailed study of main station building, circa 1960s.

37502 MID Turvey General view, circa 1960s, showing up and down platforms and waiting shelter.

12446 MID Twywell General view by Professor Fordyce, circa 1930s.

12447 MID Twywell Pre-grouping view, circa 1912.

37482 MID Tytherington General view, circa 1960s, showing single platform and station building, looking north-west towards Thornbury.

37483 MID Tytherington General view, circa 1960s, showing single platform and station building, looking south-east towards Yate.

12561 MID Ullesthorpe and Lutterworth Pre-grouping view, circa 1912.

35980 MID Ullesthorpe and Lutterworth Post-closure view, circa 1960s, showing station master's house (assumed to have been the original Midland Counties Railway station building).

35981 MID Ullesthorpe and Lutterworth Detailed study of Willey Crossing signal cabin (between Ullesthorpe and Rugby), circa 1962.

35982 MID Ullesthorpe and Lutterworth Post-closure view, circa 1960s, showing staggered platforms after removal of the track.

35795 MID/GER Upper Holloway General view, circa 1960s, showing up and down platforms, station buildings and road overbridge, looking east towards Barking.

35796 MID/GER Upper Holloway General view, circa 1960s, showing up and down platforms and station buildings, looking east.

51922 MID/GER Upper Holloway General view, circa 1972, showing up and down platforms and station buildings.

51924 MID/GER Upper Holloway General view, circa 1972, showing up and down platforms and station buildings.

51925 MID/GER Upper Holloway General view, circa 1972, showing up and down platforms and station buildings.

51926 MID/GER Upper Holloway General view, circa 1972, showing up and down platforms and station buildings.

56592 MID/GWR Upper Lydbrook Post-closure view, circa 1960s, showing up and down platforms and station buildings after removal of track.

56595 MID/GWR Upper Lydbrook Post-closure view showing derelict facilities.

12507 MID Upton-on-Severn Pre-grouping view, circa 1912, showing up and down platforms and station buildings, with unidentified Johnson class '1' 0-4-4T.

37373 MID Upton-on-Severn General view, circa 1960s, showing up and down platforms and station buildings.

37374 MID Upton-on-Severn General view, circa 1960s, showing up and down platforms and station buildings.

37375 MID Upton-on-Severn General view, circa 1960s, showing up and down platforms, station buildings and goods shed.

64496 MID Upton-on-Severn View along platform with branch train arriving, circa 1955/6 F Saunders)

37313 MID Wadborough General view, circa 1960s, showing up and down platforms and station buildings.

35893 MID/LTSR Walthamstow General view, circa 1960s, showing up and down platforms, station buildings and footbridge.

35894 MID/LTSR Walthamstow General view, circa 1960s, showing up and down platforms, station buildings and footbridge.

36051 MID/LTSR Walthamstow General view, circa 1960s, showing rear elevation of station building.

35887 MID/LTSR Wanstead Park General view, circa 1960s, showing up and down platforms, part of station buildings, and signal box.

35888 MID/LTSR Wanstead Park General view, circa 1960s, showing up and down platforms and station buildings.

39680 MID/LTSR Wanstead Park Archive view, showing staff in Tottenham & Forest Gate uniforms.

12736 MID Warmley Pre-grouping view, circa 1912.

35986 MID Warmley General view, circa 1960s, showing up and down platforms and station buildings.

36018 MID Warmley General view, circa 1960s, showing up and down platforms, station buildings and footbridge.

13474 MID Water Orton Pre-grouping view of station before rebuilding.

12467 MID Weldon & Corby Pre-grouping view, circa 1912.

12431 MID Welsh Harp Pre-grouping view by T.F.Budden, circa 1912, with 4-4-0.

36046 MID Welsh Harp Archive view, circa 1910, showing large bogie single near the site of the station, closed in 1903.

12705 MID Wennington Pre-grouping view, circa 1912, showing up and down platforms, station buildings and footbridge, looking east towards Leeds.

37250 MID Wennington General view, circa 1960s, showing up and down platforms, part of station building, and road overbridge, looking west towards Morecambe.

- 37251 MID Wennington General view, circa 1960s, showing up and down platforms and footbridge, looking west towards Morecambe.
- 39600 MID Wennington Detailed view showing Wennington Junction signal cabin, circa 1972.
- 13322 MID West Hampstead Midland Pre-grouping view, circa 1912.
- 37511 MID West Hampstead Midland General view, circa 1960s, showing platforms, station buildings and road overbridge.
- 37512 MID West Hampstead Midland View from bridge, circa 1960s, showing platforms and station buildings.
- 12592 MID Westhouses & Blackwell Pre-grouping view, circa 1912.
- 12737 MID Weston Pre-grouping view, circa 1912.



12593 Wincobank, Pre-grouping view

- 12508 MID Weston-on-Trent Pre-grouping view, circa 1912.
- 13426 MID Whatstandwell General view, circa 1912, showing exterior.
- 13427 MID Whatstandwell Pre-grouping view, circa 1912.
- 13428 MID Whatstandwell Pre-grouping view, circa 1912.
- 13429 MID Whatstandwell General view, circa 1960s.
- 13430 MID Whatstandwell General view, circa 1960s.
- 12517 MID Whissendine Pre-grouping view, circa 1912.
- 12591 MID Whiteborough Pre-grouping view, circa 1912.
- 50980 MID/GWR Whitecroft Postcard view, circa 1912, showing up and down platforms and station buildings.
- 56598 MID/GWR Whitecroft General view, circa 1960s, showing up and down platforms and station buildings with one track removed.
- 56978 MID/GWR Whitecroft Postcard view, circa 1912, showing up and down platforms and station buildings.
- 56982 MID/GWR Whitecroft Post-closure view, circa 1960s, showing up and down platforms with one track removed.

50218 NCC Whitehead Postcard view of Chester Road, circa 1912, from the station footbridge, showing goods rolling stock in the adjacent siding.

21109 MID Whitney-on-Wye General view, circa 1962, showing the single platform and station building, looking towards Hereford.

12640 MID Whitney-on-Wye General view, circa 1960s.

21110 MID Whitney-on-Wye General view, circa 1962, showing single platform and station building, with departing train.

36054 MID Whitney-on-Wye General view, circa 1960s, showing platform and station buildings.

12576 MID Whitwell Pre-grouping view, circa 1912.

13522 MID Wickwar Postcard view, circa 1912, showing up and down platforms, station buildings and goods shed, looking south towards Bristol.

13523 MID Wickwar Pre-grouping view, circa 1912.

37341 MID Wickwar General view, circa 1960s, showing up and down platforms and station buildings, looking south towards Bristol.

37342 MID Wickwar General view, circa 1960s, showing up and down platforms and station buildings, looking north towards Birmingham.

37343 MID Wickwar Platform end view circa 1960s, with approaching train, looking north towards Birmingham.

37344 MID Wickwar General view, circa 1960s, showing up and down platforms and station buildings, looking south towards Bristol.

12656 MID Widmerpool Pre-grouping view, circa 1912.

12565 MID Wigston South Pre-grouping view, circa 1912.

37295 MID Wigston South Post-closure view, circa 1960s, showing staggered up and down platforms, station buildings and level crossing, looking north towards Leicester.

37296 MID Wigston South Post-closure view, circa 1960s, showing staggered platforms, signal cabin and level crossing, looking south towards Rugby.

12593 MID Wincobank & Meadow Hall Pre-grouping view, circa 1912.

12648 MID Wirksworth Pre-grouping view, circa 1912.

12748 MID Wirksworth Pre-grouping view, circa 1912.

12749 MID Wirksworth Pre-grouping view, circa 1912.

12750 MID Wirksworth General view, circa 1960s.

12702 MID Withington Pre-grouping view, circa 1912, showing exterior of station.

12703 MID Withington Pre-grouping view, circa 1912.

12704 MID Withington General view, circa 1930s.

12482 MID Wixford General view by Professor Fordyce.

12489 MID Wixford General view, LMS period, by Professor Fordyce.

13383 MID Wombwell Pre-grouping view, circa 1912.

13384 MID Wombwell Pre-grouping view, circa 1912.

12762 MID Woodchester General view, LMS period, by Professor Fordyce.

37362 MID Woodchester Post-closure view, circa 1960s, showing single platform, station building and level crossing.

37363 MID Woodchester Post-closure view, circa 1960s, showing single platform and station building.

64500 MID Woodchester View along platform with ex MR 0-4-4T LMS 1303 standing in platform awaiting departure on Nailsworth to Stonehouse service; view looking towards Nailsworth; August 1940

35891 MID/LTSR Woodgrange Park General view, circa 1960s, showing up and down platforms and signal box.

35892 MID/LTSR Woodgrange Park General view, circa 1960s, showing up and down platforms and station buildings.
12694 MID Woodhouse Mill Pre-grouping view, circa 1912.
13386 MID Woodlesford Pre-grouping view, circa 1912.
10711 MID/GCR Woodley Pre-grouping view, circa 1912.
10712 MID/GCR Woodley Pre-grouping view, circa 1912.
12536 MID Woodville Pre-grouping view, circa 1912.
55667 MID/GWR Worcester Shrub Hill General view, circa 1960s, showing up and down platforms, station buildings and parcels bridge, looking towards Oxford.
55872 MID/GWR Worcester Shrub Hill Postcard view, circa 1912, showing west end of station with departing 4-4-0.
55873 MID/GWR Worcester Shrub Hill Postcard view, circa 1905, looking east towards the train shed.
55874 MID/GWR Worcester Shrub Hill Postcard view, circa 1912, showing the west end of the station, with 0-4-2T No.835 and Armstrong Goods 0-6-0 No.427.
55875 MID/GWR Worcester Shrub Hill Postcard view, circa 1905, showing the east end of the station, with the train shed visible in the background.
55878 MID/GWR Worcester Shrub Hill Postcard view, circa 1905s, showing interior of train shed, looking west towards Hereford.
55893 MID/GWR Worcester Shrub Hill General view, circa 1960s, looking west along the down platform.
55894 MID/GWR Worcester Shrub Hill General view, circa 1960s, looking eastwards along the up platform.

13524 MID Yate Postcard view, circa 1912, showing up and down platforms, station buildings and footbridge, looking north towards Birmingham.
13525 MID Yate Postcard view, circa 1912, showing up and down platforms, looking north towards Birmingham, with class '2' 4-4-0 No.525.
13526 MID Yate Pre-grouping view, circa 1912.
13527 MID Yate Pre-grouping view, circa 1912.
13528 MID Yate Pre-grouping view, circa 1912.
13529 MID Yate General view, 26-09-1959.
37339 MID Yate General view, circa 1960s, showing up and down platforms and station buildings, looking south towards Bristol.
37340 MID Yate General view, circa 1960s, showing up and down platforms, station buildings and footbridge, looking north towards Birmingham.
39631 MID Yate Detailed view showing Midland signals at Yate South Junction, circa 1930s.
37449 MID Ystalyfera Post-closure view, circa 1960s, showing single platform and station building (closed 1950).
37450 MID Ystalyfera Post-closure view, circa 1960s, showing platform, station building and road overbridge.

Stanley C Jenkins 2005