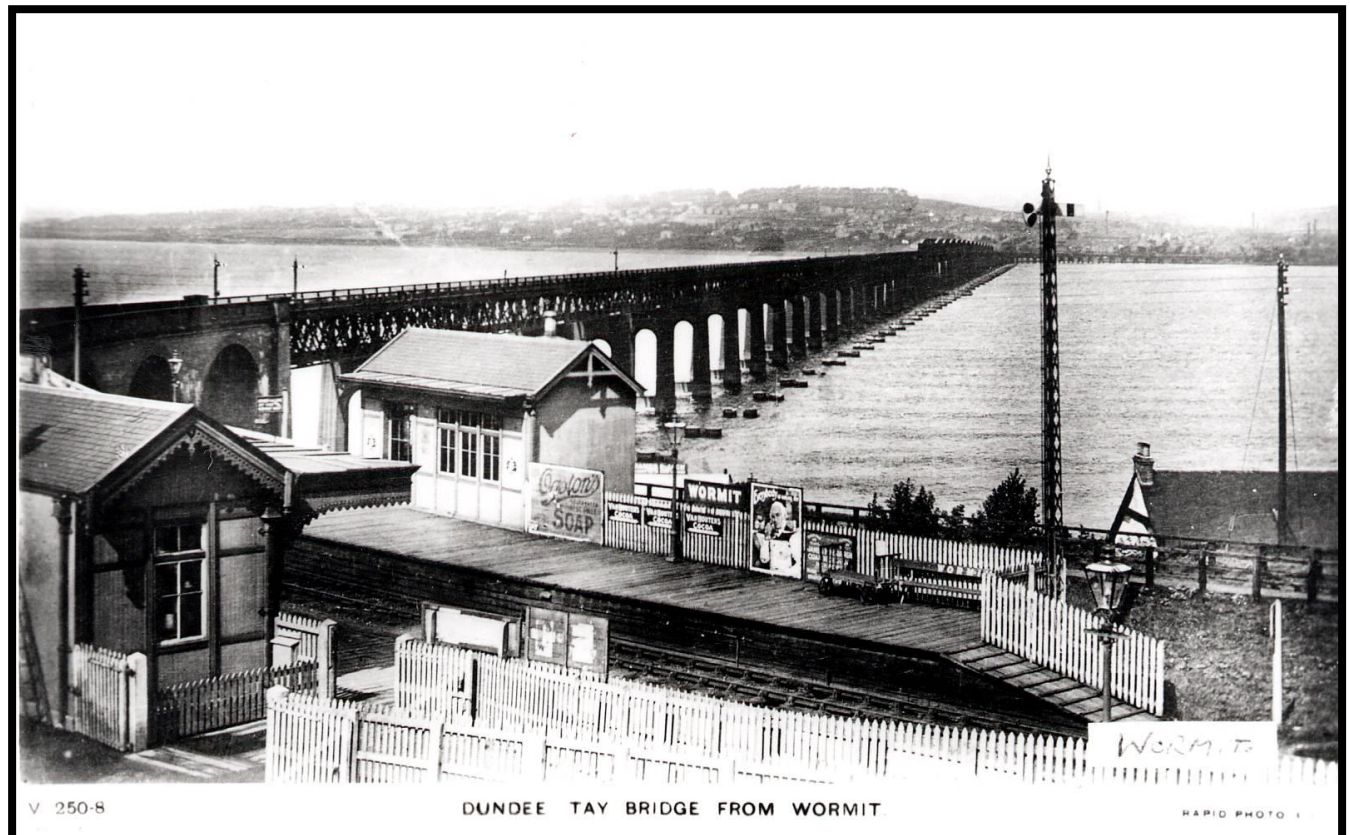


# NORTH BRITISH RAILWAY STATIONS

LENS OF SUTTON ASSOCIATION  
List 7 (Issue 3 January 2020)



V 250-8

DUNDEE TAY BRIDGE FROM WORMIT

HARID PHOTO 1

**Wormit circa 1912 (52641)**

# LENS OF SUTTON ASSOCIATION

## NORTH BRITISH RAILWAY STATIONS

**(Including the Dundee & Arbroath and Dumbarton & Balloch joint lines)**

- 11792 NBR Abbey Town Pregrouping view.
- 52005 NBR Abbeyhill General view, circa 1930s, showing up and down platforms and station buildings.
- 52029 NBR Abbotsford Ferry Postcard view, circa 1912, showing road above station, and approaching train.
- 52030 NBR Abbotsford Ferry General view, circa 1930s, showing single platform and station buildings.
- 52006 NBR Abbotsford Ferry Panoramic view, circa 1912, from nearby hillside.
- 52007 NBR Abercharder Postcard view circa 1912, showing single platform, station building, goods siding and overbridge.
- 52008 NBR Aberdour Postcard view, circa 1912, showing up and down platforms, station buildings and footbridge after arrival of a train.
- 52027 NBR Aberdour General view, circa 1930s, showing up and down platforms, station buildings and footbridge.
- 52028 NBR Aberdour Postcard view, circa 1912s, showing up and down platforms, station buildings and footbridge, by "John M. Logie, Chemist, Aberdour".
- 52025 NBR Aberfoyle "Watts' Series" postcard, circa 1912, showing NBR 0-6-0 and train entering station.
- 52026 NBR Aberfoyle General view, circa 1930s, with LNER steam railmotor in platform.
- 52009 NBR Aberfoyle Postcard view of circa 1912 showing "coaches starting for the Trossachs".
- 52010 NBR Aberlady Postcard view, circa 1912, showing main station building with a train in the platform.
- 52011 NBR Abernethy General view, showing single platform and station buildings.
- 52013 D&B(NBR/CAL) Alexandria General view, circa 1930s, showing up and down platforms, station buildings and signal cabin.
- 52001 NBR Alloa Panoramic view of island platform from the west during the NBR era circa 1912, with 'Glen' class 4-4-0 in one of the terminal bays.
- 52002 NBR Alloa General view, circa 1920s, showing west end of island platform with unidentified 'Glen' class 4-4-0 and other locomotives on passenger trains.
- 52003 NBR Alloa Detailed view of street level entrance, from commercial postcard of circa 1912.
- 52024 NBR Alloa General view from platforms, circa 1930s, looking west towards the overbridge.
- 52004 NBR Alva General view, circa 1912, showing single platform, station building and goods shed, looking east towards the terminal buffer stops.
- 52012 NBR Alva General view looking east towards the terminal buffer stops.
- 52014 NBR Angerton Detailed view of station building, circa 1912.
- 52015 NBR Anniesland General view, circa 1930s, showing platforms, signal cabin and nearby gas holders.
- 52016 NBR Anstruther General view, circa 1930s, showing up and down platforms, station buildings and footbridge.
- 52017 D&A(CAL/NBR) Arbroath Postcard view, circa 1912, showing the "new railway station".
- 52038 D&A(NBR/CAL) Arbroath Detailed view of platforms, circa 1930s, showing underside of canopies, etc.
- 52039 D&A(NBR/CAL) Arbroath General view, circa 1920s, showing detail of street level station building.

52018 NBR Ardlui General view, circa 1930s, showing island platform and station building.

52019 NBR Arisaig Detailed view of signal box, circa 1960s.

52031 NBR Arisaig Postcard view, circa 1912, showing up and down platforms, signal cabin and station building.

52032 NBR Arisaig General view, circa 1930s, showing waiting shelter.

52033 NBR Arisaig General view, circa 1930s, showing signal cabin and part of station building.

52037 NBR Arisaig Postcard view, circa 1912, showing "Arisaig Station and Moidart Mountains".

52020 NBR Armadale General view, circa 1930s, showing up and down platforms, station buildings and footbridge.

52035 NBR Arrochar & Tarbet View from platform end, probably circa 1950s, showing departing train.

52036 NBR Arrochar & Tarbet General view, circa 1930s, showing platform, station building and signal cabin.

52021 NBR Auchtermuchty Detailed view of station buildings, circa 1930s.

52034 NBR Auchtermuchty Detailed view, circa 1930s, looking down on station building from the bridge.

52022 NBR Avonbridge General view, circa 1930s, showing platform, station building and level crossing, with goods loading bank to the left.

52023 NBR Ayton General view, circa 1930s, showing up and down platforms, station buildings and footbridge.

52042 NBR Back o'Loch General view, circa 1930s, showing up and down platforms and waiting shelters

52043 NBR Balado General view, circa 1930s, showing platform and station building.

52109 NBR Balfron General view, circa 1930s, showing up and down platforms and station buildings, with overbridge in the distance.

52044 D&B(NBR/CAL) Balloch General view showing up and down platforms and station buildings, circa 1930s.

52048 D&B(NBR/CAL) Balloch General view, looking north towards Loch Lomond, circa 1930s.

52045 D&B(NBR/CAL) Balloch General view from bridge, circa 1930s.

52055 D&B(NBR/CAL) Balloch Postcard view, circa 1912.

52049 D&B(NBR/CAL) Balloch Pier General view from south end of platform, looking towards Loch Lomond.

52046 D&B(NBR/CAL) Balloch Pier Detailed view of station building, circa 1960s.

52047 D&B(NBR/CAL) Balloch Pier General view showing Platform One, looking south towards Glasgow circa 1930s.

52105 NBR Balmore Panoramic view of station and goods yard photographed from road overbridge circa 1930s.

52050 NBR Banavie Postcard view, circa 1912, showing single platform, station building and signal cabin.

52051 NBR Banavie Postcard view, circa 1906, by "Stengel & Co" of London", showing four-wheeled coaching stock in platform.

52052 NBR Banavie General view, circa 1930s, showing platform and station building, looking towards the level crossing.

52053 NBR Banavie General view showing station building, circa 1930s.

52093 NBR Banavie Pier Postcard view, circa 1912, showing steamer Condolier alongside pier, with NBR 'West Highland Bogie' 4-4-0 No.343 on adjacent track.

52104 NBR Bangour Postcard view of terminus, circa 1912, showing branch train in terminus.

52091 K&B (Cal/NBR) Banknock View from bridge, circa 1960, showing up and down platforms and station buildings

52054 NBR Barnhill General view, circa 1930s, showing up and down platforms from bridge.  
11803 NBR Barrasford Pregrouping view.  
11804 NBR Barrasford Pregrouping view.  
52056 D&A(NBR/CAL) Barry Links Postcard view, circa 1912, showing platforms, station buildings and footbridge.  
52057 NBR Bathgate General view of new station around time of re-opening in 1987.  
52059 NBR Bathgate Lower General view, circa 1930s, showing platform and station building.  
52097 NBR Bathgate Lower General view, circa 1912, showing local train alongside single platform.  
52096 NBR Bathgate Upper Postcard view, circa 1912, showing train entering crowded platforms.  
52058 NBR Bathgate Upper General view, circa 1930s, showing up and down platforms, station buildings and footbridge.  
52060 NBR Beasdale Detailed view of station building, circa 1930s.  
11818 NBR Bellingham Pregrouping view.  
11819 NBR Bellingham Pregrouping view.  
52061 NBR Bents General view, circa 1912, showing single platform and station building.  
52062 NBR Bervie Postcard view, circa 1912, showing branch train in single platform terminus  
52075 NBR Bishopbriggs General view, circa 1930s, showing up and down platforms, station buildings and footbridge.  
52063 NBR Bishopbriggs General view, circa 1930s, showing up and down platforms, station buildings and footbridge.  
52064 NBR Bishopbriggs Postcard view, circa 1912, showing up and down platforms, station buildings and footbridge.  
52065 NBR Blackford Hill General view, circa 1930s, showing up and down platforms, station buildings and footbridge.  
52095 NBR Blackstone General view, circa 1930s, showing sheeted goods wagons and single platform.  
52110 NBR Blairadam General view, circa 1930s, showing up and down platforms with station building to right.  
52111 NBR Blairadam General view, circa 1920s, showing up and down platforms, station buildings and footbridge.  
52066 NBR Blairadam General view, circa 1930s, showing up and down platforms and station building.  
52067 NBR Blanefield General view from bridge, circa 1930s, showing island platform, station building and good shed.  
52103 NBR Blanefield General view, circa 1930s, showing trains alongside island platform.  
52112 NBR Blanefield General view, circa 1930s, showing island platform and footbridge, with signal cabin to left.  
52069 NBR Boarhills General view, circa 1930s, showing station building and single platform.  
52068 NBR Bo'ness General view of terminus, circa 1930s, looking north with the single platform and station buildings on the right.  
52070 NBR Bogside General view, circa 1930s, showing up and down platforms and partial view of station buildings.  
52071 NBR Bonnybridge General view, circa 1960s, showing up and down platforms and station buildings  
52101 NBR Bonnyrigg General view, circa 1890s, showing up and down platforms, station buildings and footbridge from the level crossing.  
52102 NBR Bonnyrigg General view, circa 1930s, showing up and down platforms, station buildings and footbridge, from the level crossing.  
52072 NBR Bonnyrigg General view, circa 1930s, showing up and down platforms, station buildings and footbridge, looking towards the level crossing.

52073 NBR Bothwell General view, circa 1950s, showing up and down platforms and station buildings, with 'N2' class 0-6-2T arriving with local train.

52074 NBR Bowhouse General view, circa 1930s.

52106 NBR Bowland General view, circa 1930s, showing up and down platforms and station buildings.

52098 NBR Bowland General view, circa 1930s, showing up and down platforms and station buildings.

52076 NBR Bowland General view, circa 1930s, showing up and down platforms and timber station buildings.

52077 NBR Bowling General view, circa 1930s, showing up and down platforms, station buildings, signal cabin and footbridge.

52099 NBR Bowling General view, circa 1930s, showing up and down platforms, station buildings and signal cabin, with steam vessels visible in the distance.

52107 NBR Bridge of Earn General view, circa 1930s, showing up and down platforms, station buildings and footbridge.

52078 NBR Bridge of Earn Postcard view, circa 1912, showing up and down platforms, station buildings and road overbridge.

52079 NBR Bridge of Orchy General view, circa 1930s, showing platform, station building and signal cabin.

52080 NBR Broomieknowe General view, circa 1930s, showing single platform and part of station buildings.

52081 NBR Broomlee Detailed view of signal cabin and station building, circa 1912.

52092 NBR Broomlee Detailed view of station building and signal cabin from postcard of circa 1912.

52094 NBR Broomlee General view after closure.

52082 D&A(CAL/NBR) Broughty Ferry General view, circa 1930s, showing up and down platforms, station buildings and footbridge.

52083 D&A(CAL/NBR) Broughty Ferry Postcard view, circa 1912, showing platforms and station building.

52084 D&A(NBR/CAL) Broughty Ferry Postcard view, circa 1925, showing up and down platforms, station buildings and footbridge.

52113 D&A(NBR/CAL) Buddon Camp Postcard view, circa 1914, showing cavalry unit unloading at "Buddon Camp Railway Station".

52087 NBR Buckhaven General view, circa 1930s, showing platform, station building and goods yard.

52085 NBR Buchlyvie General view, circa 1930s, showing up and down platforms station building, signal cabin and level crossing.

52086 NBR Bucklyvie Postcard view, circa 1912, showing up and down platforms, station buildings and footbridge, with train in distance.

11797 NBR Burgh Circa 1930s view.

11795 NBR Burgh Pregrouping view.

11796 NBR Burgh Pregrouping view.

52100 NBR Burnbank General view, circa 1930s, showing up and down platforms from overbridge, with obtrusive telegraph pole in centre of picture.

52089 NBR Burnmouth Panoramic view, circa 1912, showing platforms and station buildings, with NBR 0-6-0 in right foreground.

52090 NBR Burntisland General view, circa 1912, showing up and down platforms and station buildings from beneath the footbridge.

52108 NBR Burntisland Detailed view of station building on 26th June 1889.

52114 NBR Burntisland General view, circa 1958, showing up and down platforms, station buildings and footbridge.

52117 NBR Cairneyhill Postcard view, circa 1912, showing up and down platforms and station buildings framed in footbridge.

52118 NBR Cairneyhill General view, circa 1912, showing up and down platforms, station buildings and footbridge.

52138 NBR Cairneyhill Postcard view, circa 1912, showing up and down platforms, station buildings and footbridge.

52119 NBR Caldercruix General view, circa 1930s, showing up and down platforms framed by footbridge.

52116 NBR Cambus General view, circa 1930s, showing up and down platforms and part of station building from overbridge.

52136 NBR Cambus General view, circa 1930s, showing up and down platforms and station buildings from footbridge.

52137 NBR Cameron Bridge General view, circa 1930s, showing platform and station building.

52120 NBR Cameron Bridge General view from overbridge, circa 1930s.

52121 NBR Cameron Bridge Postcard view, circa 1912, showing station building.

52159 NBR Cameron Bridge General view, circa 1930s, showing platform and station buildings.

52122 NBR Campsie Glen General view, circa 1930s, showing single platform and station building.

52123 NBR Campsie Glen General view, circa 1930s (similar to 52122).

52171 NBR Campsie Glen General view, circa 1930s, showing single platform and station building.

52172 NBR Canonbie General view, circa 1930s, showing single platform, station building and road overbridge.

52124 NBR Canonbie Postcard view, circa 1912, showing station from the overbridge, with train in the single platform.

52158 NBR Canonbie Postcard view, circa 1912, showing single platform and station buildings.

52125 NBR Cardenden Postcard view, circa 1912, showing up and down platforms and station buildings, with NBR 2-4-0 on passenger working.

52148 NBR Cardenden Detailed view of the station building, circa 1912.

52126 NBR Cardrona General view, circa 1930s, showing station building, level crossing and single platform.

52145 NBR Cardross General view, circa 1930s, showing up and down platforms and station buildings.

52127 D&A(CAL/NBR) Carnoustie Postcard view, circa 1912, showing "Railway Crossing, Carnoustie".

52155 D&A(CAL/NBR) Carnoustie Postcard view, circa 1912, showing up and down platforms and stations buildings

52169 NBR Castle Cary General view, circa 1930s, showing up and down platforms and station buildings.

52128 NBR Cauldcots View from bridge, circa 1930s, showing up and down platforms and station buildings.

52129 NBR Charlestown Postcard view, circa 1912, showing station building and single platform looking east towards the terminal buffer stop.

52181 NBR Charlestown View of single platform and station building, circa 1930s.

52130 NBR Clackmannan General view, circa 1930s, showing single platform and standard NBR type station building.

52131 NBR Clovenfords General view, circa 1912, showing single platform, station buildings and goods yard.

52176 NBR Clovenfords General view, circa 1930s, showing single platform and station building.

52132 NBR Clydebank Central General view, circa 1930s, showing up and down platforms, station buildings and footbridge.

52133 NBR Clydebank East General view from platform, circa 1930s.

52134 NBR Coatbridge Central Postcard view, circa 1912, showing "Sunnyside Road, Coatbridge", with station in distance.

52135 NBR Cockburnspath Postcard view, circa 1912, showing "NBR Station, Cockburnspath".

52177 NBR Cockburnspath View, from overbridge, circa 1930s.

52154 NBR Collessie General view showing single platform and station building, circa 1930s.

52175 NBR Corpach General view, circa 1930s, showing single platform and station building.

52178 NBR Corrour View from train, circa 1930s.

52161 NBR Corstorphine General view of platforms, circa 1930s, looking east towards Edinburgh.

52157 NBR Cowdenbeath Postcard view, circa 1912, showing up and down platforms, station buildings and approaching train, photographed from bridge.

52165 NBR Cowdenbeath View of overbridge from street, circa 1968.

52140 NBR Cowlairs Junction General view, circa 1930s, showing island platform and station building.

52141 NBR Craigendoran Pier Postcard view, circa 1912, showing crowded platform scene.

52142 NBR Craigendoran Pier Panoramic view, circa 1912, showing terminal with steamer in distance.

52152 NBR Craigendoran Postcard view, circa 1912, showing up and down platforms and station building.

52163 NBR Craigendoran General view from adjacent road, circa 1930s, showing part of signal cabin with platform in the distance.

52170 NBR Craigendoran General view, circa 1930s, showing up and down platforms, looking towards Glasgow.

52173 NBR Craigendoran General view, circa 1930s, showing up and down platforms, looking north towards Fort William.

52174 NBR Craigendoran General view, circa 1930s.

52143 NBR Craiglockart View from bridge, circa 1930s, showing up and down platforms.

52162 NBR Crianlarich Upper General view, circa 1930s, showing island platform and station building, looking north towards Fort William.

52180 NBR Crianlarich Upper 'Glen' class 4-4-0 No.496 *Glen Moidart* taking water at south end of station, circa 1930s.

52144 NBR Crail General view, circa 1930s, showing up and down platforms, station buildings and footbridge.

52168 NBR Crail General view, circa 1912, showing NBR 4-4-0 No.598 in station.

52179 NBR Crail General view, circa 1930s, showing up and down platforms, station buildings, signal cabin and footbridge.

52146 NBR Crook of Devon General view, circa 1930s, showing single platform and station building, looking east towards Kinross.

52166 NBR Crook of Devon H.A.Valance view, circa 1950s, showing single platform, station building and level crossing looking east towards Kinross.

52167 NBR Crook of Devon Postcard view, circa 1912, showing station building and platform looking west towards Alloa.

52147 NBR Croy General view, circa 1930s, showing up and down platforms and station buildings from bridge.

52151 NBR Croy General view, circa 1930s, showing up and down platforms, station buildings and road overbridge.

52150 NBR Cupar Panormaic view from bridge, circa 1920s, showing up and down platforms and station buildings.

52115 NBR Cupar General view, circa 1912, showing up and down platforms and station buildings.

52150 NBR Cupar Panoramic view from bridge, circa 1920s, showing up and down platforms and station buildings.

52149 NBR Culross General view, circa 1930s, showing up and down platforms with one track removed.

52153 NBR Culross Postcard view, circa 1912, showing up and down platforms, station buildings and footbridge.

52185 NBR Dairsie General view, circa 1930s, showing up and down platforms, station buildings and signal cabin.

52186 NBR Dalkeith Panormamic view of station and church, circa 1930s.

52187 NBR Dalkeith General view, circa 1930s, showing platforms and goods shed.

52188 NBR Dalkeith General view looking east towards terminal buffer stops, circa 1930s.

52189 NBR Dalkeith General view, looking west towards Edinburgh, circa 1930s.

52190 NBR Dalmeny General view, circa 1912, showing up and down platforms and station buildings, with approaching train.

52191 NBR Dalmeny Staff group on platform, circa 1912.

52216 NBR Dalmuir Postcard view, circa 1912, showing up and down platforms, station buildings and footbridge.

52192 D&B(NBR/CAL) Dalreoch General view showing platforms and station buildings, looking west towards Fort William circa 1960s.

52193 D&B(NBR/CAL) Dalreoch General view looking east, circa 1930s, showing up and down platforms and station buildings.

52217 D&B(NBR/CAL) Dalreoch General view of platforms, circa 1920s, looking east towards Glasgow.

52194 NBR Dirleton General view, circa 1930s, showing single platform and station building.

52195 NBR Dollar H.A. Vallance photograph showing railbus arriving from Stirling circa 1959.

52196 NBR Dollar General view, circa 1950s, showing station and goods yard looking west towards Stirling.

52197 NBR Dolphinton Postcard view, circa 1912, showing signal cabin and station building.

52198 NBR Dolphinton General view, circa 1960s, looking east from the road overbridge with the connecting line to the CR in the foreground.

52199 NBR Drem Postcard view, circa 1912, showing up and down platforms, station buildings, footbridge and overbridge.

52200 NBR Drumburgh General view, circa 1930s, showing up and down platforms from the road overbridge.

52205 NBR Drumburgh View of island platform and rear of station building from bridge, circa 1930s

52201 NBR Drymen General view, circa 1930s, showing up and down platforms and station buildings.

52202 NBR Duddingstone General view, circa 1930s, showing up and down platforms, station buildings and footbridge, photographed from the road bridge.

52203 NBR Dullater General view, circa 1930s, showing up and down platforms, station buildings and footbridge.

51198 D&B(NBR/CAL) Dumbarton Postcard view, circa 1912, showing details of station building and platform canopies.

52204 D&B(NBR/CAL) Dumbarton General view of platforms and station building circa 1930s.

52206 NBR Dumgoyne General view, circa 1930s, showing platform, station building and level crossing.

52207 NBR Dunbar General view, circa 1930s, showing up and down platforms, station buildings and footbridge, looking south towards London.

52208 NBR Dunfermline Lower General view, looking east circa 1930s, showing platforms.

52209 NBR Dunfermline Upper General view looking, circa 1930s, showing up and down platforms, station buildings and good shed from the Inglis Street overbridge.

52210 NBR Duns General view, circa 1920s, showing up and down platforms, station buildings and footbridge.



52213 NBR Dundee West General view from platforms, circa 1930s.  
52214 NBR Dunfermline Lower Postcard view, circa 1914, showing naval ratings in station approach.  
52215 NBR Dunfermline Upper General view, looking east circa 1960s, with class '101' multiple unit formation in platforms.  
52211 NBR Dysart Postcard view, circa 1912, showing up and down platforms and station buildings.  
52212 NBR Dysart Postcard view, circa 1912, showing up and down platforms and station buildings.

52221 NBR Earlston Postcard view, circa 1912, showing up and down platforms, station buildings and footbridge.  
52222 NBR Earlston Postcard view, circa 1912, showing up and down platforms and station buildings.  
52224 NBR East Fortune Postcard view from bridge, circa 1912, showing up and down platforms, station buildings and approaching train.  
52225 NBR East Grange General view, circa 1930s, showing up and down platforms and station buildings.  
52226 NBR East Linton General view, circa 1930s, showing up and down platforms, station buildings and footbridge, looking north towards Edinburgh.  
52227 NBR East Newport General view, circa 1930s, showing up and down platforms and station buildings.  
52228 NBR East Newport Postcard view, circa 1912, showing up and down platforms and station buildings.  
52223 NBR Easterhouse General view, circa 1930s, showing up and down platforms and station buildings from bridge.  
52236 NBR Eddlestone General view, circa 1930, showing up and down platforms and station building.  
52231 NBR Eddlestone Postcard view by "J.G.Ballantyne, Eddlestone", circa 1912, showing up and down platforms, crossing loop and footbridge.  
52232 NBR Eddlestone General view from level crossing circa 1930s, showing up and down platforms and station building, with crossing loop removed.  
52230 NBR Edinburgh Waverley Panoramic view of station approaches, circa 1930s.  
52233 NBR Elie General view, circa 1930s, showing up and down platforms, station buildings, and footbridge.  
52234 NBR Eyemouth Postcard view, circa 1912, showing terminus from the south.  
52235 NBR Eyemouth Postcard view, circa 1912, showing "station and Victoria Road".

52262 NBR Falkirk View from road bridge, circa 1960s, showing up and down platforms, station buildings and footbridge.  
52265 NBR Falkirk Camelon General view, circa 1930s, showing island platform and station building.  
52261 NBR Falkirk Grahamston Postcard view, circa 1905 showing staff assembled in front of main station building.  
52264 NBR Falkirk Grahamstown General view, circa 1930s, showing island platforms and station buildings.  
52260 NBR Falkirk High General view, circa 1950s, showing station buildings.  
52263 NBR Falkirk High View from signal, showing up and down platforms and station buildings, circa 1930s.  
52242 NBR Falkland Road General view, circa 1930s, showing up and down platforms, station buildings and signal cabin.  
52243 NBR Falkland Road View from bridge, circa 1930s, showing up and down platforms, station buildings and signal cabin.  
52240 NBR Falstone General view, circa 1930s, showing part of station buildings.  
52241 NBR Falstone General view, circa 1930s, showing single platform and details of station buildings.

11820 NBR Falstone Pregrouping view.  
 11821 NBR Falstone Pregrouping view.  
 11822 NBR Falstone Pregrouping view.  
 52244 NBR Fauldhouse Platform view, circa 1930s, showing station buildings.  
 52245 NBR Fauldhouse Postcard view, circa 1912, showing station building and single platform.  
 52257 NBR Fountainhall Postcard view, circa 1912, showing up and down platforms and station building, with detail of water column.  
 52258 NBR Fountainhall General view, circa 1930s, showing up and down platforms and part of station buildings.  
 52246 NBR Fort Augustus Pier Panoramic view, circa 1912, showing terminal from nearby hillside.  
 52247 NBR Fort Augustus General view of terminus, looking north circa 1900, with HR 4-4-0 No.48 on passenger working.  
 52248 NBR Fort Augustus View looking north towards terminal buildings circa 1930s.  
 52249 NBR Fort William Looking south from platform ends, circa 1930s, showing station buildings in distance.  
 52250 NBR Fort William Edwardian view, circa 1912, showing NBR 4-4-0 No.227 in platform.  
 52251 NBR Fort William Postcard view, looking south, circa 1912.  
 52252 NBR Fort William General view looking south towards the terminal buffer stops, early 1900s.  
 52253 NBR Fort William Detailed view of concourse, early 1900s.  
 52254 NBR Fort William View of station entrance, circa 1930s, showing contemporary motor transport with 'K2' class 2-6-0 in background.  
 52255 NBR Fort William View of south end of station, circa 1930s, showing arrival of The Northern Belle behind No.9496.  
 52256 NBR Fort William Postcard view, circa 1912, showing buffer stops.  
 52259 NBR Fushiebridge General view, circa 1930s, showing up and down platforms, station buildings and overbridge.

52270 NBR Gairloch General view, circa 1903, showing island platform, station building and goods yard.  
 52271 NBR Galashiels General view, circa 1920s, showing up and down platforms, station buildings and footbridge, looking south towards Carlisle.  
 52272 NBR Garelochhead General view, circa 1930s, showing island platform, station building and goods yard.  
 52298 NBR Garelochhead General view, circa 1930s, showing island platform and station building.  
 52273 NBR Gargunnoch Detailed view of signal cabin and level crossing.  
 52274 NBR Garrowhill General view, circa 1930s, showing up and down platforms, station buildings and footbridge.  
 52303 NBR Gartmore General view, circa 1930s, showing single platform, station building and loading dock, looking towards the road overbridge.  
 52275 NBR Gartness Postcard view, circa 1912, showing station building and signal cabin.  
 52293 NBR Gartness General view, circa 1930s, showing platform, station building and signal cabin.  
 52276 NBR Gateside Postcard view, circa 1912, showing station from Lomond Hill.  
 52277 NBR Gifford Postcard view, looking north circa 1912, showing branch train in single platform terminus.  
 52299 NBR Gifford Postcard view, looking north circa 1912, showing passenger station and goods yard.  
 52278 NBR Gilmerton Panoramic view, circa 1930s, showing station and coal mines from nearby road.  
 52279 NBR Gilnockie General view, circa 1930s, showing single platform, waiting shelter and level crossing, looking south towards Riddings Junction.  
 52290 NBR Glasgow Queen Street Postcard view, circa 1912, showing entrance to station.

52280 NBR Glen Douglas View of station from nearby hillside, circa 1930s.

52288 NBR Glen Douglas General view, circa 1930s, showing island platform.

52296 NBR Glen Douglas View from loading dock, circa 1930s.

52281 NBR Glenfarg General view, circa 1930s, showing up and down platforms, station buildings and footbridge.

52291 NBR Glenfarg General view, circa 1900, showing up and down platforms, station buildings and footbridge from road overbridge.

52282 NBR Glenfinnan Postcard view, circa 1912s, showing station from nearby hillside.

52283 NBR Gordon General view, circa 1900, showing single platform, station building and road overbridge.

52297 NBR Gordon General view, circa 1930s, showing passenger platform, station buildings and goods yard.

52284 NBR Gorebridge View of station from hillside, circa 1930s.

52294 NBR Gorebridge General view, circa 1930s, showing platform and signal cabin from bridge.

52300 NBR Grantshouse Postcard view, circa 1912, showing station building and goods shed from the bridge.

52302 NBR Grantshouse General view, circa 1930s, showing up and down platforms, station buildings and signal cabin.

52292 NBR Granton General view, circa 1930s, showing single platform and station building, with line of open wagons on adjacent siding.

52285 NBR Greenlaw General view, circa 1930s, showing up and down platforms, station buildings and footbridge.

52289 NBR Greenlaw General view, circa 1930s, showing up and down platforms, station buildings and footbridge.

52286 NBR Gretna General view, circa 1912, showing single platform and station building.

52287 NBR Guard Bridge General view, circa 1930s, showing passenger platform, station buildings and part of goods yard.

52301 NBR Gullane Postcard view, looking north circa 1912, showing passenger working in single platform terminus.

52308 NBR Haddington Panoramic view, circa 1964, showing the station building, single platform and goods shed, looking east towards the terminal buffer stop.

52320 NBR Haddington Platform view, circa 1930s, showing branch train alongside single platform.

52309 NBR Hamilton Platform view, circa 1930s, showing station buildings and footbridge.

52310 NBR Hamilton General view, circa 1930s, showing LNER steam railcar alongside station building.

11827 NBR Harker Circa 1930s view.

52311 NBR Hassendean General view, circa 1930s, showing up and down platforms, station buildings and footbridge.

52312 NBR Hawick General view, circa 1930s, showing up and down platforms, station buildings and footbridge.

52323 NBR Hawick General view, circa 1930s, showing up and down platforms, station buildings, footbridge, and Hawick South Signal Cabin.

52324 NBR Hawick View of goods yard, early 1900s, showing rear of station building.

52325 NBR Hawick Postcard view, circa 1912, showing station approach and rear of station building.

52322 NBR Hawthornden for Rosewell Postcard view, circa 1912, showing up and down platforms, station buildings and footbridge, looking north towards Edinburgh. (The station was renamed Rosewell & Hawthornden in 1928).

52313 NBR Helensburgh Upper General view, circa 1930s, showing 'Glen' class 4-4-0 No.221 *Glen Orchy* alongside island platform.

52307 NBR Helensburgh Upper General view, circa 1930s, showing island platform and station building.

52319 NBR Helensborough Upper General view, circa 1930s, showing island platform and station building.

52314 NBR Heriot Postcard view, circa 1912, showing station master's house and signal cabin.

52315 NBR Heriot View from level crossing, circa 1930s, showing single platform and station building.

52316 NBR Hillfoot General view, circa 1930s, showing up and down platforms and station building from bridge.

52321 NBR Hillfoot General view, circa 1930s, showing signal cabin in foreground and station in background.

11800 NBR Humshaugh Pregrouping view.

11801 NBR Humshaugh Pregrouping view.

11802 NBR Humshaugh Pregrouping view.

52317 NBR Hyndland Detailed view of station building, showing details of facade circa 1930.

52318 NBR Hyndland General view of platforms, circa 1950s.

52326 NBR Hyndland Platform view, circa 1950s, showing station buildings.

52330 NBR Innerleithen General view looking west towards Edinburgh circa 1912, with 'West Highland Bogie' No.394 on Galashiels passenger working.

52331 NBR Innerleithen General view, circa 1930s, showing staggered up and down platforms, footbridge and part of station buildings, looking east towards Galashiels.

52335 NBR Innerleithen General view, circa 1912, looking west towards Edinburgh, with NBR staff on platform.

52332 NBR Invergloy General view, circa 1950s, showing passenger platform (closed 1933) and goods siding.

52333 NBR Inverkeithing General view, circa 1912, showing up and down platforms and station building.

52334 NBR Inverkeithing Postcard view, circa 1912, showing platforms and station buildings from lineside, with goods train passing behind a bush.

52336 NBR Jamestown General view, circa 1890s, showing up and down platforms, station buildings, signal cabin and level crossing.

52337 NBR Jamestown General view, circa 1930s, showing up and down platforms, signal cabin, level crossing and waiting shelter.

52338 NBR Jedburgh General view, looking south circa 1930s, showing platforms, train shed and engine shed.

52340 NBR Jedfoot General view, circa 1930s, showing single platform and station building.

52341 NBR Jedfoot General view, looking towards level crossing, circa 1930.

52339 NBR Jordanhill General view, circa 1930s, showing up and down platforms, station buildings and footbridge.

52345 NBR Kelso General view, circa 1930s, showing up and down platforms with signal cabin framed by footbridge.

52365 NBR Kelso General view, circa 1930s, showing up and down platforms, main station building, signal cabin and footbridge.

52346 NBR Kershopefoot General view, circa 1930s, showing up and down platforms and station buildings.

11831 NBR Kershopefoot Pregrouping view.

11832 NBR Kershopefoot Pregrouping view.

11823 NBR Kielder Pregrouping view.

52347 NBR Kielder General view, circa 1930s, showing station in distance.

52371 NBR Kincardine Panormamic view, circa 1930s, showing up and down platforms, station buildings and good yard.

52372 NBR Kincardine General view, circa 1930s, showing up and down platforms and part of standard NBR station building.

52348 NBR Kilbagie General view circa 1938 showing single platform, station building and road overbridge.

52349 NBR Kilconquhar Postcard view, circa 1912, showing single platform and station building.

52366 NBR Kilconquhar General view, circa 1930s, showing single platform, station building and goods loading bank.

52350 NBR Killearn Postcard view, circa 1912, showing single platform and station building.

52351 NBR Kilmany General view, circa 1930s, showing up and down platforms and station building, with one track removed.

52369 NBR Kilpatrick General view, circa 1920s, showing up and down platforms, station buildings and footbridge.

52353 NBR Kilsyth New General view, circa 1930s, showing platform and station buildings.

52354 NBR Kincardine General view, circa 1912, showing platform and standard NBR station building.

52367 NBR Kings Barns General view, circa 1950s, showing up and down platforms and station buildings.

52368 NBR Kings Barns General view, circa 1930s, showing up and down platforms, station buildings and water tower.

52355 NBR Kinniel General view, circa 1930s, showing single platform with open goods wagons on adjacent siding.

52356 NBR Kinross Postcard view, circa 1912, showing island platform and station building.

52357 NBR Kippen Postcard view, circa 1912, showing up and down platforms, station buildings and signal cabin, looking towards the level crossing.

52358 NBR Kirkandrews View of single platform and station buildings from bridge, circa 1930s.

52359 NBR Kirkbank General view, circa 1930s, showing single platform and station building.

52373 NBR Kirkbank View of station from across fields, circa 1930s.

52360 NBR Kirkbride Postcard view, circa 1912, showing single platform and station building.

52361 NBR Kirkcaldy Postcard view, circa 1912, showing up and down platforms and station buildings.

52364 NBR Kirkcaldy Postcard view, circa 1912, showing up and down platforms and station buildings.

52363 NBR Kirkintilloch General view, circa 1930s, showing platforms, station buildings and footbridge.

52370 NBR Kirkintilloch Postcard view, circa 1912, showing "Railway Station, Kirkintilloch", by "D.MacCloud, Herald Office, Kirkintilloch".

52362 NBR Kirkliston General view, circa 1950s, showing single platform and station building.

11811 NBR Knowesgate Pregrouping view.

11812 NBR Knowesgate Pregrouping view.

52378 NBR Ladybank View from train, circa 1930s, showing main station buildings.

52379 NBR Ladybank Postcard view, circa 1912, showing "Commercial Road and railway station".

52380 NBR Lamancha General view, circa 1930s, showing platform and goods loading bank.

52381 NBR Lanark Racecourse Platform view, circa 1930s.

52382 NBR Langholm General view, circa 1930s, looking west through the train shed to the terminal buffer stops.

52383 NBR Largo View from bridge, circa 1930s, showing up and down platforms and station buildings.

52384 NBR Lasswade General view, circa 1930s, showing station building and roof of goods shed.

52416 NBR Lasswade View from bridge, circa 1950s, showing platform and station building (closed 1951).

52385 NBR Lauriston View from bridge, circa 1930s, showing up and down platforms, station buildings and goods yard.

52409 NBR Leadburn General view, circa 1930s, showing up and down platforms, station buildings, footbridge and signal cabin, looking south towards Galashiels.

52420 NBR Leadburn General view, circa 1930s, showing up and down platforms and part of station buildings, looking north towards Edinburgh.

52408 NBR Lennoxton View from bridge, circa 1930s, showing single platform and station building.

52423 NBR Lennoxton General view, circa 1930s, showing single platform, station building and road overbridge.

52406 NBR Lenzie Postcard view, circa 1912, showing up and down platforms, station buildings and footbridge, with approaching train.

52407 NBR Lenzie Detailed view, circa 1912, showing main station buildings.

52422 NBR Lenzie General view, circa 1930s, showing up and down platforms, signal cabin, station buildings and footbridge.

52421 NBR Lenzie Junction General view, circa 1930s, showing up and down platforms, station buildings, signal cabin and footbridge.

52405 NBR Leslie General view, circa 1930s, showing platform and station buildings.

52404 NBR Leuchars Junction General view, circa 1930s, showing platforms and part of station buildings.

52412 NBR Leuchars Junction General view, circa 1930s, showing platforms and station buildings.

52413 NBR Leuchars Junction General view of junction and signalling, circa 1930s.

52414 NBR Leuchars Junction Platform view, circa 1930s.

52415 NBR Leuchars Junction General view, circa 1930s, showing platforms and junction installations.

52403 NBR Leuchars Old General view from bridge, circa 1930s.

52417 NBR Leuchars Old General view, circa 1930s, showing up and down platforms and station buildings.

52401 NBR Lewiefield Halt General view, circa 1930s, showing single platform and waiting shelter.

52402 NBR Leven General view, circa 1930s, showing up and down platforms and station buildings.

52400 NBR Lindean General view, circa 1930s, showing station building and platform.

52411 NBR Lindean General view, circa 1930s, showing passenger platform and goods yard, looking towards the level crossing.

52399 NBR Lindores General view, circa 1930s, showing single platform and station building.

52397 NBR Linthithgow General view, circa 1930s, showing up and down platforms, station buildings and goods shed.

52398 NBR Linthithgow Postcard view, circa 1912, showing up and down platforms and station buildings.

52424 NBR Livingston General view, circa 1930s, showing up and down platforms, station buildings and road overbridge.

52425 NBR Livingston General view, circa 1890s, showing up and down platforms, station buildings and road overbridge.

52396 NBR Loch Leven Postcard view, circa 1912, showing up and down platforms, station buildings and footbridge.

52418 NBR Loch Leven General view, circa 1930s, showing up and down platforms, station buildings and footbridge (closed 1921).

52395 NBR Lochailort Postcard view, circa 1912, showing station from nearby hillside.

52394 NBR Lochburn View from bridge, circa 1930s, showing signal cabin.

52393 NBR Locheilside General view, circa 1912, showing platform and station building.

52419 NBR Lochielside General view, circa 1930s, showing platform and station building.

52392 NBR Lochgelly View looking east from footbridge, circa 1930s, showing up platform, main station building and goods yard.

52390 NBR Longniddry Junction General view, circa 1930s, showing platforms, station buildings and footbridge, looking south towards London.

52391 NBR Longniddry Junction General view, looking south circa 1912, showing platforms, station buildings and footbridge.

52389 NBR Longriggend View from bridge showing single platform, circa 1930s.

11828 NBR Longtown Circa 1930s view.

11829 NBR Longtown Pregrouping view.

11830 NBR Longtown Circa 1930s view.

52388 NBR Lundin Links General view, circa 1930s, showing single platform and station buildings.

52386 NBR Luthrie General view, circa 1950s, showing up and down platforms and station building, with one track removed.

52387 NBR Luthrie General view, early 1900s, showing up and down platforms, station buildings and signal cabin, with approaching train.

52438 NBR Mallaig General view, looking north circa 1906, showing 'West Highland Bogie' 4-4-0 waiting to depart.

52459 NBR Mallaig Looking south from beneath the platform canopies, circa 1900.

52460 NBR Mallaig General view, looking north during the early 1900s, with 'West Highland Bogie' 4-4-0 No.346 and an unidentified 0-6-0 in the platforms.

52439 NBR Manuel High Level General view, circa 1930s, showing up and down platforms and station buildings.

52462 NBR Manuel High Level General view, circa 1950s, showing up and down platforms and station buildings.

52440 NBR Manuel Low Level General view, circa 1950s, showing derelict platform and station building (closed 1933).

52461 NBR Manuel Low Level General view, circa 1950s, showing trackless platform.

52430 NBR Marchmont General view, circa 1930s, showing single platform and station building.

52431 NBR Markinch General view, circa 1930s, showing up and down platforms, station buildings, footbridge and overbridge.

52454 NBR Markinch General view, circa 1930s, showing up and down platforms and station buildings.

64997 NBR Markinch General view of platforms and station building looking north, 25/9/1972.

52441 NBR Maryhill View from bridge, circa 1930s, showing up and down platforms, station buildings and footbridge.

52455 NBR Maryhill View from bridge, circa 1930s, showing up and down platforms, station buildings, water tower and footbridge.

52456 NBR Maryhill View from bridge, circa 1930s, showing goods sidings.

52442 NBR Mawcarse General view, circa 1930s, showing up and down platforms, station buildings and footbridge, looking south towards Kinross.

52432 NBR Maxton General view, circa 1930s, showing up and down platforms with one track removed (double exposure).

11816 NBR Meldon Pregrouping view.

52443 NBR Menstrie General view, circa 1930s, looking east towards Alva with station building on left and goods shed visible beyond.

52433 NBR Methil General view, circa 1930s, showing LNER steam railbus alongside station building.

11815 NBR Middleton Pregrouping view.

52445 NBR Millerhill Postcard view, circa 1912, showing up and down platforms, station buildings and footbridge, with approaching train.

52446 NBR Milnathort View from bridge, circa 1930s, showing up and down platforms, station buildings and footbridge.

52447 NBR Milngavie Valentine's postcard view, circa 1912, showing station "from Public Park".

52457 NBR Milngavie View south from terminal buffer stops, circa 1930s, showing platforms and station buildings.

52458 NBR Milngavie View south from platform ends, circa 1930s, showing signalling and road overbridge.

52453 NBR Milton of Campsie General view, circa 1930s, showing up and down platforms and station buildings from beneath the road overbridge.

52448 D&A(CAL/NBR) Monifieth General view, early 1900s, showing station building.

52449 NBR Morar Postcard view, circa 1912, showing station from nearby hillside.

52450 NBR Morningside General view, circa 1930s, showing station buildings and stationary goods vehicles.

52452 NBR Morningside General view, circa 1930s, showing platform and goods sidings.

52434 NBR Mount Melville Postcard view, looking north-east circa 1912, showing platform and station building.

52435 NBR Mount Melville General view, looking east circa 1930s, showing platform and station building.

52436 NBR Mount Melville General view, looking north circa 1912, showing tripod crane in goods yard.

52437 NBR Mount Melville General view, circa 1930s, showing platform and station building from the goods yard.

52451 NBR Mount Melville Panoramic view, circa 1930s, showing passenger station and goods yard from the west.

52464 NBR Newburgh General view, circa 1930s, showing up and down platforms, station buildings and footbridge.

52472 NBR Newcastleton General view showing up and down platforms and station buildings, circa 1930s.

52476 NBR Newcastleton General view, circa 1912, showing up and down platforms, station buildings and signal cabin.

52477 NBR Newcastleton Postcard view, circa 1914, showing "entrainment of the Newcastleton Territorials".

52465 NBR Newington General view, circa 1930s, showing platform and station buildings.

52474 NBR Newtongrange Postcard view, circa 1912, showing up and down platforms and station buildings.

52466 NBR Nisbet General view showing single platform, station building and level crossing.

52470 NBR Nisbet General view, circa 1930s, showing single platform and station building.

52468 NBR North Berwick General view looking north-east towards the terminus circa 1930s.

52469 NBR North Queensferry Postcard view, circa 1912, showing up and down platforms, station buildings and footbridge, with passenger train in station.

52467 NBR North Water Bridge General view, circa 1950s, showing single platform and waiting shelter.

52479 NBR Ormiston Postcard view, circa 1912, showing station building and single platform looking east towards the road overbridge.

52480 NBR Oxtton Postcard view showing station from the level crossing, circa 1912.

52481 NBR Oxtton General view of station from nearby level crossing.



52486 NBR Partick General view, circa 1930s, showing up and down platforms, station building and adjacent print works.

52503 NBR Partick Central View from bridge, circa 1930s, saddle tank taking water.

52504 NBR Partick Central View from bridge circa 1930s, showing station building and goods shed.

52487 NBR Peacock Cross View of derelict station from bridge, circa 1930s (closed 1917).

52482 NBR Peebles General view looking south, circa 1920s, showing the north end of the single platform.

52483 NBR Peebles Platform view, looking north circa 1912, showing an arriving train hauled by NBR 4-4-0 No.487.

52484 NBR Peebles Detailed view of the station exterior, circa 1912.

52485 NBR Peebles Detailed view of Peebles Junction and signal box circa 1930s.

52488 NBR Penicuik Detailed view of station building and goods shed, looking north, circa 1900.

52489 NBR Penton View of up and down platforms, waiting shelter and signal box, circa 1925.

52492 NBR Penton General view, circa 1930s, showing up and down platforms, waiting shelter and signal cabin.

52490 NBR Philipstoun View from bridge, circa 1930s, showing up and down platforms and station buildings.

52491 NBR Pinkhill View of platform and station buildings circa 1930s.

52502 NBR Pittenweem General view from bridge, circa 1930s, showing single platform and station building.

52493 NBR Plains Circa 1930s view showing up and down platforms and station buildings.

52494 NBR Plains Detailed view of signal cabin, footbridge and level crossing, circa 1912.

52495 NBR Plashetts Postcard view, circa 1912, showing arrival of train alongside single platform.

52496 NBR Polmont Detailed view of station building, circa 1900.

52497 NBR Polton Panoramic view of station and goods yard from nearby vantage point, probably circa 1912.

52498 NBR Port Carlisle Circa 1930s view showing permanent way work, with station building in background.

52499 NBR Port of Montieth Postcard view, circa 1912, showing up and down platforms, station buildings and level crossing.

52500 NBR Portobello General view from platform end, circa 1930s.

52501 NBR Prestonpans Circa 1930s view showing up and down platforms and station buildings.

52505 NBR Pomathorn for Penicuik General view, circa 1950s, showing the single platform and station buildings.

52506 NBR Pittenween General view, circa 1930s, showing single platform, station building and goods loading bank.

52507 NBR Polmont General view, circa 1890s, showing station building and crowded platform.

11798 NBR Port Carlisle Pregrouping view.

52508 NBR Portobello View from platform end, circa 1930s, showing signalling.

52510 NBR Rannoch General view, circa 1912, showing island platform and station building looking north towards Mallaig.

52511 NBR Ratho General view, circa 1930s, showing up and down platforms, station buildings and footbridge.

52512 NBR Ratho General view, early 1900s, showing up and down platforms, station buildings and footbridge.

52513 NBR Ratho View of low level branch platform (closed 1930).

11806 NBR Reedsmouth Pregrouping view.

11807 NBR Reedsmouth Pregrouping view.

11808 NBR Reedsmouth Circa 1930s view.

52516 D&B(NBR/CAL) Renton General view, circa 1930s, showing up and down platforms, station buildings and footbridge, looking south towards Glasgow.

52514 NBR Reston Postcard view, early 1900s, showing up and down platforms, station buildings and footbridge.

52515 NBR Reston Panoramic view, circa 1930s, showing station in distance.

52518 NBR Reston General view, circa 1930s, showing up and down platforms and station buildings.

52519 NBR Rhu (Row) General view, circa 1950s, showing up and down platforms and station buildings, with one track removed.

52520 NBR Rhu (Row) General view, circa 1930s, showing up and down platforms and station buildings, with one track removed.

52531 NBR Rhu (Row) General view, early 1900s, showing up and down platforms, signal cabin and footbridge.

52521 NBR Riccarton Junction Postcard view, circa 1912.

52522 NBR Riccarton Junction Postcard view, circa 1912, showing veteran NBR locomotive on passenger working, with station buildings in background.

52523 NBR Riccarton Junction Postcard view, circa 1912, showing station from nearby hillside.

52517 NBR Roslin General view, circa 1930s, showing single platform and station building.

52524 NBR Rosslyn Castle View from bridge, circa 1930s, showing platform and station building.

52525 NBR Rosslyn Castle Platform view, circa 1930s, looking towards road bridge.

52540 NBR Rosslyn Castle View from bridge, circa 1930s, showing station building.

52532 NBR Rosslylee General view, circa 1930s, showing the single platform and station building.

52526 NBR Rothbury Postcard view, circa 1912, looking south-west towards Scotsgap, with the single platform and station building on the left.

11825 NBR Rothbury Pregrouping view.

11826 NBR Rothbury Pregrouping view.

52527 NBR Rosyth Halt General view, looking north circa 1917, showing up and down platforms, signal cabin and overbridge.

52528 NBR Roxburgh View from footbridge, circa 1930s, showing up and down platforms and station buildings.

52529 NBR Roxburgh General view, circa 1930s, showing up and down platforms, station buildings and footbridge.

52530 NBR Roy Bridge View from footbridge, circa 1930s, showing up and platforms, station buildings and signal cabin.

52541 NBR Roy Bridge Postcard view, circa 1912, showing up and down platforms, station buildings and footbridge.

52534 NBR Rumbling Bridge General view showing up and down platforms and station buildings, circa 1930s.

52535 NBR Rumbling Bridge View of goods yard, circa 1912.

52536 NBR Rumbling Bridge General view, circa 1930s, showing up and down platforms and station buildings.

52537 NBR Rumbling Bridge General view, circa 1950s, showing up and down platforms and station buildings.

52538 NBR Rumbling Bridge General view, early 1900s, showing station buildings, signal cabin and goods yard.

52533 NBR Rutherford General view, circa 1930s, showing passenger platform and goods loading bank.

52549 NBR St Andrews (Old) General view, circa 1930s.

52550 NBR St Andrews View from bridge, circa 1930s.

52565 NBR St Andrews Platform view, circa 1920s, showing station buildings.

52554 NBR St Andrews Postcard view, circa 1912, showing platform and station buildings from bridge.

52558 NBR St Andrews View from platform end, circa 1930s.

52548 NBR St Boswells Ex-GER 'F6' class 2-4-2T No.8301 standing in the station with a local freight working.

52556 NBR St Boswells General view, circa 1930s, showing up and down platforms, station buildings and footbridge.

52557 NBR St Boswells General view, circa 1920s, showing up and down platforms and footbridge.

52552 NBR St Clairtown General view, circa 1900, showing up and down platforms, station buildings and overbridge.

52547 NBR St Cyrus Platform view, circa 1930s, showing station building and road overbridge.

52553 NBR St Fort General view, circa 1930s, showing up and down platforms, station buildings and footbridge.

52555 NBR St Fort General view, circa 1930s, showing up and down platforms and station buildings framed by footbridge.

52559 NBR St Monance General view, circa 1930s, showing up and down platforms and station buildings.

52560 NBR St Monance General view, circa 1930s, showing up and down platforms, station buildings and overbridge.

52561 NBR St Monance Postcard view, circa 1912.

52551 NBR St Morans View from footbridge, circa 1930s, showing up and platforms, station buildings and train.

52546 NBR Saltoun Postcard view, circa 1912, showing branch train entering the station behind Drummond 'D51' 4-4-0T No.77.

52562 NBR Saughtree General view, circa 1930s, showing station building and single platform, with line of open wagons on adjacent siding.

52563 NBR Saughtree Circa 1930s view, showing part of station building.

52567 NBR Scotchdyke General view, circa 1930s, showing up and down platforms.

52568 NBR Scotchdyke General view, circa 1930s, showing up and down platforms, waiting shelter and distant view of signal cabin.

11813 NBR Scotsgap Junction Pregrouping view.

11814 NBR Scotsgap Junction Pregrouping view.

52564 NBR Scotstounhill General view, circa 1912, showing up and down platforms, station buildings and footbridge.

52569 NBR Scotstounhill General view, circa 1930s, showing up and down platforms, station buildings and footbridge.

52566 NBR Scotstounhill Postcard view, circa 1912, showing up and down platforms, station buildings and footbridge.

52571 NBR Shandon General view, circa 1930s, showing platform and station building.

52570 NBR Shankend General view, circa 1930s, showing up and down platforms and station buildings.

52572 NBR Shankend General view, circa 1930s, showing island platform and station building.

52573 NBR Shandon Postcard view, circa 1912, showing island platform and station building.

52574 NBR Shettleston Postcard view, circa 1912, showing view from platforms.

52575 NBR Shettleston General view, circa 1912, showing up and down platforms, station buildings and footbridge.

52576 NBR Shettleston Postcard view, circa 1912s, showing up and down platforms, station buildings and footbridge.

52577 NBR Shettleston General view, circa 1930s, showing up and down platforms, station buildings and goods shed.

52578 NBR Shettleston View from platform ends, circa 1930s, showing overbridge and signalling.

11793 NBR Silloth Pregrouping view.  
 11794 NBR Silloth Pregrouping view.  
 52581 NBR Sinclairtown Detailed view of station building, circa 1930s.  
 52583 NBR Sinclairtown General view, circa 1930s, showing up and down platforms and station buildings, looking towards road overbridge.  
 52582 NBR Singer Postcard view, circa 1912, showing up and down platforms, station buildings and footbridge.  
 52602 NBR Singer Postcard view, circa 1912, showing up and down platforms, station buildings and approaching train.  
 52579 NBR Singer General view, circa 1930s, showing up and down platforms, station buildings and goods shed.  
 52580 NBR Singer Postcard view, circa 1912, showing up and down platforms, station buildings and footbridge.  
 52584 NBR Slamannan General view, circa 1930s, showing single platform, station building and goods shed.  
 52585 NBR Slamannan Postcard view, circa 1912, showing single platform, station building and level crossing.  
 52587 NBR Slamannan Postcard view, circa 1912, showing single platform, station building and level crossing.  
 52586 NBR Slateford General view, circa 1930s, showing up and down platforms, station buildings and footbridge.  
 52588 NBR South Queensferry Postcard view, circa 1912, showing street level entrance.  
 52589 NBR South Queensferry Halt Postcard view, circa 1912.  
 52590 NBR South Queensferry Halt General view, circa 1930s, showing single platform.  
 52591 NBR Spean Bridge Postcard view, circa 1912, showing up and down platforms, station buildings and signal cabin.  
 52592 NBR Spean Bridge General view, circa 1930s, showing up and down platforms and station buildings.  
 52593 NBR Spean Bridge View from bridge, circa 1930s.  
 52594 NBR Springburn General view, circa 1930s, showing platforms and station buildings.  
 52595 NBR Springburn View from bridge, circa 1930s, showing platforms and island station building.  
 52599 NBR Stanely General view, circa 1930s, showing island platform and station building.  
 52597 NBR Steele Road General view, circa 1930s, showing up and down platforms, station buildings and signal cabin.  
 52596 NBR Stow View from bridge, circa 1930s, showing up and down platforms, station buildings and footbridge.  
 52598 NBR Strathblane General view, circa 1930s, showing single platform, station building and goods yard.  
 52600 NBR Strathmiglo General view, circa 1930s, showing platform and station building.  
 52601 NBR Strathvithie General view, circa 1950s, showing up and down platforms and station buildings, with one track removed.

11817 NBR Tarsset Pregrouping view.  
 52620 NBR Tay Bridge View of bridge, circa 1930s.  
 52604 NBR Tayport General view, circa 1930s, showing up and down platforms and station buildings.  
 52618 NBR Tayport Postcard view, circa 1912, showing arrival of local passenger train behind NBR 4-4-0T.  
 52619 NBR Tayport General view, circa 1930s, showing up and down platforms framed by footbridge.  
 52605 NBR Thornielee General view, circa 1950s, showing the station building and single platform.  
 52616 NBR Thornliebbank General view, circa 1930s, showing up and down platforms, station buildings and footbridge.

52606 NBR Thornton Junction View from train, circa 1935, showing island platform.

52607 NBR Thornton Junction General view, circa 1912, showing platforms and footbridge.

52608 NBR Tillicoultry General view, circa 1930s, showing up and down platforms, station buildings and footbridge.

52609 NBR Torrance General view, circa 1930s, showing platforms, station building and signal cabin.

52614 NBR Torrance General view, circa 1930s, showing single platform, station building and goods yard.

52615 NBR Torrance Postcard view by "McDougall, Torrance", showing single platform and station building, looking towards the road overbridge circa 1912.

52610 NBR Torryburn General view, circa 1930s, showing platform and station building.

52611 NBR Tulloch General view, circa 1930s, showing up and down platforms, station buildings and footbridge, looking south towards Glasgow.

52612 NBR Twechar View from bridge, circa 1930s, showing platform and station building.

52613 NBR Tynehead Detail view from embankment, circa 1930s, looking down on waiting room.

52617 NBR Twechar General view, circa 1930s, showing single platform and station building.

52626 NBR Uphall General view, circa 1930s, showing up and down platforms, station buildings and footbridge.

52627 NBR Uphall Postcard view by "R.Braid", circa 1920s, showing up and down platforms, station buildings and footbridge.

52625 NBR Upper Bathgate Postcard view, circa 1912, showing up and down platforms, station buildings and footbridge.

52628 NBR Walkerburn General view, circa 1930s, showing the station building and single platform, looking towards the level crossing.

52629 NBR Walkerburn West General view, circa 1900, showing goods yard.

52630 NBR Walkerburn Postcard view, circa 1912, showing single platform, station building and goods yard, looking towards the level crossing.

11799 NBR Wall Pregrouping view.

11805 NBR Wark Pregrouping view.

52640 NBR Wemyss Castle General view, circa 1930s, showing station building and good shed.

52652 NBR Wemyss Castle Detailed view of station building, early 1900s.

52634 D&A(NBR/CAL) West Ferry General view, circa 1930s, showing up and down platforms, station buildings and footbridge.

52635 D&A(CAL/NBR) West Ferry Detailed view of waiting shelter, circa 1930s.

52639 NBR West Newport General view, circa 1930s, showing platform and station building.

52636 NBR Westcraigs General view, early 1900s, showing up and down platforms, station buildings and footbridge, with approaching train.

52642 NBR West Wemyss Panoramic view of passenger station, signal cabin and goods yard circa 1930s.

52637 NBR Westcraigs View from overbridge, circa 1930s, showing goods yard and NBR 0-6-0.

52638 NBR Westcraigs General view, circa 1930s, showing up and down platforms, station buildings and footbridge.

52631 NBR Westerton View from footbridge, circa 1930s.

52632 NBR Westerton General view, circa 1930s, showing up and down platforms and footbridge.

52633 NBR Westfield General view, circa 1930s, showing single platform and station buildings.

52643 NBR Whifflet View from footbridge, circa 1930s, showing signal cabin.

52644 NBR Whifflet View from footbridge, circa 1930s, showing approaching steam railcar.

52645 NBR Whifflet General view, circa 1930s.

52646 NBR Whitburn General view, circa 1930s, showing station building and signal cabin.

52647 NBR Whitburn General view, early 1900s, showing station building and road overbridge.  
52648 NBR Whistlefield General view, circa 1930s, showing single platform and station building.  
52650 NBR Whistlefield Postcard view, circa 1912, showing Loch Long and Loch Goil, with station in the middle distance.  
52649 NBR Whiteinch Victoria Park General view, circa 1930s, showing station building.  
52651 NBR Whiteinch Victoria Road General view, circa 1930s, showing island platform and station buildings.  
11809 NBR Woodburn Circa 1930s view.  
11810 NBR Woodburn Circa 1930s view.  
52641 NBR Wormit Postcard view by "Rapid Photo", circa 1912, showing station and Tay Bridge.  
52653 NBR Wormit General view, circa 1960s, showing up and down platforms and station buildings